

**APA009Hu01 1**

**Active Angiotensin 2 (ANGPT2)**

**Organism Species: *Homo sapiens (Human)***

***Instruction manual***

FOR RESEARCH USE ONLY

NOT FOR USE IN CLINICAL DIAGNOSTIC PROCEDURES

---

12th Edition (Revised in Aug, 2016)

**[ PROPERTIES ]**

**Source:** Prokaryotic expression

**Host:** n/a

**Residues:** Lys24~Leu165

**Tags:** N-terminal His Tag

**Purity:** > 95%

**Buffer formulation:** 20mM Tris, 150mM NaCl, pH8.0, containing 1mM EDTA, 1mM DTT, 0.01% SKL, 5% Trehalose and Proclin300.

**Applications:** Cell culture; Activity Assays.

(May be suitable for use in other assays to be determined by the end user.)

**Predicted isoelectric point:** 5.4

**Predicted Molecular Mass:** 17.6kDa

**Accurate Molecular Mass:** 18kDa as determined by SDS-PAGE reducing conditions.

**[ USAGE ]**

Reconstitute in 20mM Tris, 150mM NaCl (pH8.0) to a concentration of 0.1-1.0 mg/mL. Do not vortex.

**[ STORAGE AND STABILITY ]**

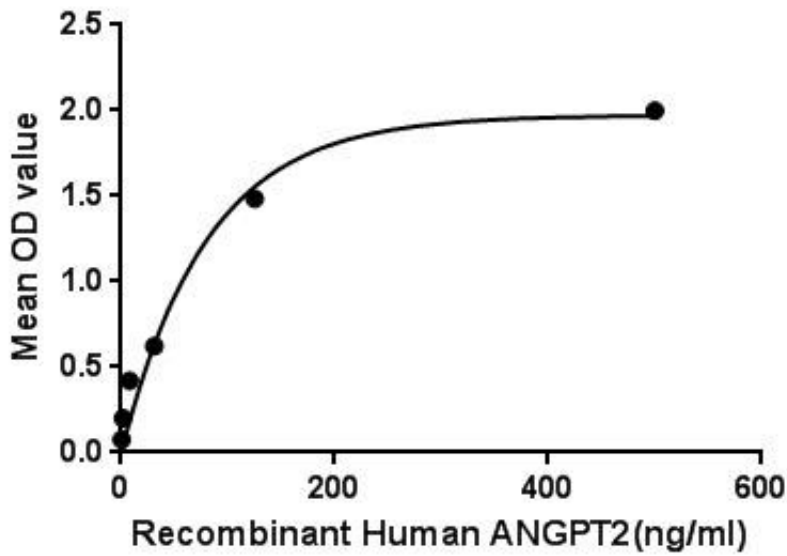
**Storage:** Avoid repeated freeze/thaw cycles.

Store at 2-8°C for one month.

Aliquot and store at -80°C for 12 months.

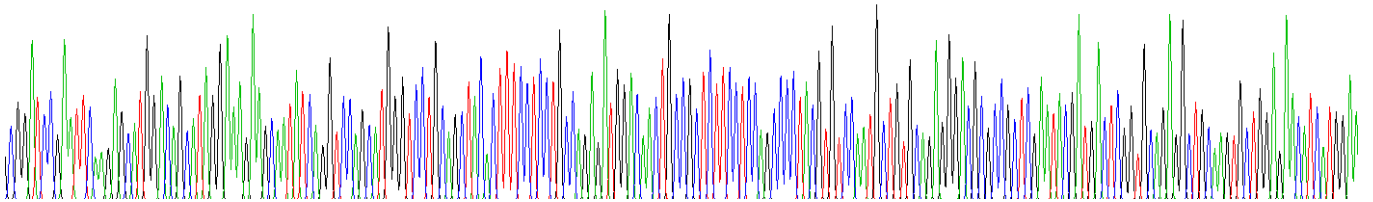
**Stability Test:** The thermal stability is described by the loss rate. The loss rate was determined by accelerated thermal degradation test, that is, incubate the protein at 37°C for 48h, and no obvious degradation and precipitation were observed. The loss rate is less than 5% within the expiration date under appropriate storage condition.

**[ SEQUENCE ]**



**[ IDENTIFICATION ]**

ATGGATCCGAAATTCAGAGCATGGACGATAGGAAAGAGCAATATCAGGTCGACATGGGTCCTGAGCTACACTTCTCTCTGCGAGAGATGGACACTGCGCTCTTCTCTCGAGCCCTAGGTGTCGATGCTGTGCGAGAGGGACCGCGCTCGAATAGCATGACTGGTGGAGAGGCTTCCAGTCTGGAGACATCATGGAA



**Figure . Gene Sequencing (extract)**

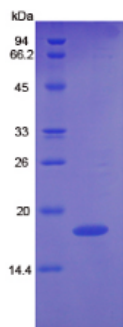


Figure. SDS-PAGE

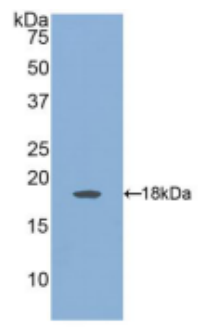


Figure. Western Blot

**[ IMPORTANT NOTE ]**

The kit is designed for research use only, we will not be responsible for any issue if the kit was used in clinical diagnostic or any other procedures.