

**APA308Ra01 100µg**

**Active Galectin 8 (GAL8)**

**Organism Species: *Rattus norvegicus* (Rat)**

***Instruction manual***

FOR RESEARCH USE ONLY

NOT FOR USE IN CLINICAL DIAGNOSTIC PROCEDURES

---

---

1st Edition (Apr, 2016)

## **[ PROPERTIES ]**

**Source:** Prokaryotic expression.

**Host:** *E. coli*

**Residues:** Arg151~Trp316

**Tags:** N-terminal His-tag

**Purity:** >95%

**Endotoxin Level:** <1.0EU per 1µg (determined by the LAL method).

**Buffer Formulation:** 20mM Tris, 150mM NaCl, pH8.0, containing 0.05% sarcosyl and 5% trehalose.

**Applications:** Cell culture; Activity Assays.

(May be suitable for use in other assays to be determined by the end user.)

**Predicted isoelectric point:** 7.6

**Predicted Molecular Mass:** 22.4kDa

**Accurate Molecular Mass:** 22kDa as determined by SDS-PAGE reducing conditions.

## **[ USAGE ]**

Reconstitute in 20mM Tris, 150mM NaCl (pH8.0) to a concentration of 0.1-1.0 mg/mL. Do not vortex.

## **[ STORAGE AND STABILITY ]**

**Storage:** Avoid repeated freeze/thaw cycles.

Store at 2-8°C for one month.

Aliquot and store at -80°C for 12 months.

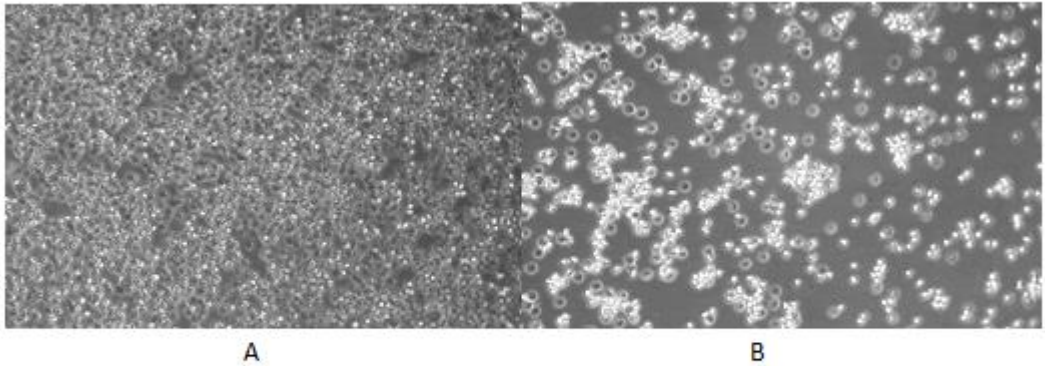
**Stability Test:** The thermal stability is described by the loss rate. The loss rate was determined by accelerated thermal degradation test, that is, incubate the protein at 37°C for 48h, and no obvious degradation and precipitation were observed. The loss rate is less than 5% within the expiration date under appropriate storage condition.

## **[ SEQUENCE ]**

```
RFSSDLQSME TSTLGLTQIS KENIQKSGKL HLSPFEARL NASMGPGRTV  
VVKGEVNTNA TSFNVDLVAG RSRDIALHLN PRLNVKAFVR NSFLQDAWGE  
EERNITCFPF SSGMYFEMII YCDVREFKVA VNGVHSLEYK HRFKDLSSID  
TLAVDGDIRL LDVRSW
```

## **[ ACTIVITY ]**

Galectin 8 (GAL8), also known as prostate carcinoma tumor antigen 1 (PCTA1) in human, is a tandem repeat-type galectin. is a member of the lectin family, of which 14 mammalian galectins have been identified. It is also a member of the beta-galactoside-binding protein family that plays an important role in cell-cell adhesion, cell-matrix interactions, macrophage activation, angiogenesis, metastasis, apoptosis. In this case, we chose rabbit erythrocyte (RaE) to assay its ability of agglutination. A general procedure for hemagglutination assay (or haemagglutination assay; HA) is as follows, two-fold dilute the recombinant Rat GAL8 with 0.9% sodium chloride injection, add 50µL a serial dilution of GAL8 to each well of a U or V-bottom shaped 96-well microtiter plate. The final well serves as a negative control with no GAL8, replace with 50µL 0.9% sodium chloride injection. Then add 50µL 1% rabbit erythrocyte to each well and mixed gently. The plate is incubated for 3 hours at room temperature. The results are shown in Figure 1. It was obvious that the minimal effective concentration of GAL8 is 1.5625 µg/mL.



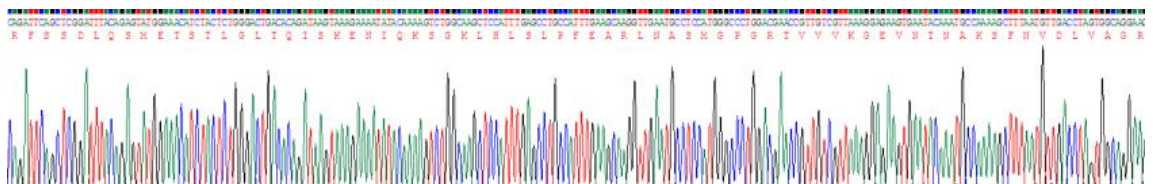
**Figure 1. The hemagglutination of recombinant Rat GAL8**

- (A) Rabbit erythrocyte reacted with no GAL8 for 3h;
- (B) Rabbit erythrocyte reacted with 50ug/ml GAL8 for 3h.

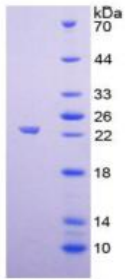


**Figure 2. The hemagglutination assay of GAL8 in V- bottom shaped 96-well microtiter plate.**

**[ IDENTIFICATION ]**

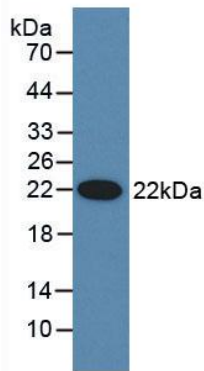


**Figure 3. Gene Sequencing (extract)**



**Figure 4. SDS-PAGE**

**Sample: Active recombinant GAL8, Rat**



**Figure 5. Western Blot**

**Sample: Recombinant GAL8, Rat;**

**Antibody: Rabbit Anti- Rat GAL8 Ab (PAA308Ra01)**

### **[ IMPORTANT NOTE ]**

The kit is designed for research use only, we will not be responsible for any issue if the kit was used in clinical diagnostic or any other procedures.