



CAB340Mi22

Anti-Beta Actin (ACTB) Monoclonal Antibody

Organism Species: Multiple species

Instruction manual

FOR RESEARCH USE ONLY

3rd Edition (Revised in Sep, 2019)

[PROPERTIES]

Host: Mouse

Antibody isotype: IgG2b Kappa

Purification: Protein A/G Affinity Chromatography

Clone number: B3D5

Traits: Liquid

Concentration: 1mg/mL

Species reactivity: Human, Mouse, Rat, Guinea pig, Porcine, Bovine, Canine, Caprine, Ovine, Gallus, Equine

UOM: 100µl

Applications: Loading Control of WB

[IMMUNOGEN]

Immunogen: Recombinant ACTb (Met1~Phe375) expressed in *E.coli*.

Accession No.: RPB340Hu01

[APPLICATIONS]

Western blotting: 1/10000-1/10000000 (0.1ng/ml-100ng/ml)

Optimal working dilutions must be determined by end user.

[FORMULATION]

Form & Buffer: Supplied as solution form in 0.01M PBS, pH7.4, containing 0.05% Proclin-300, 50% glycerol.

[STORAGE AND STABILITY]

Storage: Avoid repeated freeze/thaw cycles.

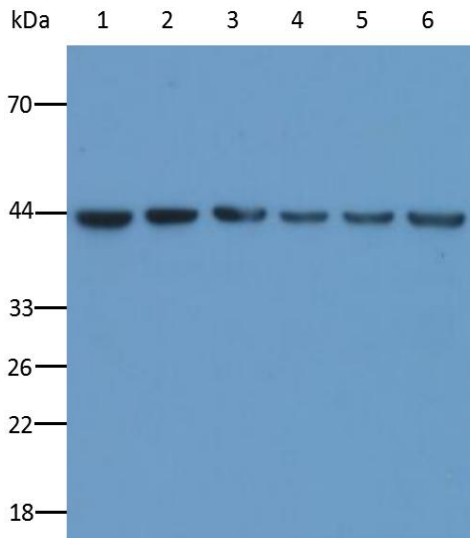
Store at 4°C for frequent use.

Aliquot and store at -20°C for 24 months.

Stability Test: The thermal stability is described by the loss rate. The loss rate was determined by accelerated thermal degradation test, that is, incubate the antibody at 37°C for 48h, and no obvious degradation and precipitation were observed. The loss rate is less than 5% within the expiration date under

appropriate storage condition.

[IDENTIFICATION]



Western Blot analysis of ACTb in various cell lines

- Lane1: DU145 whole cell lysate
- Lane2: HL60 whole cell lysate
- Lane3: THP-1 whole cell lysate
- Lane4: OS-RC-2 whole cell lysate
- Lane5: MDA-MB-435S whole cell lysate
- Lane6: T-47D whole cell lysate

Lysates/proteins at 20µg per lane.

Primary Ab: anti-ACTb antibody (CAB340Mi22) at 0.1ng/ml

Secondary Ab: HRP-conjugated Rabbit anti-mouse antibody (SAA544Mu09) at 1/10000 dilution

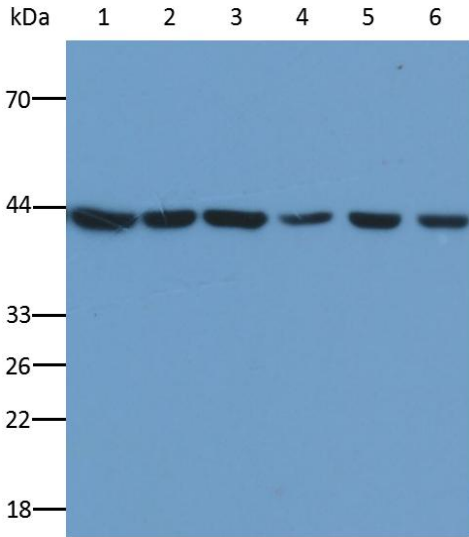
Developed using the ECL technique.

Calculated MW: 42KD

Observed MW: 42KD

Exposure time: 1 min

Western Blot analysis of ACTb in various tissues of different species



Lane1: Rat brain, whole tissue lysate
Lane2: Rabbit, brainstem, whole tissue lysate
Lane3: Bovine kidney, whole tissue lysate
Lane4: Porcine liver, whole tissue lysate
Lane5: Caprine cerebellum, whole tissue lysate
Lane6: Canine spinal cord, whole tissue lysate

Lysates/proteins at 20 μ g per lane.

Primary Ab: anti-ACTb antibody (CAB340Mi22) at 0.3ng/ml

Secondary Ab: HRP-conjugated Rabbit anti-mouse antibody (SAA544Mu09) at 1/10000 dilution

Developed using the ECL technique

Calculated MW: 42KD

Observed MW: 42KD

Exposure time: 1 min