

**CAF548Hu01**

**Anti-Lamin B1 (LMNB1) Polyclonal Antibody**

**Organism Species: Homo sapiens (Human)**

***Instruction manual***

FOR IN VITRO USE AND RESEARCH USE ONLY

NOT FOR USE IN CLINICAL DIAGNOSTIC PROCEDURES

---

---

11th Edition (Revised in May, 2016)

## **[ PROPERTIES ]**

**Source:** Polyclonal antibody preparation

**Host:** Rabbit

**Purification:** Antigen-specific Affinity Chromatography

**Traits:** Liquid

**Concentration:** 200µg/mL

**UOM:** 100µg

**Applications:** WB

## **[ IMMUNOGEN ]**

**Immunogen:** RPF548Hu01-Recombinant Lamin B1 (LMNB1)

## **[ ORGANISM SPECIES MORE ]**

**React with:** Human, mouse, porcine;

Other species have not been detected.

## **[ APPLICATIONS ]**

Western blotting: 0.5-2ug/ml

Optimal working dilutions must be determined by end user.

## **[ FORMULATION ]**

**Form & Buffer:** Supplied as solution form in PBS, pH7.4, containing 0.02% NaN<sub>3</sub>, 50% glycerol.

## [ QUALITY CONTROL ]

**Content:** The quality control contains recombinant LMNB1 disposed in loading buffer.

**Usage:** 10uL per well when 3,3'-Diaminobenzidine(DAB) as the substrate.  
5uL per well when used in enhanced chemiluminescent (ECL).

**Note:** The quality control is specifically manufactured as the positive control. Not used for other purposes.

**Loading Buffer:** 100mM Tris(pH6.8), 1% SDS, 150mM NaCl, 50% glycerol, 0.02% BPB, 50mM DTT and 0.02% NaN<sub>3</sub>.

## [ STORAGE AND STABILITY ]

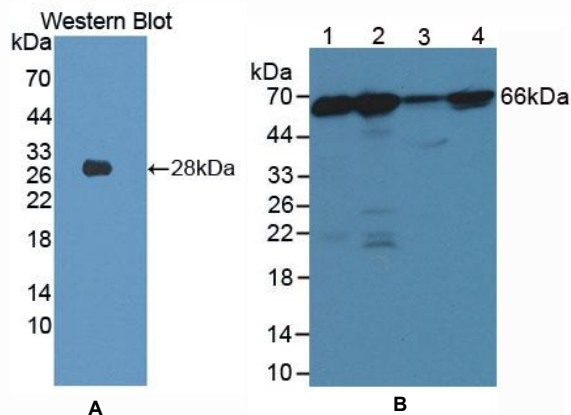
**Storage:** Avoid repeated freeze/thaw cycles.

Store at 4°C for frequent use.

Aliquot and store at -20°C for 12 months.

**Stability Test:** The thermal stability is described by the loss rate. The loss rate was determined by accelerated thermal degradation test, that is, incubate the protein at 37°C for 48h, and no obvious degradation and precipitation were observed. The loss rate is less than 5% within the expiration date under appropriate storage condition.

## [ IDENTIFICATION ]



**Figure 1. Western Blot**

**A. Sample: Recombinant LMNB1, Human**

**B. Lane1: Human HeLa Tissue**

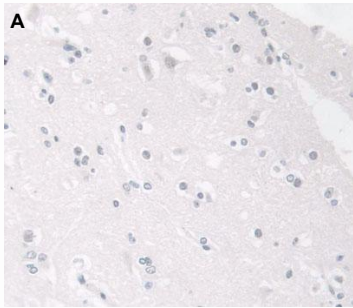
**Lane2: Human Lung Tissue**

**Lane3: Porcine Brain Tissue**

**Lane4: Porcine Kidney Tissue**

**Primary Ab: 2μg/mL Rabbit Anti-Human LMNB1 Ab**

**Second Ab: 1:2000 Dilution of HRP-Linked Guinea pig Anti-Rabbit Ab (Catalog: SAA544Rb59)**



**Figure 2. DAB staining on IHC-P**

**Samples:**

**A. Human Brain Tissue**