



CAB870Hu22

Anti-Tubulin Beta (TUBb) Monoclonal Antibody

Organism Species: Homo sapiens (Human)

Instruction manual

FOR IN VITRO USE AND RESEARCH USE ONLY
NOT FOR USE IN CLINICAL DIAGNOSTIC PROCEDURES

13th Edition (Revised in Aug, 2023)

[PROPERTIES]

Source: Monoclonal antibody preparation

Host: Mouse

Antibody isotype: IgG2b Kappa

Purification: Protein A+G Affinity Chromatography.

Clone number: C3

Traits: Liquid

Concentration: 1mg/mL

UOM: 100µL

Applications: Loading Control of WB;IHC;IF

[IMMUNOGEN]

Immunogen: Recombinant TUBb (Val170~Val419) expressed in *E.coli*.

Accession No.: RPB870Hu01

[ORGANISM SPECIES MORE]

React with: Human, mouse, rat, bovine, porcine;

Other species have not been detected.

[APPLICATIONS]

Western blotting: 0.5-2µg/mL

Immunohistochemistry: 5-20µg/mL

Immunofluorescence:5-40µg/mL

Optimal working dilutions must be determined by end user.

[FORMULATION]

Form & Buffer: Supplied as solution form in 0.01M PBS, pH7.4, containing 0.05% Proclin-300, 50% glycerol.

[STORAGE AND STABILITY]

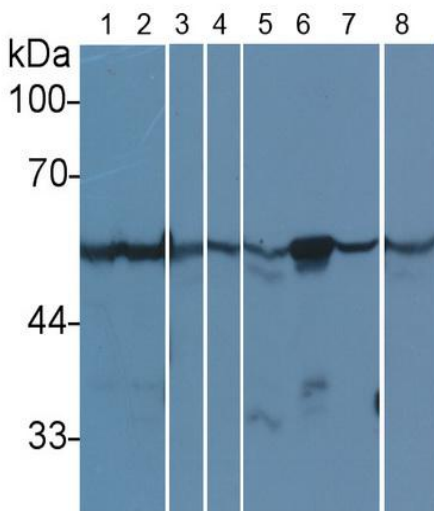
Storage: Avoid repeated freeze/thaw cycles.

Store at 4°C for frequent use.

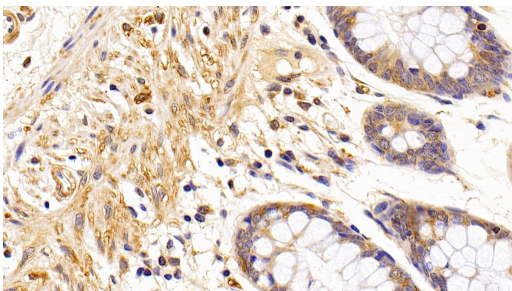
Aliquot and store at -20°C for 24 months.

Stability Test: The thermal stability is described by the loss rate. The loss rate was determined by accelerated thermal degradation test, that is, incubate the protein at 37°C for 48h, and no obvious degradation and precipitation were observed. The loss rate is less than 5% within the expiration date under appropriate storage condition.

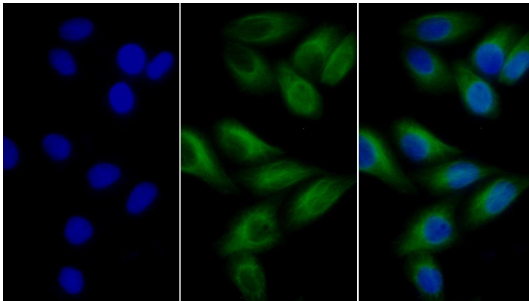
[IDENTIFICATION]



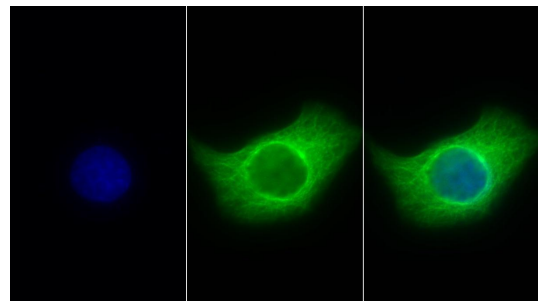
Western Blot Sample: Lane1: HeLa cell lysate; Lane2: HepG2 cell lysate; Lane3: Cavia Kidney lysate; Lane4: Canine Kidney lysate; Lane5: Gallus Kidney lysate; Lane6: Bovine Cerebrum lysate; Lane7: Bovine Kidney lysate; Lane8: Caprine Kidney lysate;
Primary Ab: 1 μ g/ml Mouse Anti-Human TUBb Antibody
Second Ab: 0.2 μ g/mL HRP-Linked Rabbit Anti-Mouse IgG Polyclonal Antibody (Catalog: SAA544Mu19)



DAB staining on IHC-P;
Samples: Human Stomach Tissue;
Primary Ab: 10 μ g/ml Mouse Anti-Human TUBb Antibody
Second Ab: 2 μ g/mL HRP-Linked Caprine Anti-Mouse IgG Polyclonal Antibody (Catalog: SAA544Mu19)



FITC staining on IF;
Samples: Human MCF7 cell;
Primary Ab: 40 μ g/ml Mouse Anti-Human
TUBb Antibody
Second Ab: 1 μ g/ml FITC-Linked Caprine
Anti-Mouse IgG Polyclonal Antibody
(Catalog: SAA544Mu18)



FITC staining on IF;
Sample: Human HeLa cell;
Primary Ab: 30 μ g/ml Mouse Anti-Human
TUBb Antibody
Second Ab: 2 μ g/ml FITC-Linked Caprine
Anti-Mouse IgG Polyclonal Antibody
(Catalog: SAA544Mu18)

[Important Note]

The kit is designed for in vitro and research use only, we will not be responsible for any issue if the kit was used in clinical diagnostic or any other procedures.