

Product Datasheet

Human MCP1 Matched Antibody Pair Kit PSA087Hu01 (96T x 5)

[Products overview]

Matched Antibody Pair Kit is composed of unlabeled capture antibody, Biotinylated detection antibody and a calibrated protein standard. The Matched Antibody Pair Kit can potentially be used for quantifying natural and recombinant human Monocyte Chemotactic Protein 1 (MCP1) in ELISA, CLIA, ELISPOT, Luminex, Immunochromatography and other immunoassays. The Standard in the kit is recombinant MCP1 . Both capture and detection antibody are mouse monoclonal antibodies.

[Components And Properties]

| Components | Quantity | Form |
|--|----------------|--|
| Standard | 20ng | Lyophilized, 1 vial |
| Capture Antibody | 110µg / 0.06mL | Liquid, 1 vial, contains 0.1% sodium azide |
| Biotinylated Detection Antibody | 20µg / 0.087mL | Liquid, 1 vial, contains 0.1% sodium azide |

Notes: The kit contains raw materials for approximately 96 Tests x 10 plates. However, individual results may vary depending on the researcher's assay protocol and other variables.

[Recommended Buffers and Solutions]

Cloud-Clone's product of Assay Kit Antibody Pairs Support Pack 1 (Cat # IS077), which includes Coating Buffer, Blocking Buffer, Standard Diluent, Detection Antibody Diluent, Streptavidin-HRP Diluent, Wash Buffer, Streptavidin-HRP, Substrate Solution, Stop Solution is highly recommended for reagent preparation.

[Recommended Range / Dilution]

Standard: Reconstitute the Standard with 1.0mL of Standard Diluent (Cat # IS077). The recommended Range of Standard curve is 31.2-2,000pg/mL.

Capture Antibody: Dilute 1000 times with Coating Buffer (Cat # IS077). For example, to make enough for 1 plate, add 10uL capture antibody to 9.99mL Coating Buffer.

Biotinylated Detection Antibody: Dilute 690 times with Detection Antibody Diluent (Cat # IS077). For example, to make enough for 1 plate, add 15uL Biotinylated Detection Antibody to 10.335mL Antibody Dilution Buffer.

Notes: The recommended Cloud-Clone's products of diluents and buffers are validated in the lab, other reagents selected for use can alter the performance of an immunoassay.

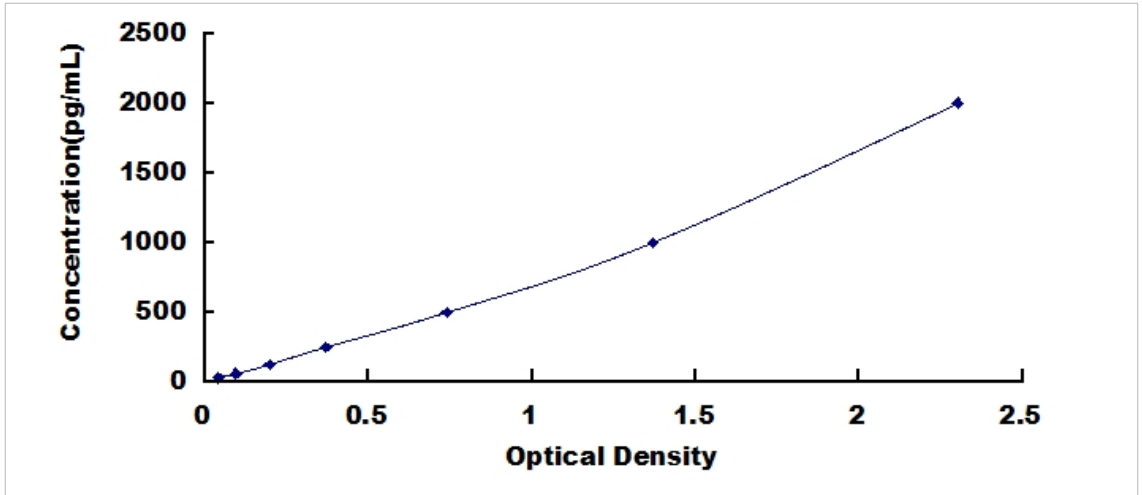
[Storage]

Avoid repeated freeze/thaw cycles. Store at 2-8°C for one month. Aliquot and store at -20°C for 12 months. Please make all solutions fresh before the experiment.

Notes: Please avoid contamination.

[Typical Data]

Typical standard curve below is provided for reference only. A standard curve should be generated for each experiment.



[Recommended Assay Protocol]

1. Dilute the Capture Antibody to working concentration in Coating Buffer. Immediately coat the 96-well microplates with 100 μ L per well of the diluted Capture Antibody. Seal the plate and incubate overnight at 4°C or incubate at 37°C for 2 hours.
2. Aspirate wells and wash with 350 μ L of Wash Buffer (Cat # IS077) per well, and let it sit for 1~2 minutes. Remove the remaining liquid by inverting and tapping the plate on absorbent paper.
3. Block plate with 200 μ L per well of Blocking Buffer (Cat # IS077) for 1.5 hours at 37°C.
4. Repeat the aspiration/wash process as in Step 2.
5. Add 100 μ L of different concentration of standards, samples into the appropriate wells. Cover with the Plate sealer. Incubate for 1 hour at 37°C.
6. Repeat the aspiration/wash process as in Step 2.

7. Add 100 μ L of the working Biotinylated Detection Antibody working solution to each well, cover the wells, and incubate for 1 hour at 37°C.
8. Repeat the aspiration/wash process for 3 times as in Step 2.
9. Add 100 μ L of the working solution of Streptavidin-HRP (Cat # IS077) to each well, cover the wells, and incubate for 30 minutes at 37°C.
10. Repeat the aspiration/wash process for total 5 times as in Step 2.
11. Add 90 μ L of Substrate Solution (Cat # IS077) to each well. Cover the wells, and incubate for 10-20 minutes at 37°C. Protect from light.
12. Add 50 μ L of Stop Solution (Cat # IS077) to each well. Mix the liquid by tapping the side of the plate.
13. Run the microplate reader and conduct measurement at 450nm immediately.