

PAB433Mu01**Polyclonal Antibody to Enolase, Muscle Specific (MSE)****Organism Species: Mus musculus (Mouse)****Instruction manual**

FOR IN VITRO USE AND RESEARCH USE ONLY

NOT FOR USE IN CLINICAL DIAGNOSTIC PROCEDURES

9th Edition (Revised in Jul, 2013)

[PRODUCT INFORMATION]**Immunogen:** MSE, Mouse**Clonality:** Polyclonal**Host:** Rabbit**Immunoglobulin Type:** IgG**Purification:** Affinity Chromatography.**Applications:** WB, ICC, IHC-P, IHC-F, ELISA**Concentration:** 200µg/mL**UOM:** 100µg**[IMMUNOGEN INFORMATION]****Immunogen:** Recombinant MSE (Met3~Lys434) expressed in *E.coli*.**USCN Accession No.:** RPB433Mu01**Sequence:** The target protein is fused with N-terminal His-Tag and its sequence is listed below.

MGHHHHHSGS-MQKIFARE ILDSRGNPTV EVDLHTAKGR FRAAVPSGAS TGIYEALRLR
DGDKARYLGK GVLKAVEHIN KTLGPALLEK KLSVVDQEKV DKFMIELDGT ENKSKFGANA
ILGVSLAVCK AGAAEKGVPL YRHIADLAGN PDLVLPVPAF NVINGGSHAG NKLAMQEFMI
LPVGASSFKE AMRIGAEVYH HLKGVKAKY GKDATNVGDE GGFAPNILEN NEALELLKTA
IQAAGYPDKV VIGMDVAASE FYRNGKYDLD FKSPDDPARH ISGEKLGELY KNFIQNYPPV
SIEDPFDQDD WATWTSFLSG VDIQIVGDDL TVTNPKRIAQ AVEKKACNCL LLKVNQIGSV
TESIQACKLA QSNWGVVMVS HRSGETEDTF IADLVVGLCT GQIKTGAPCR SERLAKYNQL
MRIEEALGDK AVFAGRKFRN PKAK

[ANTIBODY SPECIFICITY]

The antibody is a rabbit polyclonal antibody raised against MSE. It has been selected for its ability to recognize MSE in immunohistochemical staining and western blotting.

[APPLICATIONS]

Western blotting: 1:100-400

Immunocytochemistry in formalin fixed cells: 1:100-500

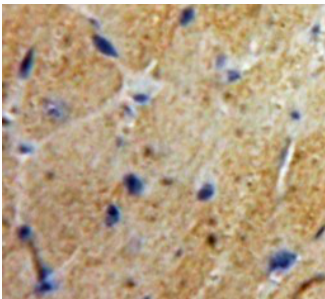
Immunohistochemistry in formalin fixed frozen section: 1:100-500

Immunohistochemistry in paraffin section: 1:50-200

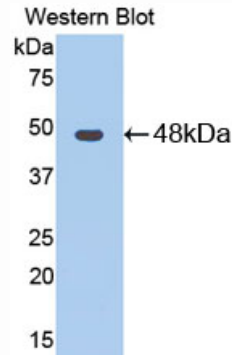
Enzyme-linked Immunosorbent Assay: 1:100-200

Optimal working dilutions must be determined by end user.

[IMAGES]



Used in DAB staining on formalin fixed
paraffin-embedded heart tissue



Used in Western Blot, Sample:
Recombinant MSE, Mouse

[CONTENTS]

Form & Buffer: Supplied as solution form in PBS, pH7.4, containing 0.02% NaN₃, 50% glycerol.

[QUALITY CONTROL]

Content: The quality control contains recombinant MSE (Met3~Lys434) dispersed in loading buffer.

Usage: 10uL per well when 3,3'-Diaminobenzidine (DAB) as the substrate.
5uL per well when used in enhanced chemiluminescent (ECL).

Note: The quality control is specifically manufactured as the positive control. Not used for other purposes.

Loading Buffer: 100mM Tris (pH8.8), 2% SDS, 200mM NaCl, 50% glycerol, BPB 0.01%, NaN₃ 0.02%.

[STORAGE]

Store at 4°C for frequent use. Stored at -20°C to -80°C in a manual defrost freezer for one year without detectable loss of activity. Avoid repeated freeze-thaw cycles.