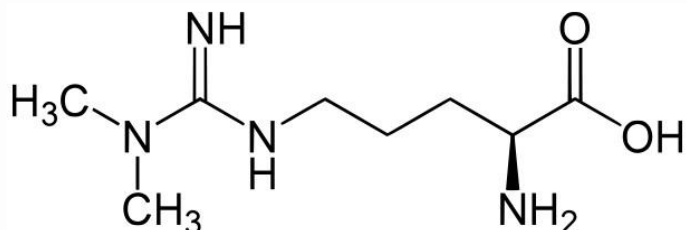


CPB301Ge11 100µg**BSA Conjugated Asymmetrical Dimethylarginine (ADMA)*****Instruction manual***

FOR IN VITRO USE AND RESEARCH USE ONLY
NOT FOR USE IN CLINICAL DIAGNOSTIC PROCEDURES

11th Edition (Revised in May, 2016)

[**PROPERTIES**]

Source: Protein Conjugation**Original Structure:****Original Chemical Formula:** C₈H₁₈N₄O₂**Original Mol. Mass:** 202.3Da**Purity:** >90%**Traits:** Freeze-dried powder.**Buffer Formulation:** PBS, pH7.4.**Applications:** Immunogen; Coating Antigen; ELISA; SDS-PAGE.

[**USAGE**]

Reconstitute in PBS (pH7.4) to a concentration of 0.1-1.0 mg/mL. Do not vortex.

[**STORAGE AND STABILITY**]

Storage: Avoid repeated freeze/thaw cycles.

Store at 2-8°C for one month.

Aliquot and store at -80°C for 12 months.

Stability Test: The thermal stability is described by the loss rate. The loss rate was determined by accelerated thermal degradation test, that is, incubate the protein at 37°C for 48h, and no obvious degradation and precipitation were observed. The loss rate is less than 5% within the expiration date under appropriate storage condition.

[IDENTIFICATION]

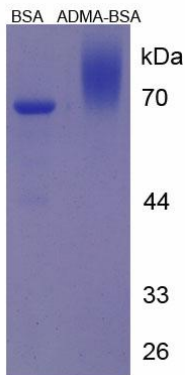


Figure 1. SDS-PAGE

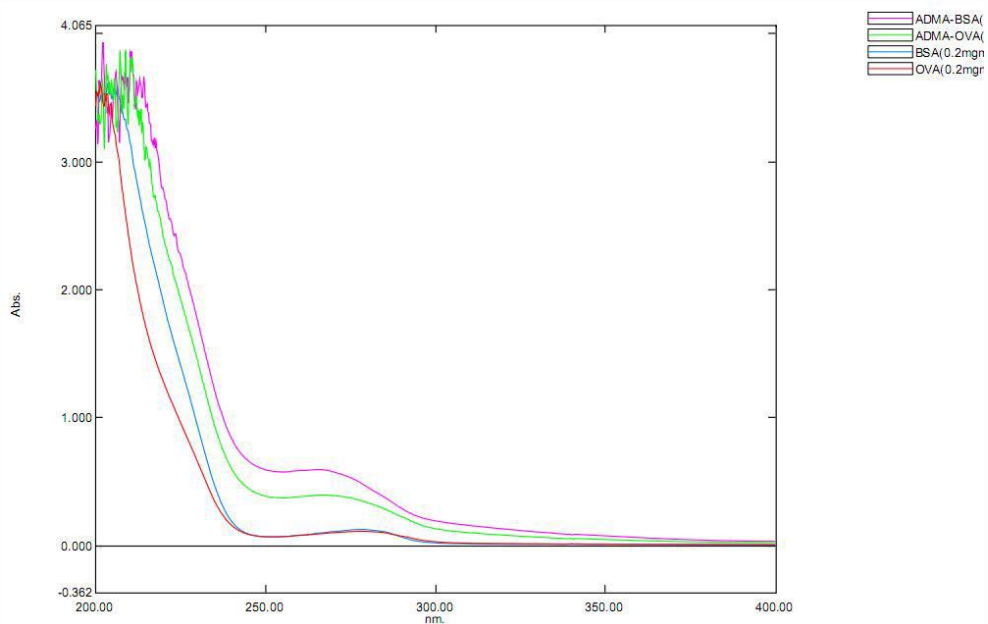


Figure 2. UV-spectrum