



**CPB526Ge11 10 $\mu$ g  
BSA Conjugated Lipopolysaccharide (LPS)  
*Instruction manual***

FOR RESEARCH USE ONLY  
NOT FOR USE IN CLINICAL DIAGNOSTIC PROCEDURES

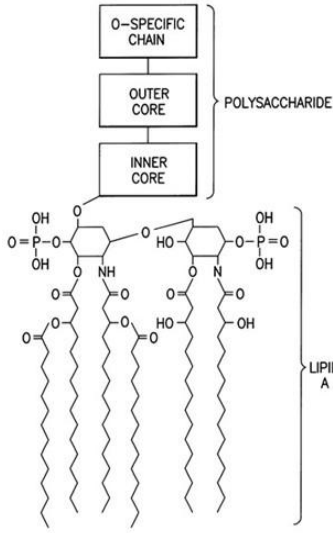
---

11th Edition (Revised in May, 2016)

## [ **PROPERTIES** ]

**Source:** Protein Conjugation

**Original Chemical Formula:**



**Purity:** >90%

**Traits:** Freeze-dried powder.

**Buffer Formulation:** 10mM PBS, pH7.4.

**Original Concentration:** 4.1mg/mL

**Applications:** Immunogen; SDS-PAGE.

## [ **USAGE** ]

Reconstitute in 10mM PBS (pH7.4) to a concentration of 0.1-1.0 mg/mL. Do not vortex.

## [ **STORAGE AND STABILITY** ]

**Storage:** Avoid repeated freeze/thaw cycles.

Store at 2-8°C for one month.

Aliquot and store at -80°C for 12 months.

**Stability Test:** The thermal stability is described by the loss rate. The loss rate was determined by accelerated thermal degradation test, that is, incubate the protein at 37°C for 48h, and no obvious degradation and precipitation were observed. The loss rate is less than 5% within the expiration date under appropriate storage condition.

## [ IDENTIFICATION ]

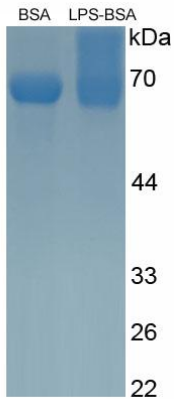


Figure 1. SDS-PAGE

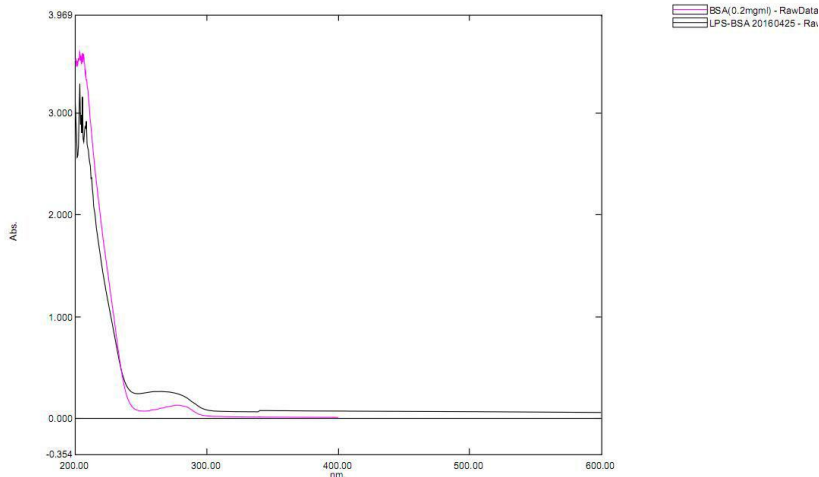


Figure2. UV-spectrum

## [ IMPORTANT NOTE ]

The kit is designed for research use only, we will not be responsible for any issue if the kit was used in clinical diagnostic or any other procedures.