

**MAA207Hu72**

**Biotin-linked Antibody to Alanine Aminotransferase (ALT)**

**Organism Species: Homo sapiens (Human)**

***Instruction manual***

FOR IN VITRO USE AND RESEARCH USE ONLY

NOT FOR USE IN CLINICAL DIAGNOSTIC PROCEDURES

---

---

10th Edition (Revised in Jan, 2014)

## **[ PRODUCT INFORMATION ]**

**Immunogen:** ALT, Human

**Clonality:** Monoclonal

**Conjugation:** Biotin

**Clone number:** H4

**Host:** Mouse

**Immunoglobulin Type:** IgG2b Kappa

**Purification:** Affinity Chromatography.

**Applications:** WB, ICC, IHC-P, IHC-F, ELISA

**Concentration:** 500µg/mL

**UOM:** 200µg

## **[ IMMUNOGEN INFORMATION ]**

**Immunogen:** Recombinant ALT (Ile255~Ser496) with N-terminal His-Tag expressed in *E.coli*.

**Accession No.:** RPA207Hu01

## **[ ANTIBODY SPECIFICITY ]**

The antibody is a mouse monoclonal antibody raised against ALT. It has been selected for its ability to recognize ALT in immunohistochemical staining and western blotting.

## **[ APPLICATIONS ]**

Western blotting: 1:100-400

Immunocytochemistry in formalin fixed cells: 1:100-500

Immunohistochemistry in formalin fixed frozen section: 1:100-500

Immunohistochemistry in paraffin section: 1:50-200

Enzyme-linked Immunosorbent Assay: 1:100-200

Optimal working dilutions must be determined by end user.

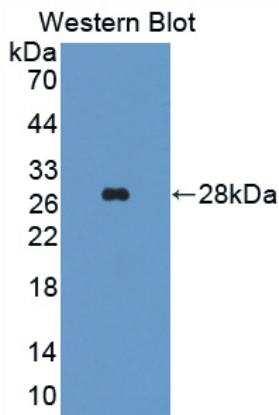
## [ **CONTENTS** ]

**Form & Buffer:** Supplied as solution form in PBS, pH7.4, containing 0.02% NaN<sub>3</sub>, 50% glycerol.

## [ **STORAGE** ]

Store at 4°C for frequent use. Stored at -20°C to -80°C in a manual defrost freezer for one year without detectable loss of activity. Avoid repeated freeze-thaw cycles.

## [ **IMAGES** ]



Used in Western Blot, Sample:  
Recombinant ALT, Human