

PAA294Ge71

Biotin-linked Antibody to Glutathione (GSH)

Organism Species: General

Instruction manual

FOR IN VITRO USE AND RESEARCH USE ONLY
NOT FOR USE IN CLINICAL DIAGNOSTIC PROCEDURES

9th Edition (Revised in Jul, 2013)

[PRODUCT INFORMATION]

Immunogen: GSH-OVA

Conjugation: Biotin

Clonality: Polyclonal

Host: Rabbit

Immunoglobulin Type: IgG

Purification: Affinity Chromatography.

Applications: WB, ICC, IHC-P, IHC-F, ELISA

Concentration: 100µg/mL

UOM: 100µg

[IMMUNOGEN INFORMATION]

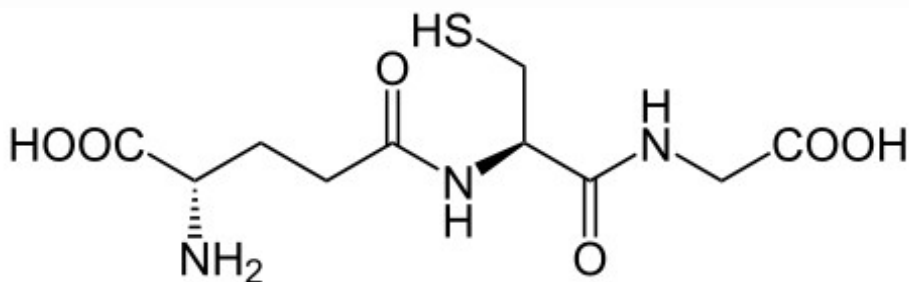
Immunogen: Small Molecule, GSH conjugated to OVA.

Accession No.: CPA294Ge21

Chemical Formula: C₁₀H₁₇N₃O₆S

Mol. Mass: 307.32g/mol

Structural Formula:



[ANTIBODY SPECIFICITY]

The antibody is a rabbit polyclonal antibody raised against GSH. It has been selected for its ability to recognize GSH in immunohistochemical staining and western blotting.

[APPLICATIONS]

Western blotting: 1:100-400

Immunocytochemistry in formalin fixed cells: 1:100-500

Immunohistochemistry in formalin fixed frozen section: 1:100-500

Immunohistochemistry in paraffin section: 1:50-200

Enzyme-linked Immunosorbent Assay: 1:100-200

Optimal working dilutions must be determined by end user.

[CONTENTS]

Form & Buffer: Supplied as solution form in PBS, pH7.4, containing 0.02% NaN₃, 50% glycerol.

[STORAGE]

Store at 4°C for frequent use. Stored at -20°C to -80°C in a manual defrost freezer for one year without detectable loss of activity. Avoid repeated freeze-thaw cycles.