

PAD353Hu71

Biotin-Linked Antibody to Slit Homolog 3 (Slit3)

Organism Species: Homo sapiens (Human)

Instruction manual

FOR IN VITRO USE AND RESEARCH USE ONLY
NOT FOR USE IN CLINICAL DIAGNOSTIC PROCEDURES

9th Edition (Revised in Jul, 2013)

[PRODUCT INFORMATION]

Immunogen: Slit3, Human

Clonality: Polyclonal

Conjugation: Biotin

Host: Rabbit

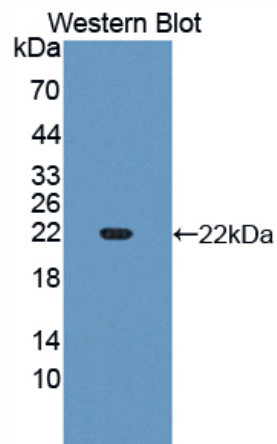
Immunoglobulin Type: IgG

Purification: Affinity Chromatography.

Applications: WB, ICC, IHC-P, IHC-F, ELISA

Concentration: 200µg/mL

UOM: 100µg



Sample: Recombinant Slit3, Human

[IMMUNOGEN INFORMATION]

Immunogen: Recombinant Slit3 (Lys1405~Glu1512) expressed in *E.coli*.

Accession No.: RPD353Hu01

Sequence: The target protein is fused with two N-terminal Tags, His-tag and S-tag and its sequence is listed below.

MHHHHHHSSG LVPRGSGMKE TAAKFERQH MDSPDLGTTD DDKAMADIGS EF- KNDSAN
ACSAFKCHHG QCHISDQGEP YCLCQPGFSG EHCQQENPCL GQVVREVIRR
QKGYASCATA SKVPIMECRG GCGPQCCQPT RSKRRKYVFQ CTDGSSFVEE VE

[ANTIBODY SPECIFICITY]

The antibody is a rabbit polyclonal antibody raised against Slit3. It has been selected for its ability to recognize Slit3 in immunohistochemical staining and western blotting.

[APPLICATIONS]

Western blotting: 1:50-400

Immunocytochemistry in formalin fixed cells: 1:50-500

Immunohistochemistry in formalin fixed frozen section: 1:50-500

Immunohistochemistry in paraffin section: 1:10-100

Enzyme-linked Immunosorbent Assay: 1:100-200

Optimal working dilutions must be determined by end user.

[CONTENTS]

Form & Buffer: Supplied as solution form in PBS, pH7.4, containing 0.02% NaN₃, 50% glycerol.

[STORAGE]

Store at 4°C for frequent use. Stored at -20°C to -80°C in a manual defrost freezer for one year without detectable loss of activity. Avoid repeated freeze-thaw cycles.