

PAE712Mu71

Biotin-Linked Antibody to Tubulin Beta 6 (TUBb6)

Organism Species: *Mus musculus* (Mouse)

Instruction manual

FOR IN VITRO USE AND RESEARCH USE ONLY
NOT FOR USE IN CLINICAL DIAGNOSTIC PROCEDURES

9th Edition (Revised in Jul, 2013)

[**PRODUCT INFORMATION**]

Immunogen: TUBb6, Mouse

Clonality: Polyclonal

Conjugation: Biotin

Host: Rabbit

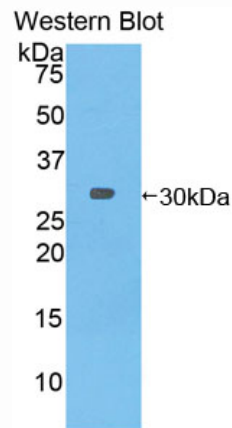
Immunoglobulin Type: IgG

Purification: Affinity Chromatography.

Applications: WB, ICC, IHC-P, IHC-F, ELISA

Concentration: 200µg/mL

UOM: 100µg



Sample: Recombinant TUBb6, Mouse

[**IMMUNOGEN INFORMATION**]

Immunogen: Recombinant TUBb6 (Glu194~Glu421) expressed in *E.coli*.

Accession No.: RPE712Mu01

Sequence: The target protein is fused with two N-terminal Tags, His-tag and T7-tag and its sequence is listed below.

MGSSHHHHHH SGLVPRGSH MASMTGGQQM GRGSEF- ENTDETY CIDNEALYDI
CFRTLKLTP TYGDLNHLVS ATMSGVTTSL RFPGQLNADL RKLAVNMVVF PRLHFFMPGF
APLTARQSQQ YRALTVPILT QQMFDKNNM AACDPRHGRY LTVATVFRGP
MSMKEVDEQM LAIQNKSSY FVEWIPNNVK VAVCDIPPRG LKMASTFIGN STAIQELFKR
ISEQFSAMFR RKAFLHWFTG EGMDMEFTE AESNMNDLVS E

[ANTIBODY SPECIFICITY]

The antibody is a rabbit polyclonal antibody raised against TUBb6. It has been selected for its ability to recognize TUBb6 in immunohistochemical staining and western blotting.

[APPLICATIONS]

Western blotting: 1:50-400

Immunocytochemistry in formalin fixed cells: 1:50-500

Immunohistochemistry in formalin fixed frozen section: 1:50-500

Immunohistochemistry in paraffin section: 1:10-100

Enzyme-linked Immunosorbent Assay: 1:100-200

Optimal working dilutions must be determined by end user.

[CONTENTS]

Form & Buffer: Supplied as solution form in PBS, pH7.4, containing 0.02% NaN₃, 50% glycerol.

[STORAGE]

Store at 4°C for frequent use. Stored at -20°C to -80°C in a manual defrost freezer for one year without detectable loss of activity. Avoid repeated freeze-thaw cycles.