

EPA766Hu61 100µg

Eukaryotic A Disintegrin And Metalloprotease 10 (ADAM10)

Organism Species: *Homo sapiens (Human)*

Instruction manual

FOR RESEARCH USE ONLY

NOT FOR USE IN CLINICAL DIAGNOSTIC PROCEDURES

13th Edition (Revised in Aug, 2023)

[PROPERTIES]

Source: Eukaryotic expression

Host: 293F cell

Residues: Thr214~Glu672

Tags: N-terminal His Tag

Subcellular Location: Membrane

Purity: > 80%

Traits: Freeze-dried powder

Buffer formulation: PBS, pH7.4, containing 5% Trehalose .

Original Concentration: 250µg/mL

Applications: Positive Control; Immunogen; SDS-PAGE; WB.

(May be suitable for use in other assays to be determined by the end user.)

Predicted isoelectric point: 6.2

Predicted Molecular Mass: 52.2kDa

Accurate Molecular Mass: 60kDa as determined by SDS-PAGE reducing conditions.

Phenomenon explanation:

The possible reasons that the actual band size differs from the predicted are as follows:

1. Splice variants: Alternative splicing may create different sized proteins from the same gene.
2. Relative charge: The composition of amino acids may affects the charge of the protein.
3. Post-translational modification: Phosphorylation, glycosylation, methylation etc.
4. Post-translation cleavage: Many proteins are synthesized as pro-proteins, and then cleaved to give the active form.
5. Polymerization of the target protein: Dimerization, multimerization etc.

[USAGE]

Reconstitute in 10mM PBS (pH7.4) to a concentration of 0.1-1.0 mg/mL. Do not vortex.

[STORAGE AND STABILITY]

Storage: Avoid repeated freeze/thaw cycles.

Store at 2-8°C for one month.

Aliquot and store at -80°C for 12 months.

Stability Test: The thermal stability is described by the loss rate. The loss rate was determined by accelerated thermal degradation test, that is, incubate the protein at 37°C for 48h, and no obvious degradation and precipitation were observed. The loss rate is less than 5% within the expiration date under appropriate storage condition.

[**SEQUENCE**]

```

T TSAEKN TCQLYIQTDH LFFKYYGTRE AVIAQISSHV
KAIDTIYQTT DFGSIRNISF MVKRIRINTT ADEKDPTNPF RFPNIGVEKF
LELNSEQNHD DYCLAYVFTD RDFDDGVLGL AWVGAPSGSS GGICEKSKLY
SDGKKKSLNT GIITVQNYGS HVPPKVSHIT FAHEVGHNFG SPHDSGTECT
PGESKNLQK  ENGNYIMYAR ATSGDKLNNN KFSLCSIRNI SQVLEKRRNN
CFVESGQPIC GNGMVEQGE  CDCGYSDQCK DECCFDANQP EGRKCKLKPG
KQCSPSQGPC CTAQCAFKSK  SEKCRDSDC  AREGICNGFT  ALCPASDPKP
NFTDCNRHTQ VCINGQCAGS  ICEKYGLEEC TCASSDGKDD  KELCHVCCMK
KMDPSTCAST GSVQWSRHFS  GRTITLQPGS PCNDFRGYCD  VFMRCRLVDA
DGPLARLKA  IFSPELYENI  AE
    
```

[**IDENTIFICATION**]

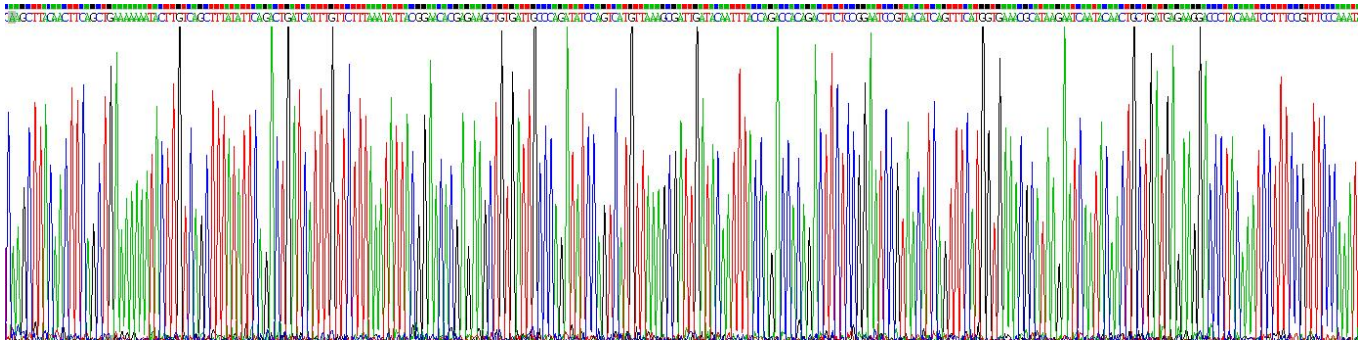


Figure . Gene Sequencing (extract)



Figure. SDS-PAGE

[IMPORTANT NOTE]

The kit is designed for research use only, we will not be responsible for any issue if the kit was used in clinical diagnostic or any other procedures.