

**EPB886Mu61 1**

**Eukaryotic Angiotensin I Converting Enzyme 2 (ACE2)**

**Organism Species: *Mus musculus* (Mouse)**

***Instruction manual***

FOR RESEARCH USE ONLY

NOT FOR USE IN CLINICAL DIAGNOSTIC PROCEDURES

---

12th Edition (Revised in Aug, 2016)

**[ PROPERTIES ]**

**Source:** Eukaryotic expression

**Host:** 293F cell

**Residues:** Gln18~Thr740

**Tags:** N-terminal His Tag

**Subcellular Location:** Secreted

**Purity:** > 97%

**Traits:** Freeze-dried powder

**Buffer formulation:** 20mM Tris, 150mM NaCl, pH8.0, containing 1mM EDTA, 1mM DTT, 0.01% SKL, 5% Trehalose and Proclin300.

**Original Concentration:** 200µg/mL

**Applications:** Positive Control; Immunogen; SDS-PAGE; WB.

(May be suitable for use in other assays to be determined by the end user.)

**Predicted isoelectric point:** 5.2

**Predicted Molecular Mass:** 85.2kDa

**Accurate Molecular Mass:** 87kDa as determined by SDS-PAGE reducing conditions.

**[ USAGE ]**

Reconstitute in 20mM Tris, 150mM NaCl (pH8.0) to a concentration of 0.1-1.0 mg/mL. Do not vortex.

**[ STORAGE AND STABILITY ]**

**Storage:** Avoid repeated freeze/thaw cycles.

Store at 2-8°C for one month.

Aliquot and store at -80°C for 12 months.

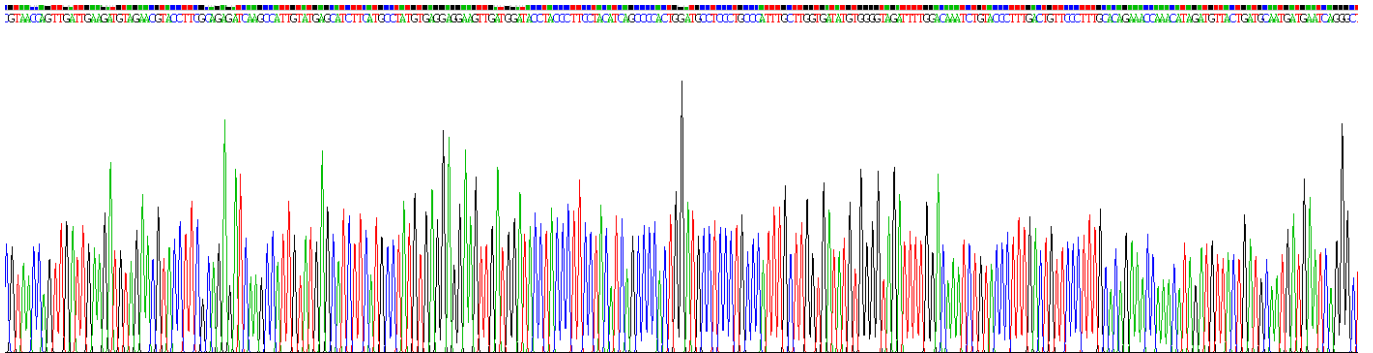
**Stability Test:** The thermal stability is described by the loss rate. The loss rate was determined by accelerated thermal degradation test, that is, incubate the protein at 37°C for 48h, and no obvious degradation and precipitation were observed. The loss rate is less than 5% within the expiration date under appropriate storage condition.

**[ SEQUENCE ]**

```

      QSL TEENAKTFLN NFNQEAEDLS YQSSLASWNY
NTNITEENAQ KMSEAAAKWS AFYEEQSKTA QSFSLQEIQT PIIKRQLQAL
QQSGSSALSA DKNKQLNTIL NTMSTIYSTG KVCNPKNPQE CLLLEPGLDE
IMATSTDYNS RLWAWEGWRA EVGKQLRPLY EEYVVLKNEM ARANNYNDYG
DYWRGDYEA EADGYNYNRN QLIEDVERTF AEIKPLYEHL HAYVRRKLM D
TYPYISPTG CLPAHLLGDM WGRFWTNLYP LTVPFAQKPN IDVTDAMMNQ
GWAERIFQE AEKFFVSVGL PHMTQGFWAN SMLTEPADGR KVVCHPTAWD
LGHGDFRIKM CTKVTMDNFL TAHHEMGIHQ YDMAYARQPF LLRNGANEGF
HEAVGEIMSL SAATPKHLKS IGLLP SDFQE DSETEINFL KQALTIVGTL
PFTYMLEKWR WMVFRGEIPK EQWMKKWEM KREIVGVVEP LPHDETYCDP
ASLFHVSNDY SFIRYYTRTI YQFQFQEALC QAAKYNGSLH KCDISNSTEA
GQKLLKMLSL GNSEPWTKAL ENVVGARNMD VKPLLNYFQP LFDWLKEQNR
NSFVGWNT EW SPYADQSIKV RISLKSALGA NAYEWTNNEM FLFRSSVAYA
MRKYFSIIKN QTVPFLEEDV RVSDLKPRVS FYFFVTSPQN VSDVIPRSEV
EDAIRMSRGR INDVFG LNDN SLEFLGIHPT LEPPYQPPVT
    
```

**[ IDENTIFICATION ]**



**Figure . Gene Sequencing (extract)**

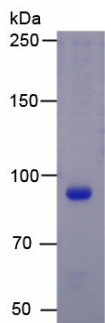


Figure. SDS-PAGE

**[ IMPORTANT NOTE ]**

The kit is designed for research use only, we will not be responsible for any issue if the kit was used in clinical diagnostic or any other procedures.