

EPA017Hu61 100µg

Eukaryotic Cadherin, Epithelial (CDHE)

Organism Species: *Homo sapiens (Human)*

Instruction manual

FOR RESEARCH USE ONLY

NOT FOR USE IN CLINICAL DIAGNOSTIC PROCEDURES

12th Edition (Revised in Aug, 2016)

[PROPERTIES]

Source: Eukaryotic expression

Host: 293F Cell

Residues: Asp155~Ile707

Tags: N-terminal His Tag

Subcellular Location: Membrane, Golgi apparatus

Purity: > 95%

Traits: Freeze-dried powder

Buffer formulation: PBS, pH7.4, containing 0.01% SKL, 1mM DTT, 5% Trehalose and Proclin300.

Original Concentration: 200µg/mL

Applications: Positive Control; Immunogen; SDS-PAGE; WB.

(May be suitable for use in other assays to be determined by the end user.)

Predicted isoelectric point: 4.0

Predicted Molecular Mass: 62.0kDa

Accurate Molecular Mass: 75kDa as determined by SDS-PAGE reducing conditions.

Phenomenon explanation:

The possible reasons that the actual band size differs from the predicted are as follows:

1. Splice variants: Alternative splicing may create different sized proteins from the same gene.
2. Relative charge: The composition of amino acids may affect the charge of the protein.
3. Post-translational modification: Phosphorylation, glycosylation, methylation etc.
4. Post-translation cleavage: Many proteins are synthesized as pro-proteins, and then cleaved to give the active form.
5. Polymerization of the target protein: Dimerization, multimerization etc.

[USAGE]

Reconstitute in 10mM PBS (pH7.4) to a concentration of 0.1-1.0 mg/mL. Do not vortex.

[STORAGE AND STABILITY]

Storage: Avoid repeated freeze/thaw cycles.

Store at 2-8°C for one month.

Aliquot and store at -80°C for 12 months.

Stability Test: The thermal stability is described by the loss rate. The loss rate was determined by accelerated thermal degradation test, that is, incubate the protein at 37°C for 48h, and no obvious degradation and precipitation were observed. The loss rate is less than 5% within the expiration date under appropriate storage condition.

[SEQUENCE]

```

DWVIPP  ISCPENEKGP  FPKNLVQIKS  NKDKEGKVFY  SITGQGADTP
PVGVFIIERE  TGWLKVTEPL  DRERIAATYTL  FSHAVSSNGN  AVEDPMEILI
TVTDQNDNKP  EFTQEVFKGS  VMEGALPGTS  VMEVTATDAD  DDVNTYNAAI
AYTILSQDPE  LPDKNMFTIN  RNTGVISVVT  TGLDRESFPT  YTLVVQAADL
QGEGLSTTAT  AVITVTDND  NPPIFNPTTY  KGQVPENEA  VVITTLKVTD
ADAPNTPAWE  AVYTI LNDDG  GQFVVTNPV  NNDGILKTAK  GLDFEAKQY
ILHVAVTNV  PFEVSLTST  ATVTVDVLDV  NEAPIFVPE  KRVESEDFG
VGQEITSYTA  QEPDTFMEQK  ITYRIWRDTA  NWLEINPDTG  AISTRAELDR
EDFEHVKNST  YALIIATDN  GSPVATGTGT  LLLILSDVND  NAPIPEPRTI
FFCERNPKPQ  VINIIDADLP  PNTSPFTAEL  THGASANWTI  QYNDPTQESI
ILKPKMALEV  GDYKINLKLM  DNQNKDQVTT  LEVSVCDCEG  AAGVCRKAQP
VEAGLQI
  
```

[IDENTIFICATION]

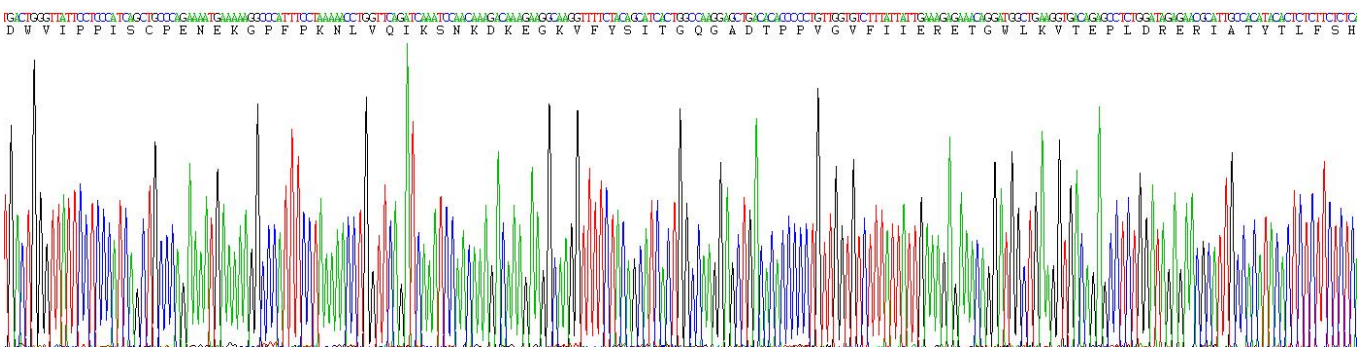


Figure. Gene Sequencing (Extract)

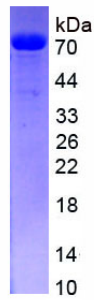


Figure. SDS-PAGE

[IMPORTANT NOTE]

The kit is designed for research use only, we will not be responsible for any issue if the kit was used in clinical diagnostic or any other procedures.