

**EPC374Hu61 100µg**

**Eukaryotic Carboxylesterase 1 (CES1)**

**Organism Species: *Homo sapiens (Human)***

***Instruction manual***

FOR RESEARCH USE ONLY

NOT FOR USE IN CLINICAL DIAGNOSTIC PROCEDURES

---

12th Edition (Revised in Aug, 2016)

**[ PROPERTIES ]**

**Source:** Eukaryotic expression

**Host:** 293F cell

**Residues:** Gly18~Leu567

**Tags:** N-terminal His Tag

**Subcellular Location:** Endoplasmic reticulum lumen

**Purity:** > 95%

**Traits:** Freeze-dried powder

**Buffer formulation:** PBS, pH7.4, containing 0.01% SKL, 5% Trehalose.

**Original Concentration:** 200µg/mL

**Applications:** Positive Control; Immunogen; SDS-PAGE; WB.

(May be suitable for use in other assays to be determined by the end user.)

**Predicted isoelectric point:** 6.5

**Predicted Molecular Mass:** 61.6kDa

**Accurate Molecular Mass:** 62kDa as determined by SDS-PAGE reducing conditions.

**[ USAGE ]**

Reconstitute in 10mM PBS (pH7.4) to a concentration of 0.1-1.0 mg/mL. Do not vortex.

**[ STORAGE AND STABILITY ]**

**Storage:** Avoid repeated freeze/thaw cycles.

Store at 2-8°C for one month.

Aliquot and store at -80°C for 12 months.

**Stability Test:** The thermal stability is described by the loss rate. The loss rate was determined by accelerated thermal degradation test, that is, incubate the protein at 37°C for 48h, and no obvious degradation and precipitation were observed. The loss rate is less than 5% within the expiration date under appropriate storage condition.

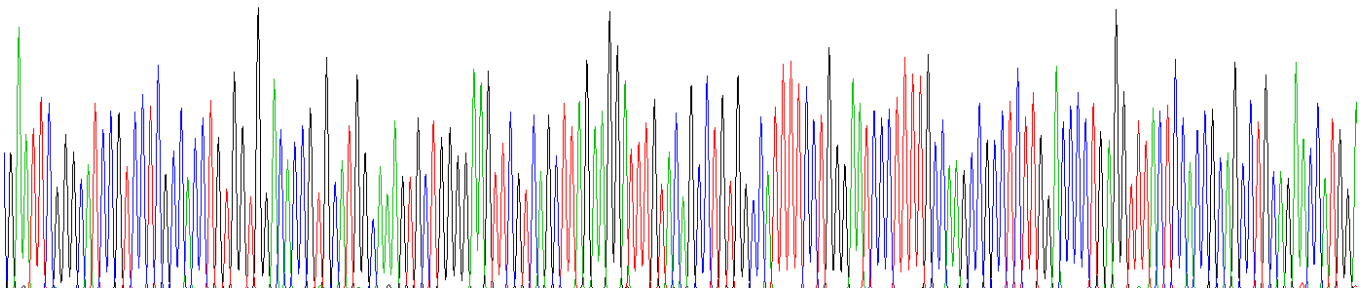
**[ SEQUENCE ]**

```

                GHP SSPPVVDTVH GKVLGKFVSL EGFAQPVAIF
LGIPFAKPPL  GPLRFTPPQP AEPWSFVKNA TSYPPMCTQD PKAGQLLSEL
FTNRKENIPL  KLSEDCLYLN IYTPADLTKK NRLPVMVWIH GGGLMVGAAAS
TYDGLALAAH  ENVVVVTIQY  RLGIWGFFST  GDEHSRGNWG  HLDQVAALRW
VQDNIAFSGG  NPGSVTIFGE  SAGGESVSVL  VLSPLAKNLF  HRAISESGVA
LTSVLVKKGD  VKPLAEQIAI  TAGCKTTTSA  VMVHCLRQKT  EEELLETTLK
MKFLSLDLQG  DPRESQPLLG  TVIDGMLLLK  TPEELQAERN  FHTVPYMGVI
NKQEFGLWIP  MQLMSYPLSE  GQLDQKTAMS  LLWKSYPVLC  IAKELIPEAT
EKYLGTTDDT  VKKKDLFLDL  IADVMTGVPS  VIVARNHRDA  GAPTMYEFQ
YRPSFSSDMK  PKTVIGDHGD  ELFSVFGAPF  LKEGASEEEI  RLSKMVMKFW
ANFARNGNPN  GEGLPHWPEY  NQKEGYLQIG  ANTQAAQKLK  DKEVAFWTNL
FAKKAWEKPP  QTEHIEL
    
```

**[ IDENTIFICATION ]**

GAATTGGGCATCCGTCTGTCACCTGTGGTGGACACCGTGCATGGCAAAGTGTGGGGAAAGTTCGTACGCTTAGAAGGATTGTACAGCCTGTGGCCATTTCTGGGAATCCCTTTGCCAAGCCGCTCTTGGACCCCTGAGGTTTACTCCACCGCAGCCTGCAGAACCATGG



**Figure . Gene Sequencing (extract)**

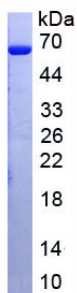


Figure. SDS-PAGE

**[ IMPORTANT NOTE ]**

The kit is designed for research use only, we will not be responsible for any issue if the kit was used in clinical diagnostic or any other procedures.