

EPA150Hu61 50µg
Eukaryotic Carcinoembryonic Antigen (CEA)
Organism Species: *Homo sapiens (Human)*
Instruction manual

FOR RESEARCH USE ONLY
NOT FOR USE IN CLINICAL DIAGNOSTIC PROCEDURES

13th Edition (Revised in Aug, 2023)

[PROPERTIES]

Source: Eukaryotic expression

Host: 293F cell

Residues: Lys35~Ala685

Tags: N-terminal His Tag

Subcellular Location: Secreted

Purity: > 97%

Traits: Freeze-dried powder

Buffer formulation: PBS, pH7.4, containing 5% Trehalose .

Original Concentration: 500µg/mL

Applications: Positive Control; Immunogen; SDS-PAGE; WB.

(May be suitable for use in other assays to be determined by the end user.)

Predicted isoelectric point: 5.4

Predicted Molecular Mass: 73.0kDa

Accurate Molecular Mass: 80kDa as determined by SDS-PAGE reducing conditions.

Phenomenon explanation:

The possible reasons that the actual band size differs from the predicted are as follows:

1. Splice variants: Alternative splicing may create different sized proteins from the same gene.
2. Relative charge: The composition of amino acids may affect the charge of the protein.
3. Post-translational modification: Phosphorylation, glycosylation, methylation etc.
4. Post-translation cleavage: Many proteins are synthesized as pro-proteins, and then cleaved to give the active form.
5. Polymerization of the target protein: Dimerization, multimerization etc.

[USAGE]

Reconstitute in 10mM PBS (pH7.4) to a concentration of 0.1-1.0 mg/mL. Do not vortex.

[STORAGE AND STABILITY]

Storage: Avoid repeated freeze/thaw cycles.

Store at 2-8°C for one month.

Aliquot and store at -80°C for 12 months.

Stability Test: The thermal stability is described by the loss rate. The loss rate was determined by accelerated thermal degradation test, that is, incubate the protein at 37°C for 48h, and no obvious degradation and precipitation were observed. The loss rate is less than 5% within the expiration date under appropriate storage condition.

[**SEQUENCE**]

```

                                KLTIES TPFNVAEGKE
VLLLVHNL PQ HLF GYSWYKG ERVDGNRQII GYVIGTQQAT PGPAYSGREI
IYPNASLLIQ NIIQNDTGFY TLHVIKSDLV NEEATGQFRV YPELPKPSIS
SNNSKPVEDK DAVAFTCEPE TQDATYLWVW NNQSLPVS PR LQLSNGNRTL
TLFNVTRNDT ASYKCETQNP VSARRSDSVI LNVLYGPDAP TISPLNTSYR
SGENLNLSCH AASNPPAQYS W FVNGTFQQS TQELFIPNIT VNNSGSYTCQ
AHNSDTGLNR TTVTTITVYA EPPKPFITSN NSNPVEDEDA VALTCEPEIQ
NTTYLWVWNN QSLPVS PRLQ LSNDRRTL L LSVTRNDVGP YECGIQNKLS
VDHSDPVILN VLYGPD DPTI SPSYTYRPG VNL SLSCHAA SNPPAQYSWL
IDGNIQQHTQ ELFISNITEK NSGLYTCQAN NSASGHSRTT VKTITVSAEL
PKPSSSNNNS KPVEDK DAVA FTCEPEAQNT TYLWVWNGQS LPVSPRLQLS
NGNRTLTLFN VTRNDARAYV CGIQNSVSAN RSDPVTL DVL YGPDTP IISP
PDSSYLSGAN LNL SCHSASN PSPQYSWRIN GIPQHTQVL FIAKITPNNN
GTYACFVSNL ATGRNNSIVK SITVSASGTS PGLSA
    
```

[**IDENTIFICATION**]

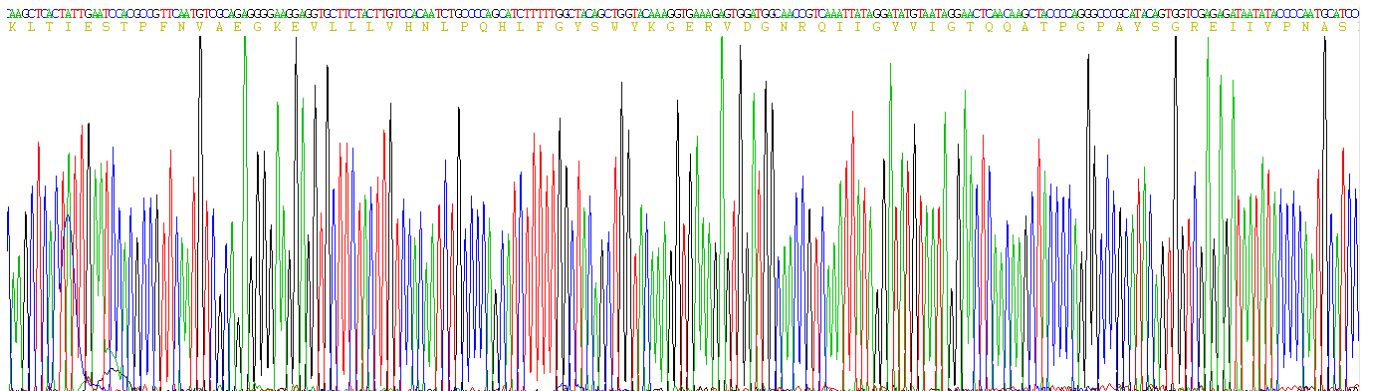


Figure. Gene Sequencing (Extract)

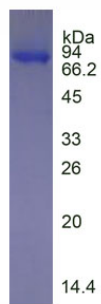


Figure. SDS-PAGE

[IMPORTANT NOTE]

The kit is designed for research use only, we will not be responsible for any issue if the kit was used in clinical diagnostic or any other procedures.