

**EPA677Mu61 100µg**  
**Eukaryotic Coagulation Factor XII (F12)**  
**Organism Species: *Mus musculus* (Mouse)**  
***Instruction manual***

FOR RESEARCH USE ONLY  
NOT FOR USE IN CLINICAL DIAGNOSTIC PROCEDURES

---

12th Edition (Revised in Aug, 2016)

**[ PROPERTIES ]**

**Source:** Eukaryotic expression

**Host:** 293F Cell

**Residues:** Ala20~Ser597

**Tags:** N-terminal His Tag

**Subcellular Location:** Secreted

**Purity:** > 95%

**Traits:** Freeze-dried powder

**Buffer formulation:** 20mM Tris, 150mM NaCl, pH8.0, containing 0.01% SKL, 5% Trehalose.

**Original Concentration:** 250µg/mL

**Applications:** Positive Control; Immunogen; SDS-PAGE; WB.

(May be suitable for use in other assays to be determined by the end user.)

**Predicted isoelectric point:** 6.9

**Predicted Molecular Mass:** 65.3kDa

**Accurate Molecular Mass:** 110kDa as determined by SDS-PAGE reducing conditions.

**Phenomenon explanation:**

The possible reasons that the actual band size differs from the predicted are as follows:

1. Splice variants: Alternative splicing may create different sized proteins from the same gene.
2. Relative charge: The composition of amino acids may affect the charge of the protein.
3. Post-translational modification: Phosphorylation, glycosylation, methylation etc.
4. Post-translation cleavage: Many proteins are synthesized as pro-proteins, and then cleaved to give the active form.
5. Polymerization of the target protein: Dimerization, multimerization etc.

**[ USAGE ]**

Reconstitute in 20mM Tris, 150mM NaCl (pH8.0) to a concentration of 0.1-1.0 mg/mL. Do not vortex.

**[ STORAGE AND STABILITY ]**

**Storage:** Avoid repeated freeze/thaw cycles.

Store at 2-8°C for one month.

Aliquot and store at -80°C for 12 months.

**Stability Test:** The thermal stability is described by the loss rate. The loss rate was determined by accelerated thermal degradation test, that is, incubate the protein at 37°C for 48h, and no obvious degradation and precipitation were observed. The loss rate is less than 5% within the expiration date under appropriate storage condition.

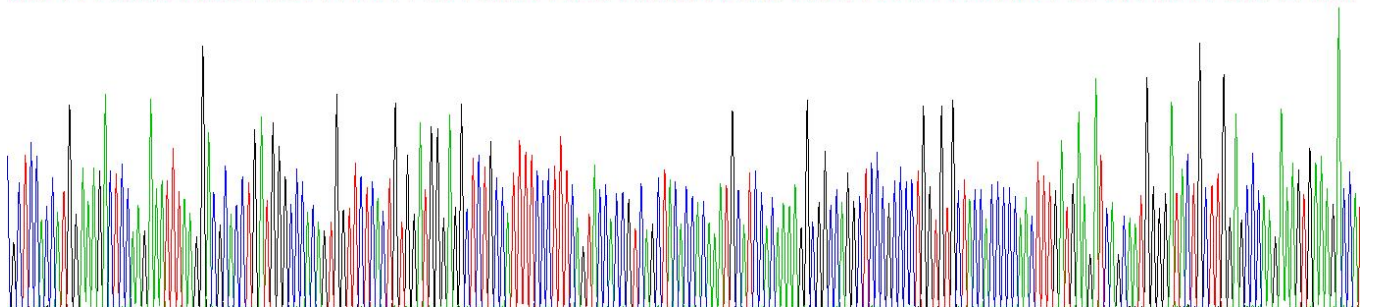
**[ SEQUENCE ]**

```

A PPWKDSKKFK DAPDGPTVVL TVDGRLCHFP
FQYHRQLHHK CIHKRRPGSR PWCATTPNFD EDQQWGYCLE PKKVKDHCSK
HNPCHKGGTC INTPNGPHCL CPEHLTGKHC QKEKCFEPQL LKFFHENELW
FRTGPGGVAR CECKGSEAHC KPVASQACSI NPCLNGGSCL LVEDHPLCRC
PTGYTGYFCD LDLWATCYEG RGLSYRGQAG TTQSGAPCQR WTVEATYRNM
TEKQALSWGL GHHAFCRNPD NDTRPWCFFW SGDRLSWDYC GLEQCQTPTF
APLVVPESQE ESPSQAPSL S HAPNDSTDHQ TSLSKTNTMG CGQFRKGLS
SFMRVVGGGLV ALPGSHPYIA ALYWGNFCA GSLIAPCWVL TAAHCLQNRP
APEELTVVLG QDRHNQSC EW CQTLAVRSYR LHEGFSSITY QHDLALLRLQ
ESKTNSCAIL SPHVQPVCLP SGAAPPSETV LCEVAGWGHQ FEGAEESTF
LQEAQVPFIA LDRCSNSNVH GDAILPGMLC AGFLEGGTDA CQGDSGGPLV
CEEGTAEHQL TLRGVISWGS GCGDRNKPGV YTDVANYLAW IQKHIAS
  
```

**[ IDENTIFICATION ]**

TCTTGCATGGAGCTCCGAMITTAAGGCGGCTGATG33000CAGTGGTCTCAGCTG19GATGG3GCGCTC1300ATTTCCTTTCGTC000STGACCTTAC00CAATG0AT000GAMG003000GGCT000000CTTGTGAGATCAGCATG3300TACTCTTGGAC000GAAAGTGAAAG00A  
A P P W K D S K K F K D A P D G P T V V L T V D G R L C H F F F Q Y H R Q L H H K C I H K R R P G S R P W C A T T P N F D E D Q Q W G Y C L E P K K V K D H



**Figure. Gene Sequencing (Extract)**

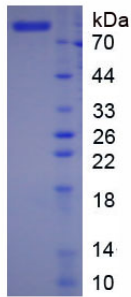


Figure. SDS-PAGE

**[ IMPORTANT NOTE ]**

The kit is designed for research use only, we will not be responsible for any issue if the kit was used in clinical diagnostic or any other procedures.