

**EPC168Mu61 100µg**

**Eukaryotic Glial Cell Line Derived Neurotrophic Factor Receptor Alpha 2 (GFRa2)**

**Organism Species: *Mus musculus* (Mouse)**

***Instruction manual***

FOR RESEARCH USE ONLY

NOT FOR USE IN CLINICAL DIAGNOSTIC PROCEDURES

---

12th Edition (Revised in Aug, 2016)

**[ PROPERTIES ]**

**Source:** Eukaryotic expression

**Host:** 293F cell

**Residues:** Ser22-Ser443

**Tags:** N-terminal His Tag

**Subcellular Location:** Membrane

**Purity:** > 90%

**Traits:** Freeze-dried powder

**Buffer formulation:** 20mM Tris, 150mM NaCl, pH8.0, containing 0.01% SKL, 5% Trehalose.

**Original Concentration:** 80µg/mL

**Applications:** Positive Control; Immunogen; SDS-PAGE; WB.

(May be suitable for use in other assays to be determined by the end user.)

**Predicted isoelectric point:** 7.7

**Predicted Molecular Mass:** 48.7kDa

**Accurate Molecular Mass:** 72kDa as determined by SDS-PAGE reducing conditions.

**Phenomenon explanation:**

The possible reasons that the actual band size differs from the predicted are as follows:

1. Splice variants: Alternative splicing may create different sized proteins from the same gene.
2. Relative charge: The composition of amino acids may affect the charge of the protein.
3. Post-translational modification: Phosphorylation, glycosylation, methylation etc.
4. Post-translation cleavage: Many proteins are synthesized as pro-proteins, and then cleaved to give the active form.
5. Polymerization of the target protein: Dimerization, multimerization etc.

**[ USAGE ]**

Reconstitute in 20mM Tris, 150mM NaCl (pH8.0) to a concentration of 0.1-1.0 mg/mL. Do not vortex.

**[ STORAGE AND STABILITY ]**

**Storage:** Avoid repeated freeze/thaw cycles.

Store at 2-8°C for one month.

Aliquot and store at -80°C for 12 months.

**Stability Test:** The thermal stability is described by the loss rate. The loss rate was determined by accelerated thermal degradation test, that is, incubate the protein at 37°C for 48h, and no obvious degradation and precipitation were observed. The loss rate is less than 5% within the expiration date under appropriate storage condition.

**[ SEQUENCE ]**

```

                SPSSPQGSE LHGWRPQVDC VRANELCAA
SNCSSRYRTL RQCLAGRDRN TMLANKECQA ALEVLQESPL YDCRCKRGMK
KELQCLQIYW SIHLGLTEGE EFYEASPYEP VTSRLSDIFR LASIFSGTGA
DPVVSASNSH CLDAAKACNL NDNCKKLRSS YISICNREIS PTERCNRRKC
HKALRQFFDR VPSEYTYRML FCSCQDQACA ERRRQTILPS CSYEDKEKPN
CLDLRSLCRT DHLCRSRLAD FHANCASYR TITSCPADNY QACLSYAGM
IGFDMTPNYV DSNPTGIVVS PWCNCRGSGN MEECEKFLK DFTENPCLRN
AIQAFGNGTD VNMSPKGPTF SATQAPRVEK TPSLPDDLSD STSLGTSVIT
TCTSIQEQL KANNSKELSM CFTELTTNIS PGSKKVIKLY SGS
    
```

**[ IDENTIFICATION ]**

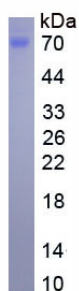


Figure. SDS-PAGE

**[ IMPORTANT NOTE ]**

The kit is designed for research use only, we will not be responsible for any issue if the kit was

used in clinical diagnostic or any other procedures.