

**EPC534Hu61 50µg**  
**Eukaryotic Histidine Rich Glycoprotein (HRG)**  
**Organism Species: *Homo sapiens* (Human)**  
***Instruction manual***

FOR RESEARCH USE ONLY  
NOT FOR USE IN CLINICAL DIAGNOSTIC PROCEDURES

---

13th Edition (Revised in Aug, 2023)

**[ PROPERTIES ]**

**Source:** Eukaryotic expression

**Host:** 293F cell

**Residues:** Val19~Lys525

**Tags:** N-terminal His Tag

**Subcellular Location:** Secreted

**Purity:** > 97%

**Traits:** Freeze-dried powder

**Buffer formulation:** PBS, pH7.4, containing 5% Trehalose .

**Original Concentration:** 200µg/mL

**Applications:** Positive Control; Immunogen; SDS-PAGE; WB.

(May be suitable for use in other assays to be determined by the end user.)

**Predicted isoelectric point:** 7.0

**Predicted Molecular Mass:** 59.3kDa

**Accurate Molecular Mass:** 80kDa as determined by SDS-PAGE reducing conditions.

**Phenomenon explanation:**

The possible reasons that the actual band size differs from the predicted are as follows:

1. Splice variants: Alternative splicing may create different sized proteins from the same gene.
2. Relative charge: The composition of amino acids may affects the charge of the protein.
3. Post-translational modification: Phosphorylation, glycosylation, methylation etc.
4. Post-translation cleavage: Many proteins are synthesized as pro-proteins, and then cleaved to give the active form.
5. Polymerization of the target protein: Dimerization, multimerization etc.

**[ USAGE ]**

Reconstitute in 10mM PBS (pH7.4) to a concentration of 0.1-1.0 mg/mL. Do not vortex.

**[ STORAGE AND STABILITY ]**

**Storage:** Avoid repeated freeze/thaw cycles.

Store at 2-8°C for one month.

Aliquot and store at -80°C for 12 months.

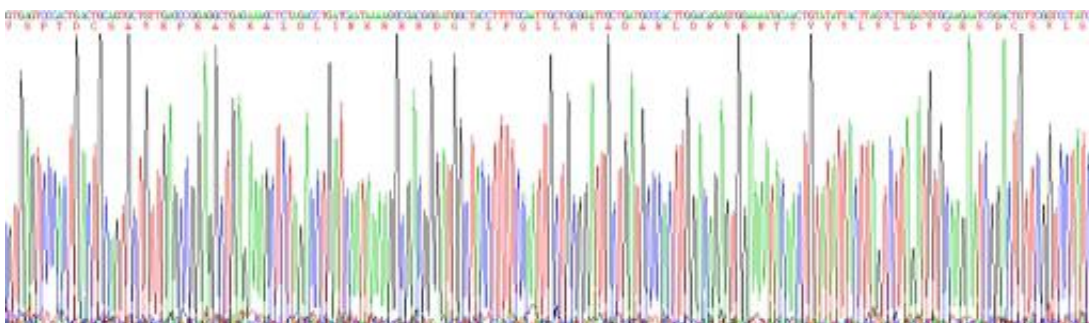
**Stability Test:** The thermal stability is described by the loss rate. The loss rate was determined by accelerated thermal degradation test, that is, incubate the protein at 37°C for 48h, and no obvious degradation and precipitation were observed. The loss rate is less than 5% within the expiration date under appropriate storage condition.

**[ SEQUENCE ]**

```

VS PTDCSAVEPE AEKALDLINK RRRDGYLFQL
LRIADAHDR VENTTVYYLV LDVQESDCSV LSRKYWDCV PPDSRRPSEI
VIGQCKVIAT RSHESQDLR VIDFNCTTSS VSSALANTKD SPVLIDFFED
TERYRKQANK ALEKYKEEND DFASFRVDRI ERVARVRGGE GTGYFVDFSV
RNCPRHHFPR HPNVFGFCRA DLFYDVEALD LESPKNLVIN CEVFDPEHE
NINGVPPHLG HPFHGGHER SSTTKPPFKP HGSRDHHPH KPHEHGPPP
PDERDHSHP PLPQGPPPL PMSCSSCQHA TFGTNGAQRH SHNNSSDLH
PHKHSHEQH PHGHHPAHH PHEHDTHRQH PHGHHPGH PHGHHPGH
PHGHHPCHD FQDYGPCDP PHNQGHCHG HGPPPGHLRR RGPKGPRPF
HCRQIGSVYR LPPLRKGEVL PLPEANFSP PLPHKHPLK PDNQFPQSV
SESCPGKFKS GFPQVSMFFT HTFPK
  
```

**[ IDENTIFICATION ]**



**Figure . Gene Sequencing (extract)**

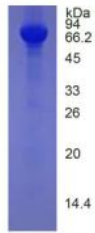


Figure. SDS-PAGE

**[ IMPORTANT NOTE ]**

The kit is designed for research use only, we will not be responsible for any issue if the kit was used in clinical diagnostic or any other procedures.