

**EPC534Mu61 100µg**  
**Eukaryotic Histidine Rich Glycoprotein (HRG)**  
**Organism Species: *Mus musculus* (Mouse)**  
***Instruction manual***

FOR RESEARCH USE ONLY  
NOT FOR USE IN CLINICAL DIAGNOSTIC PROCEDURES

---

13th Edition (Revised in Aug, 2023)

**[ PROPERTIES ]**

**Source:** Eukaryotic expression

**Host:** 293F Cell

**Residues:** Leu19~Lys525

**Tags:** N-terminal His Tag

**Subcellular Location:** Secreted

**Purity:** > 90%

**Traits:** Freeze-dried powder

**Buffer formulation:** PBS, pH7.4, containing 5% Trehalose .

**Original Concentration:** 200µg/mL

**Applications:** Positive Control; Immunogen; SDS-PAGE; WB.

(May be suitable for use in other assays to be determined by the end user.)

**Predicted isoelectric point:** 7.3

**Predicted Molecular Mass:** 58.9kDa

**Accurate Molecular Mass:** 75kDa as determined by SDS-PAGE reducing conditions.

**Phenomenon explanation:**

The possible reasons that the actual band size differs from the predicted are as follows:

1. Splice variants: Alternative splicing may create different sized proteins from the same gene.
2. Relative charge: The composition of amino acids may affect the charge of the protein.
3. Post-translational modification: Phosphorylation, glycosylation, methylation etc.
4. Post-translation cleavage: Many proteins are synthesized as pro-proteins, and then cleaved to give the active form.
5. Polymerization of the target protein: Dimerization, multimerization etc.

**[ USAGE ]**

Reconstitute in 10mM PBS (pH7.4) to a concentration of 0.1-1.0 mg/mL. Do not vortex.

**[ STORAGE AND STABILITY ]**

**Storage:** Avoid repeated freeze/thaw cycles.

Store at 2-8°C for one month.

Aliquot and store at -80°C for 12 months.

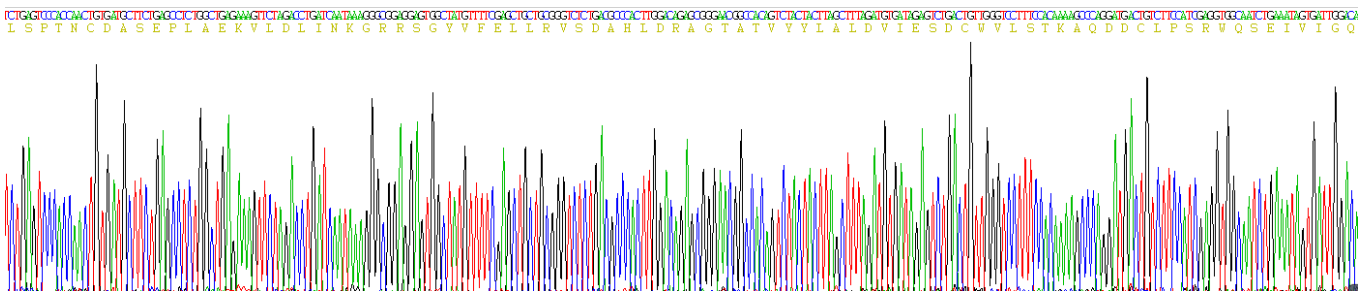
**Stability Test:** The thermal stability is described by the loss rate. The loss rate was determined by accelerated thermal degradation test, that is, incubate the protein at 37°C for 48h, and no obvious degradation and precipitation were observed. The loss rate is less than 5% within the expiration date under appropriate storage condition.

**[ SEQUENCE ]**

```

LS PTNCDA SEPL AEKVLD LINK GRRSGYVFEL
LRVSDAHLDR AGTATVYYLA LDVIESDCWV LSTKAQDDCL PSRWQSEIVI
GQCKVIATRY SNESQDLSVN GYNCTTSSVS SALRNTKDSP VLLDFFEDSE
LYRKQARKAL DKYKTDNGDF ASFRVERAER VIRARGGERT NYVVEFSMRN
CSTQHFRSP LVFGFCRALL SYSIETSDLE TPDSIDINCE VFNIEDHKDT
SDMKPHWGHE RPLCDKHLCK LSGSRDHHHT HKTDKLGCPP PPEGKDNSDR
PRLQEGALPQ LPPGYPPHSG ANRTHRPSYN HSCNEHPCHG HRPHGHHPHS
HHPGHHSHG HHPHGHHPHS HSHGHHPG HHPHGHHPHG HHPHGHHPHG
HHPHGHDFLD YGPCDPPSNS QELKGQYHRG YGPPHGHSRK RGP GKGLFPF
HHQIGYVYR LPPLNIGEV L TLPEANFPSF SLPNCNRS LQ PEIQPF PQT A
SRSCPGKFES EFPQISKFFG YTPPK
    
```

**[ IDENTIFICATION ]**



**Figure. Gene Sequencing (Extract)**

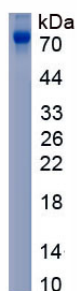


Figure. SDS-PAGE

**[ IMPORTANT NOTE ]**

The kit is designed for research use only, we will not be responsible for any issue if the kit was used in clinical diagnostic or any other procedures.