

**EPA563Hu61 10µg**

**Eukaryotic Interleukin 1 Beta (IL1b)**

**Organism Species: *Homo sapiens (Human)***

***Instruction manual***

FOR RESEARCH USE ONLY

NOT FOR USE IN CLINICAL DIAGNOSTIC PROCEDURES

---

12th Edition (Revised in Aug, 2016)

**[ PROPERTIES ]**

**Source:** Eukaryotic expression

**Host:** 293F cell

**Residues:** Ala117~Ser269

**Tags:** N-terminal His Tag

**Subcellular Location:** Secreted, Lysosome, Cytoplasm

**Purity:** > 95%

**Traits:** Freeze-dried powder

**Buffer formulation:** 20mM Tris, 150mM NaCl, pH8.0, containing 0.01% SKL, 5% Trehalose.

**Original Concentration:** 200µg/mL

**Applications:** Positive Control; Immunogen; SDS-PAGE; WB.

(May be suitable for use in other assays to be determined by the end user.)

**Predicted isoelectric point:** 5.9

**Predicted Molecular Mass:** 19.0kDa

**Accurate Molecular Mass:** 19kDa as determined by SDS-PAGE reducing conditions.

**[ USAGE ]**

Reconstitute in 20mM Tris, 150mM NaCl (pH8.0) to a concentration of 0.1-1.0 mg/mL. Do not vortex.

**[ STORAGE AND STABILITY ]**

**Storage:** Avoid repeated freeze/thaw cycles.

Store at 2-8°C for one month.

Aliquot and store at -80°C for 12 months.

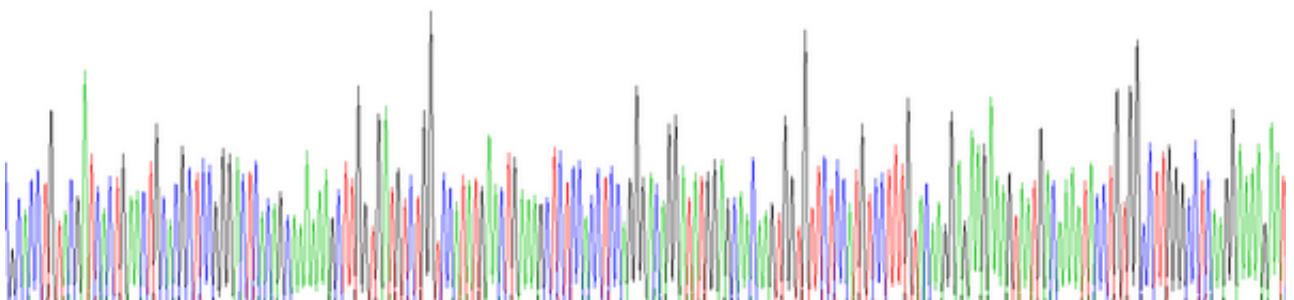
**Stability Test:** The thermal stability is described by the loss rate. The loss rate was determined by accelerated thermal degradation test, that is, incubate the protein at 37°C for 48h, and no obvious degradation and precipitation were observed. The loss rate is less than 5% within the expiration date under appropriate storage condition.

**[ SEQUENCE ]**

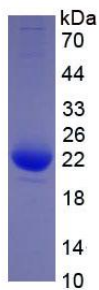
APVR SLNCTLRDSQ QKSLVMSGPY ELKALHLQGG  
 DMEQQVVFSM SFVQGEESND KIPVALGLKE KNLYLSCVLK DDKPTLQLES  
 VDPKNYPKKK MEKRFVFNKI EINNKLFEFES AQFPNWIYST SQAENMPVFL  
 GGTKGGQDIT DFTMQFVSS

**[ IDENTIFICATION ]**

TGACGCTG TGGGATGCTG AAC TGGAGC TGGGGG K TGCAGC GAAAGC TGG TGA TGC TGG TCGA TATGACT GAAAGC TCGAC TCGGG K AGGAT TGGAGC GAGTGGG TCGCTG TCGCTT TGGAGG GAGAGAGTAA TGC AAT TACTG TGGCT TGGGCT TCGAGAGAT  
 A T T K S L S C T L R S S Q K S L Y K S G Y T E K A L S L Q G D E E Q Q V Y F S H S Y Y Q G E S K D R I P Y A L G L K E K S I



**Figure. Gene Sequencing (Extract)**



**Figure. SDS-PAGE**

**[ IMPORTANT NOTE ]**

The kit is designed for research use only, we will not be responsible for any issue if the kit was used in clinical diagnostic or any other procedures.