

**EPA056Ra61 10µg**  
**Eukaryotic Interleukin 10 (IL10)**  
**Organism Species: *Rattus norvegicus* (Rat)**  
***Instruction manual***

FOR RESEARCH USE ONLY  
NOT FOR USE IN CLINICAL DIAGNOSTIC PROCEDURES

---

12th Edition (Revised in Aug, 2016)

**[ PROPERTIES ]**

**Source:** Eukaryotic expression

**Host:** 293F cell

**Residues:** Ser19~Asn178

**Tags:** N-terminal His Tag

**Subcellular Location:** Secreted

**Purity:** > 90%

**Traits:** Freeze-dried powder

**Buffer formulation:** PBS, pH7.4, containing 5% Trehalose.

**Original Concentration:** 60µg/mL

**Applications:** Positive Control; Immunogen; SDS-PAGE; WB.

(May be suitable for use in other assays to be determined by the end user.)

**Predicted isoelectric point:** 8.8

**Predicted Molecular Mass:** 20.3kDa

**Accurate Molecular Mass:** 22kDa as determined by SDS-PAGE reducing conditions.

**[ USAGE ]**

Reconstitute in ddH<sub>2</sub>O to a concentration of 0-0.5 mg/mL. Do not vortex.

**[ STORAGE AND STABILITY ]**

**Storage:** Avoid repeated freeze/thaw cycles.

Store at 2-8°C for one month.

Aliquot and store at -80°C for 12 months.

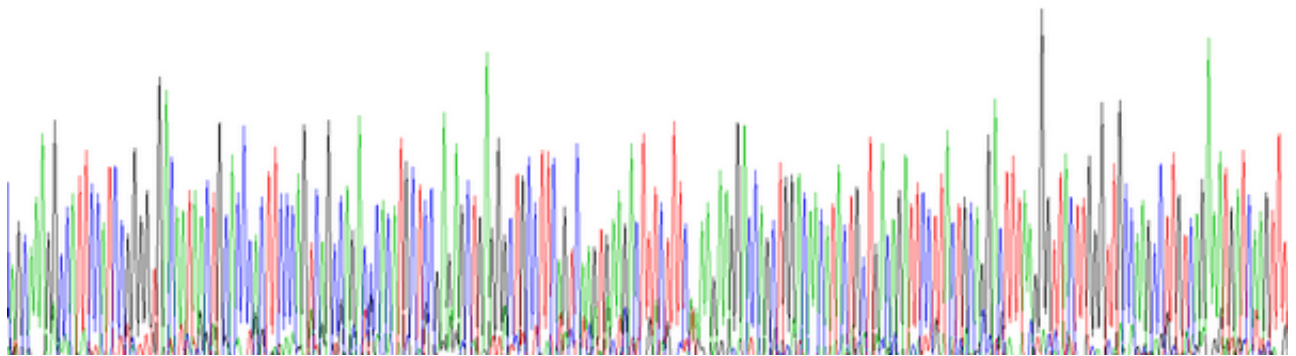
**Stability Test:** The thermal stability is described by the loss rate. The loss rate was determined by accelerated thermal degradation test, that is, incubate the protein at 37°C for 48h, and no obvious degradation and precipitation were observed. The loss rate is less than 5% within the expiration date under appropriate storage condition.

**[ SEQUENCE ]**

SK GHSIRGDNNC THFPVSQTHM LRELRAAFSQ  
 VKTFFQKKDQ LDNILLTDSL LQDFKGYLGC QALSEMIKFY LVEVMPQAEN  
 HGPEIKEHLN SLGEKLTW IQLRRCHRFL PCENKSKAVE QVKNDFNKLQ  
 DKGVIKAMNE FDIFINCIEA YVTLKMKM

**[ IDENTIFICATION ]**

ATGAGGGGCAATGAGTGGGGGGTGAAGGAACTGGAGGCTTCCGGTGCAGCGAGGCGCATGCTGGAGACTGAGGCTGCTGGTCAAGTGAAGCTTTCTTAAAGAGGGGCGCTGGACACATCTCTGACGATCTTCTGAGGACTTAAAGGATCTTGGATGGCAGGCTTGGAGATGAGCTT  
 S K G H S I R G D N N C T H F P V S Q T H M L R E L R A A F S Q V K T F F Q K K D Q I D N I L L T D S L L Q D F K G Y L G C Q A L S E M I K F Y



**Figure . Gene Sequencing (extract)**

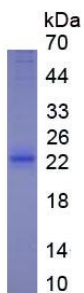


Figure. SDS-PAGE

**[ IMPORTANT NOTE ]**

The kit is designed for research use only, we will not be responsible for any issue if the kit was used in clinical diagnostic or any other procedures.