

EPD762Hu41 100µg

Eukaryotic Kynureninase (KYNU)

Organism Species: *Homo sapiens (Human)*

Instruction manual

FOR RESEARCH USE ONLY

NOT FOR USE IN CLINICAL DIAGNOSTIC PROCEDURES

12th Edition (Revised in Aug, 2016)

[PROPERTIES]

Source: Eukaryotic expression

Host: 293F cell

Residues: Met1~Asn465

Tags: N-terminal His Tag

Subcellular Location: Cytoplasm

Purity: > 95%

Traits: Freeze-dried powder

Buffer formulation: 20mM Tris, 150mM NaCl, pH8.0, containing 0.01% SKL, 5% Trehalose.

Original Concentration: 50µg/mL

Applications: Positive Control; Immunogen; SDS-PAGE; WB.

(May be suitable for use in other assays to be determined by the end user.)

Predicted isoelectric point: 7.0

Predicted Molecular Mass: 55.5kDa

Accurate Molecular Mass: 56kDa as determined by SDS-PAGE reducing conditions.

[USAGE]

Reconstitute in ddH₂O to a concentration of 0-0.5 mg/mL. Do not vortex.

[STORAGE AND STABILITY]

Storage: Avoid repeated freeze/thaw cycles.

Store at 2-8°C for one month.

Aliquot and store at -80°C for 12 months.

Stability Test: The thermal stability is described by the loss rate. The loss rate was determined by accelerated thermal degradation test, that is, incubate the protein at 37°C for 48h, and no obvious degradation and precipitation were observed. The loss rate is less than 5% within the expiration date under appropriate storage condition.

[SEQUENCE]

MEPSSLELPA DTVQRIAAEL KCHPTDERVA LHLDEEDKLR HFRECFYIPK
 IQDLPPVDLS LVNKDENAIY FLGNSLGLQP KMKTYLEEE LDKWAKIAAY
 GHEVGKRPWI TGDESIVGLM KDIVGANEKE IALMNALTVN LHLLMLSFFK
 PTPKRYKILL EAKAFPSDHY AIESQLQLHG LNIEESMRMI KPREGEETLR
 IEDILEVIEK EGDSIAVILF SGVHFYTGQH FNIPAITKAG QAKGCYVGFD
 LAHAVGNVEL YLHDWGVDF AWC SYKYLNA GAGGIAGAFI HEKHAHTIKP
 ALVGWFGHEL STRFKMDNKL QLIPGVCGR ISNPPILLVC SLHASLEIFK
 QATMKALRKK SVLLTGYLEY LIKHNYGKDK AATKKPVVNI ITPSHVEERG
 CQLTITFSVP NKDVVFQELEK RGVVCDKRN NGIRVAPVPL YNSFHDVYKF
 TNLTSILDS AETKN

[IDENTIFICATION]

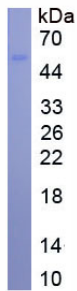


Figure. SDS-PAGE

[IMPORTANT NOTE]

The kit is designed for research use only, we will not be responsible for any issue if the kit was used in clinical diagnostic or any other procedures.