

EPC974Hu61 50µg

Eukaryotic Microtubule Associated Protein 7 (MAP7)

Organism Species: *Homo sapiens (Human)*

Instruction manual

FOR RESEARCH USE ONLY

NOT FOR USE IN CLINICAL DIAGNOSTIC PROCEDURES

12th Edition (Revised in Aug, 2016)

[PROPERTIES]

Source: Eukaryotic expression

Host: 293F

Residues: Glu414~Ile749

Tags: N-terminal His Tag

Subcellular Location: Secreted

Purity: > 95%

Traits: Freeze-dried powder

Buffer formulation: PBS, pH7.4, containing 5% Trehalose.

Original Concentration: 80µg/mL

Applications: Positive Control; Immunogen; SDS-PAGE; WB.

(May be suitable for use in other assays to be determined by the end user.)

Predicted isoelectric point: 5.2

Predicted Molecular Mass: 39.1kDa

Accurate Molecular Mass: 77kDa as determined by SDS-PAGE reducing conditions.

Phenomenon explanation:

The possible reasons that the actual band size differs from the predicted are as follows:

1. Splice variants: Alternative splicing may create different sized proteins from the same gene.
2. Relative charge: The composition of amino acids may affect the charge of the protein.
3. Post-translational modification: Phosphorylation, glycosylation, methylation etc.
4. Post-translation cleavage: Many proteins are synthesized as pro-proteins, and then cleaved to give the active form.
5. Polymerization of the target protein: Dimerization, multimerization etc.

[USAGE]

Reconstitute in ddH₂O to a concentration of 0.1-0.5 mg/mL. Do not vortex.

[STORAGE AND STABILITY]

Storage: Avoid repeated freeze/thaw cycles.

Store at 2-8°C for one month.

Aliquot and store at -80°C for 12 months.

Stability Test: The thermal stability is described by the loss rate. The loss rate was determined by accelerated thermal degradation test, that is, incubate the protein at 37°C for 48h, and no obvious degradation and precipitation were observed. The loss rate is less than 5% within the expiration date under appropriate storage condition.

[**SEQUENCE**]

```
ERTPAEP  EVGPAAPAMA  PAPASAPAPA  SAPAPAPVPT  PAMVSAPSST  VNASASVKTS  AGTTDPEEAT  RLLAEKRRLA  
REQREKEERE  RREQEELERQ  KREELAQRVA  EERTTRREEE  SRRLEAEQAR  EKEEQLQRQA  EERALREREE  AERAQRQKEE  
EARVREEAER  VRQEREKHFQ  REEQERLERK  KRLEEIMKRT  RRTEATDKKT  SDQRNGDIAK  GALTGGTEVS  ALPCTTNAPG  
NGKPVGSPHV  VTSHQSKVTV  ESTPDLEKQP  NENGVSVQNE  NFEEIINLPI  GSKPSRLDVT  NSESPEIPLN  PILAFDDEGT  
LGPLPQVDGV  QTQQTAEVI
```

[**IDENTIFICATION**]

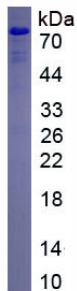


Figure. SDS-PAGE

[**IMPORTANT NOTE**]

The kit is designed for research use only, we will not be responsible for any issue if the kit was used in clinical diagnostic or any other procedures.