

**EPG678Hu61 10µg**

**Eukaryotic Mitotic Centromere Associated Kinesin (MCAK)**

**Organism Species: *Homo sapiens (Human)***

***Instruction manual***

FOR RESEARCH USE ONLY

NOT FOR USE IN CLINICAL DIAGNOSTIC PROCEDURES

---

13th Edition (Revised in Aug, 2023)

**[ PROPERTIES ]**

**Source:** Eukaryotic expression

**Host:** 293F cell

**Residues:** Ala2~Gln725

**Tags:** N-terminal His Tag

**Subcellular Location:** Nucleus, Cytoplasm, Chromosome

**Purity:** > 95%

**Traits:** Freeze-dried powder

**Buffer formulation:** PBS, pH7.4, containing 0.01% SKL, 5% Trehalose .

**Original Concentration:** 200µg/mL

**Applications:** Positive Control; Immunogen; SDS-PAGE; WB.

(May be suitable for use in other assays to be determined by the end user.)

**Predicted isoelectric point:** 7.9

**Predicted Molecular Mass:** 82.8kDa

**Accurate Molecular Mass:** 83kDa as determined by SDS-PAGE reducing conditions.

**[ USAGE ]**

Reconstitute in ddH<sub>2</sub>O to a concentration of 0.1-0.5 mg/mL. Do not vortex.

**[ STORAGE AND STABILITY ]**

**Storage:** Avoid repeated freeze/thaw cycles.

Store at 2-8°C for one month.

Aliquot and store at -80°C for 12 months.

**Stability Test:** The thermal stability is described by the loss rate. The loss rate was determined by accelerated thermal degradation test, that is, incubate the protein at 37°C for 48h, and no obvious degradation and precipitation were observed. The loss rate is less than 5% within the expiration date under appropriate storage condition.

**[ SEQUENCE ]**

```

AMDSSLQARL  FPGLAIKIQR  SNGLIHSANV  RTVNLEKSCV  SVEWAEGGAT  KGKEIDFDDV
AAINPELLQL  LPLHPKDNLPL  LQENVTIQKQ  KRRSVNSKIP  APKESLRSRS  TRMSTVSELR
ITAQENDMEV  ELPAAANSRK  QFSVPPAPTR  PSCPAVAEIP  LRMVSEEMEE  QVHSIRGSSS
ANPVNSVRRK  SCLVKEVEKM  KNKREEKKAQ  NSEMRMKRAQ  EYDSSFPNWE  FARMIKEFRA
TLECHPLTMT  DPIEEHRICV  CVRKRPLNKQ  ELAKKEIDVI  SIPSKCLLLV  HEPKCLKVDT
KYLENQAFCF  DFAFDETASN  EVVYRFTARP  LVQTIPEGGK  ATCFAYGQTG  SGKTHTMGGD
LSGKAQNASK  GIYAMASRDV  FLLKNQPCYR  KLGLEVYVTF  FEIYNGKLPD  LLNKKAKLRV
LEDGKQQVQV  VGLQEHLVNS  ADDVIKMIDM  GSACRTSGQT  FANSNSSRSH  ACFQIILRAK
GRMHGKFSLV  DLAGNERGAD  TSSADRQTRM  EGAEINKSLL  ALKECIRALG  QNKAHTPFRE
SKLTQVLRDS  FIGENSRTCMT  IATISPGISS  CEYTLNTRY  ADRVKELSPH  SGPSGEQLIQ
METEEMEACS  NGALIPGNLS  KEEBELSSQM  SSFNEAMTQI  RELEEKAMEE  LKEIIQQGPD
WLELSEMTEQ  PDYDLETQVN  KAESALAQQA  KHFSALRDVI  KALRLAMQLE  EQASRQISSK
KRPQ

```

**[ IDENTIFICATION ]**

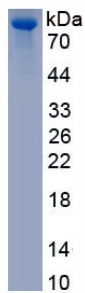


Figure. SDS-PAGE

**[ IMPORTANT NOTE ]**

The kit is designed for research use only, we will not be responsible for any issue if the kit was used in clinical diagnostic or any other procedures.