

**EPA692Hu61 100µg**

**Eukaryotic Neuropilin 1 (NRP1)**

**Organism Species: *Homo sapiens (Human)***

***Instruction manual***

FOR RESEARCH USE ONLY

NOT FOR USE IN CLINICAL DIAGNOSTIC PROCEDURES

---

12th Edition (Revised in Aug, 2016)

**[ PROPERTIES ]**

**Source:** Eukaryotic expression

**Host:** 293F cell

**Residues:** Cys27~Asp444

**Tags:** N-terminal His Tag

**Subcellular Location:** Secreted

**Purity:** > 95%

**Traits:** Freeze-dried powder

**Buffer formulation:** PBS, pH7.4, containing 0.01% SKL, 1mM DTT, 5% Trehalose and Proclin300.

**Original Concentration:** 200µg/mL

**Applications:** Positive Control; Immunogen; SDS-PAGE; WB.

(May be suitable for use in other assays to be determined by the end user.)

**Predicted isoelectric point:** 4.9

**Predicted Molecular Mass:** 48.6kDa

**Accurate Molecular Mass:** 60kDa as determined by SDS-PAGE reducing conditions.

**Phenomenon explanation:**

The possible reasons that the actual band size differs from the predicted are as follows:

1. Splice variants: Alternative splicing may create different sized proteins from the same gene.
2. Relative charge: The composition of amino acids may affect the charge of the protein.
3. Post-translational modification: Phosphorylation, glycosylation, methylation etc.
4. Post-translation cleavage: Many proteins are synthesized as pro-proteins, and then cleaved to give the active form.
5. Polymerization of the target protein: Dimerization, multimerization etc.

**[ USAGE ]**

Reconstitute in 10mM PBS (pH7.4) to a concentration of 0.1-1.0 mg/mL. Do not vortex.

**[ STORAGE AND STABILITY ]**

**Storage:** Avoid repeated freeze/thaw cycles.

Store at 2-8°C for one month.

Aliquot and store at -80°C for 12 months.

**Stability Test:** The thermal stability is described by the loss rate. The loss rate was determined by accelerated thermal degradation test, that is, incubate the protein at 37°C for 48h, and no obvious degradation and precipitation were observed. The loss rate is less than 5% within the expiration date under appropriate storage condition.

**[ SEQUENCE ]**

			CGDT	IKIESPGYLT	SPGYPHSYHP
SEKCEWLIQA	PDPYQRIMIN	FNPFDLEDR	DCKYDYVEVF	DGENENGHFR	
GKFCGKIAPP	PVVSSGPFLF	IKFVSDYETH	GAGFSIRYEI	FKRGPECSQN	
YTTPSGVIKS	PGFPEKYPNS	LECTYIVFVP	KMSEIILEFE	SFDLEPDSNP	
PGGMFCRYDR	LEIWDGFDPV	GPHIGRYCGQ	KTPGRIRSSS	GILSMVFYTD	
SAIAKEGFS	NYSVLQSSVS	EDFKCMEALG	MESGEIHSQ	ITASSQYSTN	
WSAERSRLNY	PENGWTPGED	SYREWIQVDL	GLLRFVTAVG	TQGAISKETK	
KKYYVKTYKI	DVSSNGEDWI	TIKEGNKPV	FQGNTNPTDV	VVAVFPKPLI	
TRFVRIKPAT	WETGISMRF	VYGCKITDYP	CSGMLGMVSG	LISD	

**[ IDENTIFICATION ]**

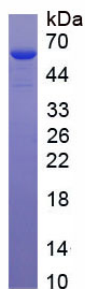


Figure. SDS-PAGE

**[ IMPORTANT NOTE ]**

The kit is designed for research use only, we will not be responsible for any issue if the kit was

used in clinical diagnostic or any other procedures.