

**EPB030Hu61 100µg**

**Eukaryotic Protein Tyrosine Phosphatase Receptor Type C (CD45)**

**Organism Species: *Homo sapiens (Human)***

***Instruction manual***

FOR RESEARCH USE ONLY

NOT FOR USE IN CLINICAL DIAGNOSTIC PROCEDURES

---

12th Edition (Revised in Aug, 2016)

**[ PROPERTIES ]**

**Source:** Eukaryotic expression

**Host:** 293F cell

**Residues:** Gln26~Lys463

**Tags:** C-terminal His Tag

**Subcellular Location:** Membrane

**Purity:** > 95%

**Traits:** Freeze-dried powder

**Buffer formulation:** 20mM Tris, 150mM NaCl, pH8.0, containing 0.01% SKL, 5% Trehalose.

**Original Concentration:** 200µg/mL

**Applications:** Positive Control; Immunogen; SDS-PAGE; WB.

(May be suitable for use in other assays to be determined by the end user.)

**Predicted isoelectric point:** 6.8

**Predicted Molecular Mass:** 50.6kDa

**Accurate Molecular Mass:** 51kDa as determined by SDS-PAGE reducing conditions.

**[ USAGE ]**

Reconstitute in 20mM Tris, 150mM NaCl (pH8.0) to a concentration of 0.1-1.0 mg/mL. Do not vortex.

**[ STORAGE AND STABILITY ]**

**Storage:** Avoid repeated freeze/thaw cycles.

Store at 2-8°C for one month.

Aliquot and store at -80°C for 12 months.

**Stability Test:** The thermal stability is described by the loss rate. The loss rate was determined by accelerated thermal degradation test, that is, incubate the protein at 37°C for 48h, and no obvious degradation and precipitation were observed. The loss rate is less than 5% within the expiration date under appropriate storage condition.

**[ SEQUENCE ]**

```

                QSPTP SPTGVSSVQT PHLPTHADSQ
TPSAGTDTQT FSGSAANAKL NPTPGSNAIS DAYLNASETT TLSPSGSAVI
STTTIATTPS KPTCDEKYAN ITVDYLYNKE TKLFTAKLNV NENVECGNNT
CTNNEVHHLT ECKNASVSIS HNSCTAPDKT LILDVPPGVE KFQLHDCTQV
EKADTTICKL WKNIETFTCD TQNITYRFQC GNMIFDNKEI KLENLEPEHE
YKCDSEILYN NHKFTNASKI IKTDFGSPGE PQIIFCRSEA AHQGVITWNP
PQRSFHNFTL CYIKETEKDC LNLDKNLIKY DLQNLKPYTK YVLSLHAYII
AKVQRNGSAA MCHFTTKSAP PSQVWNMTVS MTSDNSMHVK CRPPRDRNGP
HERYHLEVEA GNTLVRNESH KNCDFRVKDL QYSTDYTFKA YFHNGDYPGE
PFILHHSTSY NSK
    
```

**[ IDENTIFICATION ]**

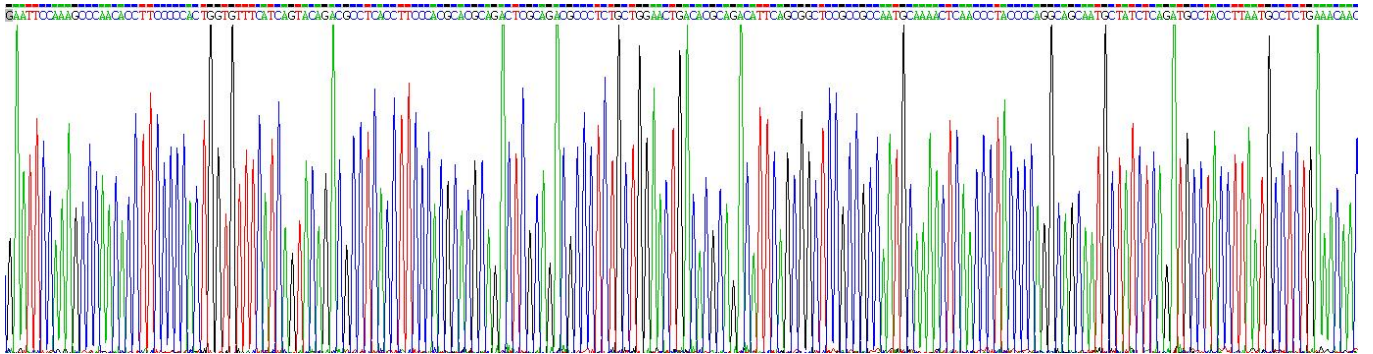


Figure . Gene Sequencing (extract)

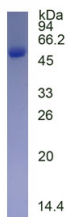


Figure. SDS-PAGE

**[ IMPORTANT NOTE ]**

The kit is designed for research use only, we will not be responsible for any issue if the kit was used in clinical diagnostic or any other procedures.