

EPA120Po61 100ug

Eukaryotic Stem Cell Factor (SCF)

Organism Species: *Sus scrofa*; Porcine (Pig)

Instruction manual

FOR IN VITRO USE AND RESEARCH USE ONLY

NOT FOR USE IN CLINICAL DIAGNOSTIC PROCEDURES

11th Edition (Revised in May, 2016)

[PROPERTIES]

Source: Eukaryotic expression.

Host: 293F cell

Residues: Thr25~Ala191

Tags: N-terminal His Tag

Homology: Mouse 81%, rat 82%

Subcellular Location: Secreted. Cell membrane. Membrane.

Purity: >95%

Endotoxin Level: <1.0EU per 1µg (determined by the LAL method).

Traits: Freeze-dried powder

Buffer Formulation: 20mM Tris, 150mM NaCl, pH8.0, containing 1mM EDTA, 1mM DTT, 5%Trehalose and Proclin300.

Original Concentration: 200ug/mL

Predicted isoelectric point: 5.3

Predicted Molecular Mass: 20.4kDa

Accurate Molecular Mass: 20.4kDa as determined by SDS-PAGE reducing conditions.

Applications: SDS-PAGE; WB; ELISA; IP; CoIP; EMSA; Reporter Assays; Purification; Amine Reactive Labeling.

(May be suitable for use in other assays to be determined by the end user.)

[USAGE]

Reconstitute in 20mM Tris, 150mM NaCl (pH8.0) to a concentration of 0.1-1.0 mg/mL. Do not vortex

[STORAGE AND STABILITY]

Storage: Avoid repeated freeze/thaw cycles.

Store at 2-8°C for one month.

Aliquot and store at -80°C for 12 months.

Stability Test: The thermal stability is described by the loss rate. The loss rate was determined by accelerated thermal degradation test, that is, incubate the protein at 37°C for 48h, and no obvious degradation and precipitation were observed. The loss rate is less than 5% within the expiration date under appropriate storage condition.

[SEQUENCE]

```
TQGICR NRVTDDVKDV TKLVANLPKD  
YKITLKYVPG MDVLP SHCWI SEMVEQLSVS LTDLLDKFSN ISEGLSNYSI  
IDKLVKIVDD LVECMEHSF ENVKSSKSP EPRLFTPEKF FGIFNRSIDA  
FKDLEMVAPK TSECVISSTL TPEKDSRVSV TKPFMLPPVA A
```

[IDENTIFICATION]

```
2CTCAGGGATCTCGAGGACCTGTGCACTGATGATGTGAAAGAGCTTACAAAATTGTGTGCAAATCTTCGAAAGACTATAGACTAGCCTCAATAATGTCCGCGGGATGGAGGTTTGTGCTAGTCATGTTGGATAGCGGAAATGGTGGACCAACTGTGTGTCAGCTTGACTGATCTTCGACAAAGTTTTCGAAATATTTCT  
T Q G I C R N R V T D D V K D V T K L V A N L P K D Y K I T L K Y V P G R D V L P S H C W I S E M V E Q L S V S L T D L L D K F S N I S
```

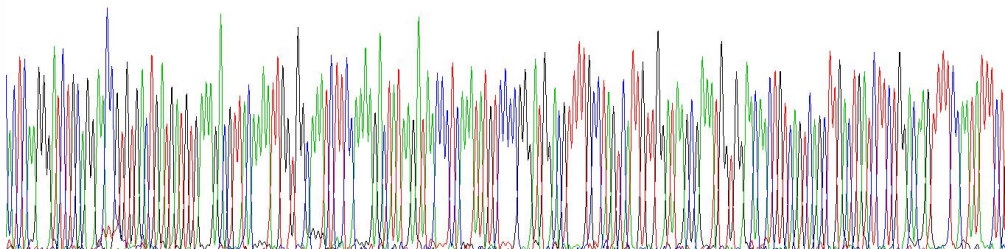


Figure 1. Gene Sequencing (extract)



Figure 2. SDS-PAGE