

EPB039Ra61 100µg

Eukaryotic Surfactant Associated Protein D (SPD)

Organism Species: *Rattus norvegicus* (Rat)

Instruction manual

FOR RESEARCH USE ONLY

NOT FOR USE IN CLINICAL DIAGNOSTIC PROCEDURES

12th Edition (Revised in Aug, 2016)

[PROPERTIES]

Source: Eukaryotic expression

Host: CHOS

Residues: Ala20~Phe374

Tags: N-terminal His Tag

Subcellular Location: Secreted

Purity: > 95%

Traits: Freeze-dried powder

Buffer formulation: PBS, pH7.4, containing 0.01% SKL, 1mM DTT, 5% Trehalose and Proclin300.

Original Concentration: 200µg/mL

Applications: Positive Control; Immunogen; SDS-PAGE; WB.

(May be suitable for use in other assays to be determined by the end user.)

Predicted isoelectric point: 7.7

Predicted Molecular Mass: 37.1kDa

Accurate Molecular Mass: 46kDa as determined by SDS-PAGE reducing conditions.

Phenomenon explanation:

The possible reasons that the actual band size differs from the predicted are as follows:

1. Splice variants: Alternative splicing may create different sized proteins from the same gene.
2. Relative charge: The composition of amino acids may affect the charge of the protein.
3. Post-translational modification: Phosphorylation, glycosylation, methylation etc.
4. Post-translation cleavage: Many proteins are synthesized as pro-proteins, and then cleaved to give the active form.
5. Polymerization of the target protein: Dimerization, multimerization etc.

[USAGE]

Reconstitute in 10mM PBS (pH7.4) to a concentration of 0.1-1.0 mg/mL. Do not vortex.

[STORAGE AND STABILITY]

Storage: Avoid repeated freeze/thaw cycles.

Store at 2-8°C for one month.

Aliquot and store at -80°C for 12 months.

Stability Test: The thermal stability is described by the loss rate. The loss rate was determined by accelerated thermal degradation test, that is, incubate the protein at 37°C for 48h, and no obvious degradation and precipitation were observed. The loss rate is less than 5% within the expiration date under appropriate storage condition.

[SEQUENCE]

```

          A EMKTLNQRSI TNTCTLVLCN PTENGLPGRD
GRDQREGPRG EKGDPGLPGP MGLSGLPGPR GPVGPKEGNG SAGEPGPKGE
RGLVGPPGSP GISGPAGKEG PSGKQGNIGP QGKPGPKGEA GPKGEVGAPG
MQGSAGAKGP AGPKGERGAP GEQGAPGNAG AAGPAGPAGP QGAPGSRGPP
GLKGDRGAPG DRGIKGESGL PDSAALRQQM EALNGKLQRL EAAFSRYKKA
ALFPDQQSVG DKIFRAANSE EPFEDAKEMC RQAGGQLASP RSATENAAVQ
QLVTAHAKAA FLSMTDVGTE GKFTYPTGEA LVYSNWAPGE PNNNGGAENC
VEIFTNGQWN DKACGEQRLV ICEF
    
```

[IDENTIFICATION]

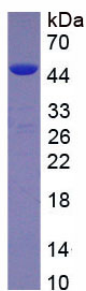


Figure. SDS-PAGE

[IMPORTANT NOTE]

The kit is designed for research use only, we will not be responsible for any issue if the kit was

used in clinical diagnostic or any other procedures.