

PAA685Ra81

FITC-Linked Antibody to ClusterOfDifferentiation14(CD14)

Organism: *Rattus norvegicus* (Rat)

*Instruction manual*

FOR IN VITRO USE AND RESEARCH USE ONLY  
NOT FOR USE IN CLINICAL DIAGNOSTIC PROCEDURES

9th Edition (Revised in Jul, 2013)

## [ PRODUCT INFORMATION ]

**Immunogen:** CD14, Rat

**Clonality:** Polyclonal

**Conjugation:** FITC

**Host:** Rabbit

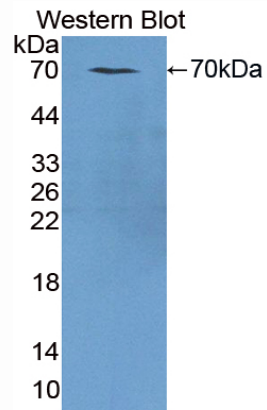
**Immunoglobulin Type:** IgG

**Purification:** Affinity Chromatography.

**Applications:** WB, ICC, IHC-P, IHC-F, ELISA

**Concentration:** 200µg/mL

**UOM:** 100µg



Sample: Recombinant CD14, Rat

## [ IMMUNOGEN INFORMATION ]

**Immunogen:** Recombinant CD14 (Ser18~Val372) expressed in *E.coli*.

**Accession No.:** RPA685Ra01

**Sequence:** The target protein is fused with two N-terminal Tags, His-tag and GST-tag and its sequence is listed below.

MSPILGYWKI KGLVQPTRL L LEYLEEKYEE HLYERDEGDK WRNKKFELGL EFPNLPYYID  
GDVKLTQSMA IIRYIADKHN MLGGCPKERA EISMLEGAVL DIRYGVSR IA YSKDFETLKV  
DFLSKLP EML KMFEDRLCHK TYLNGDHVTH PDFMLYDALD VVLYMDPMCL DAFPKLVCFK  
KRIEAIQID KYLKSSKYIA WPLQG WQATF GGDHPPKSD GSTSGSGHHH HHSAGLVPR  
GSTAIGMKET AAKFERQHM DSPDLGTLEV LFQGPLGS-SPA TPEPCELDQD  
EESVRCYCNF SDPQPNWSSA FLCAGAEDVE FYGGGRSLEY LLKRV DTEAN LGQYTDIIRS  
LPLKRLTVRS ARVPTQILFG TLRVLGYSGL RELTLENLEV TGTALSPLLD ATGPDNLNTLS  
LRNVSWATTD TWLAELQQWL KPGLKVLSIA QAHS LNFSCK QVGVFPALAT LDLSDNPELG

EKGLISALCP HKFPTLQVLA LRNAGMETTS GVCSALAAAR VPLQALDL SH NSLRDTAGTP  
SCDWPSQLNS LNLSFTGLEH VPKGLPAKLS VLDLSYNRLD RKPRPEELPE VGSLSLTGPN  
FLHSESQSEA YNSGVVIATA LSPGSAGLSG TLALLLGHRL FV

## **[ ANTIBODY SPECIFICITY ]**

The antibody is a rabbit polyclonal antibody raised against CD14. It has been selected for its ability to recognize CD14 in immunohistochemical staining and western blotting.

## **[ APPLICATIONS ]**

Western blotting: 1:50-400

Immunocytochemistry in formalin fixed cells: 1:50-500

Immunohistochemistry in formalin fixed frozen section: 1:50-500

Immunohistochemistry in paraffin section: 1:10-100

Enzyme-linked Immunosorbent Assay: 1:100-200

Optimal working dilutions must be determined by end user.

## **[ CONTENTS ]**

**Form & Buffer:** Supplied as solution form in PBS, pH7.4, containing 0.02% NaN<sub>3</sub>, 50% glycerol.

## **[ STORAGE ]**

Store at 4°C for frequent use. Stored at -20°C to -80°C in a manual defrost freezer for one year without detectable loss of activity. Avoid repeated freeze-thaw cycles.

**Note:** *As fluorescence can photobleach when exposed to light, so the antibody must be protected from light.*