

PAB867Hu81

FITC-Linked Antibody to Epidermal Growth Factor Receptor 2 (EGFR2)

Organism Species: Homo sapiens (Human)

Instruction manual

FOR IN VITRO USE AND RESEARCH USE ONLY

NOT FOR USE IN CLINICAL DIAGNOSTIC PROCEDURES

9th Edition (Revised in Jul, 2013)

[PRODUCT INFORMATION]

Immunogen: EGFR2, Human

Clonality: Polyclonal

Conjugation: FITC

Host: Rabbit

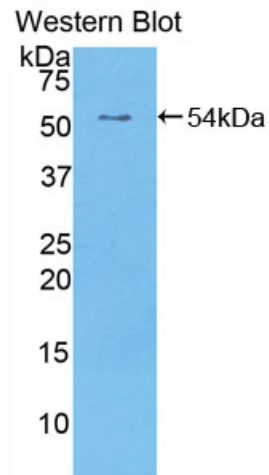
Immunoglobulin Type: IgG

Purification: Affinity Chromatography.

Applications: WB, ICC, IHC-P, IHC-F, ELISA

Concentration: 200µg/mL

UOM: 100µg



Sample: Recombinant EGFR2, Human

[IMMUNOGEN INFORMATION]

Immunogen: Recombinant EGFR2 (Phe376~Gly578) expressed in *E.coli*.

Accession No.: RPB867Hu01

Sequence: The target protein is fused with two N-terminal Tags, His-tag and GST-tag and its sequence is listed below.

MSPILGYWKI KGLVQPTRL L LEYLEEKYEE HLYERDEGDK WRNKKFELGL EFPNLPYYID
GDVKLTQSMA IIRYIADKHN MLGGCPKERA EISMLEGAVL DIRYGVSRIA YSKDFETLKV
DFLSKLP EML KMFEDRLCHK TYLNGDHVTH PDFMLYDALD VVLYMDPMCL DAFPKLVCFK
KRIEAIQID KYLKSSKYIA WPLQG WQATF GGGDHPKSD GSTSGSGHHH HHSAGLVPR

GSTAIGMKET AAAKFERQHM DSPDLGTLEV LFQGPLGS- FLPES FDGD PASNTA
PLQPEQLQVF ETLEEITGYL YISAWPDSL P DLSVFQNLQV IRGRILHNGA YSLTLQGLGI
SWLGLRSLRE LGSGLALIH NTHLCFVHTV PWDQLFRNPH QALLHTANRP EDECVGEGLA
CHQLCARGHC WPGPPTQCVN CSQFLRGQEC VEECRVLQGL PREYVNARHC
LPCHPECQPQ NGSVTCFG

[ANTIBODY SPECIFICITY]

The antibody is a rabbit polyclonal antibody raised against EGFR2. It has been selected for its ability to recognize EGFR2 in immunohistochemical staining and western blotting.

[APPLICATIONS]

Western blotting: 1:100-400

Immunocytochemistry in formalin fixed cells: 1:100-500

Immunohistochemistry in formalin fixed frozen section: 1:100-500

Immunohistochemistry in paraffin section: 1:50-200

Enzyme-linked Immunosorbent Assay: 1:100-200

Optimal working dilutions must be determined by end user.

[CONTENTS]

Form & Buffer: Supplied as solution form in PBS, pH7.4, containing 0.02% NaN₃, 50% glycerol.

[STORAGE]

Store at 4°C for frequent use. Stored at -20°C to -80°C in a manual defrost freezer for one year without detectable loss of activity. Avoid repeated freeze-thaw cycles.

Note: *As fluorescence can photobleach when exposed to light, so the antibody must be protected from light.*