

**PAB995Hu81**

**FITC-linked Antibody to Hemojuvelin (HJV)**

**Organism Species: Homo sapiens (Human)**

***Instruction manual***

FOR IN VITRO USE AND RESEARCH USE ONLY  
NOT FOR USE IN CLINICAL DIAGNOSTIC PROCEDURES

9th Edition (Revised in Jul, 2013)

## **[ PRODUCT INFORMATION ]**

**Immunogen:** HJV, Human

**Clonality:** Polyclonal

**Conjugation:** FITC

**Host:** Rabbit

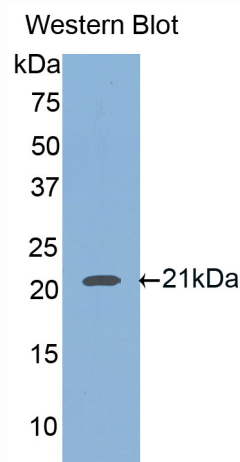
**Immunoglobulin Type:** IgG

**Purification:** Affinity Chromatography.

**Applications:** WB, ICC, IHC-P, IHC-F, ELISA

**Concentration:** 200µg/mL

**UOM:** 100µg



*Sample: Recombinant HJV, Human*

## **[ IMMUNOGEN INFORMATION ]**

**Immunogen:** Recombinant HJV (Lys234~Ser416) expressed in *E.coli*.

**Accession No.:** RPB995Hu01

**Sequence:** The target protein is fused with N-terminal His-Tag and its sequence is listed below.

MGHHHHHSGSEF-KVYQAEV DNLPVAFEDG SINGGDRPGG SLSIQTANP GNHVEIQAA  
Y IGTTIIIRQT AGQLSFSIKV AEDVAMAFSA EQDLQLCVGG CPPSQRLSRS ERNRRGAI  
T DTARRLCKEG LPVEDAYFHS CVFDVLISGD PNFTVAAQAA LEDARAFLPD LEKHLHLP  
SPD AGVPLSSATL LAPLLS

## **[ ANTIBODY SPECIFICITY ]**

The antibody is a rabbit polyclonal antibody raised against HJV. It has been selected for its ability to recognize HJV in immunohistochemical staining and western blotting.

## **[ APPLICATIONS ]**

Western blotting: 1:50-400

Immunocytochemistry in formalin fixed cells: 1:50-500

Immunohistochemistry in formalin fixed frozen section: 1:50-500

Immunohistochemistry in paraffin section: 1:10-100

Enzyme-linked Immunosorbent Assay: 1:100-200

Optimal working dilutions must be determined by end user.

## **[ CONTENTS ]**

**Form & Buffer:** Supplied as solution form in PBS, pH7.4, containing 0.02% NaN<sub>3</sub>, 50% glycerol.

## **[ STORAGE ]**

Store at 4°C for frequent use. Stored at -20°C to -80°C in a manual defrost freezer for one year without detectable loss of activity. Avoid repeated freeze-thaw cycles.

**Note:** *As fluorescence can photobleach when exposed to light, so the antibody must be protected from light.*