

**PAA769Mu81**  
**FITC-Linked Antibody to Lipase,Hepatic(LIPC)**  
**Organism Species: Mus musculus (Mouse)**  
***Instruction manual***

FOR IN VITRO USE AND RESEARCH USE ONLY  
NOT FOR USE IN CLINICAL DIAGNOSTIC PROCEDURES

9th Edition (Revised in Jul, 2013)

**[ PRODUCT INFORMATION ]**

**Immunogen:** LIPC, Mouse

**Clonality:** Polyclonal

**Conjugation:** FITC

**Host:** Rabbit

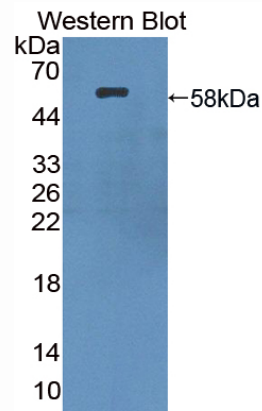
**Immunoglobulin Type:** IgG

**Purification:** Affinity Chromatography.

**Applications:** WB, ICC, IHC-P, IHC-F, ELISA

**Concentration:** 200µg/mL

**UOM:** 100µg



*Sample: Recombinant LIPC, Mouse*

**[ IMMUNOGEN INFORMATION ]**

**Immunogen:** Recombinant LIPC (Ser159~Ile415) expressed in *E. coli*.

**Accession No.:** RPA769Mu01

**Sequence:** The target protein is fused with two N-terminal Tags, His-tag and GST-tag and its sequence is listed below.

MSPILGYWKI KGLVQPTRL L LEYLEEKYEE HLYERDEGDK WRNKKFELGL EFPNLPYYID  
GDVKLTQSMA IIRYIADKHN MLGGCPKERA EISMLEGAVL DIRYGVSR IA YSKDFETLKV  
DFLSKLP EML KMFEDRLCHK TYLNGDHVTH PDFMLYDALD VVLYMDPMCL DAFP KLVCFK  
KRIEAIPQID KYLKSSKYIA WPLQG WQATF GGGDHPPKSD GSTSGSGHHH HHSAGLVPR  
GSTAIGMKET AAKFERQHM DSPDLGTLEV LFQG PLGS-SR SKVHLIGYSL  
GAHVSGFAGSSMDGKNKIGR ITGLDPAGPM FEGTSPNERL SPDDANFVDA IHTFTREHMG

LSVGIKQPIAHYDFYPNGGS FQPGCHFLEL YKHIAEHGLN AITQTIKCAH ERSVHLFIDS  
LQHSDLQSIGFQCSDMGFSFS QGLCLSCCKG RCNTLGYDIR KDRSGKSKRL FLITRAQSPF  
KVYHYQFKIQFINQIEKPVE PTFTMSLLGT KEEIKRIPIT LGEGITSNKT YSFLITLDKD IGELI

## [ **ANTIBODY SPECIFICITY** ]

The antibody is a rabbit polyclonal antibody raised against LIPC. It has been selected for its ability to recognize LIPC in immunohistochemical staining and western blotting.

## [ **APPLICATIONS** ]

Western blotting: 1:50-400

Immunocytochemistry in formalin fixed cells: 1:50-500

Immunohistochemistry in formalin fixed frozen section: 1:50-500

Immunohistochemistry in paraffin section: 1:10-100

Enzyme-linked Immunosorbent Assay: 1:100-200

Optimal working dilutions must be determined by end user.

## [ **CONTENTS** ]

**Form & Buffer:** Supplied as solution form in PBS, pH7.4, containing 0.02% NaN<sub>3</sub>, 50% glycerol.

## [ **STORAGE** ]

Store at 4°C for frequent use. Stored at -20°C to -80°C in a manual defrost freezer for one year without detectable loss of activity. Avoid repeated freeze-thaw cycles.

**Note:** *As fluorescence can photobleach when exposed to light, so the antibody must be protected from light.*