

PAB048Hu81

FITC-Linked Antibody

To Protein Tyrosine Phosphatase Receptor Type B (PTPRB)

Organism Species: Homo sapiens (Human)

Instruction manual

FOR IN VITRO USE AND RESEARCH USE ONLY

NOT FOR USE IN CLINICAL DIAGNOSTIC PROCEDURES

[**PRODUCT INFORMATION**]

Immunogen: PTPRB, Human

Clonality: Polyclonal

Conjugation: FITC

Host: Rabbit

Immunoglobulin Type: IgG

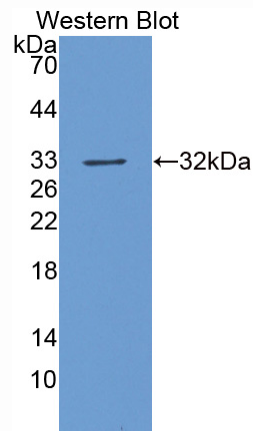
Purification: Affinity Chromatography.

Applications: WB, ICC, IHC-P, IHC-F, ELISA

Concentration: 200µg/mL

UOM: 100µg

9th Edition (Revised in Jul, 2013)



Sample: Recombinant PTPRB, Human

[**IMMUNOGEN INFORMATION**]

Immunogen: Recombinant PTPRB (Ala1655~Asp1918) expressed in *E.coli*.

Accession No.: RPB048Hu01

Sequence: The target protein is fused with two N-terminal Tags, His-tag and T7-tag and its sequence is listed below.

MGSSHHHHHH SSGLVPRGSH MASMTGGQQM GRGSEF- ARLSIR RDRPLSVHLN
LGQKGNRKTS CPIKINQFEG HFMKLQADSN YLLSKEYEEL KDVGRNQSCD IALLPENRGK
NRYNNILPYD ATRVKLSNVD DDPCSDYINA SYIPGNNFRR EYIVTQGPLP GTKDDFWKMW
WEQNVHNIVM VTQCVEKGRV KCDHYWPADQ DSLYYGDLIL QMLSESVLPE WTIREFKICG
EEQLDAHRLI RHFHYTVWPD HGVPETTQSL IQFVRTVRDY INRSPGAGPT VVHCSAGVGR
TGTFIALD

[ANTIBODY SPECIFICITY]

The antibody is a rabbit polyclonal antibody raised against PTPRB. It has been selected for its ability to recognize PTPRB in immunohistochemical staining and western blotting.

[APPLICATIONS]

Western blotting: 1:50-400

Immunocytochemistry in formalin fixed cells: 1:50-500

Immunohistochemistry in formalin fixed frozen section: 1:50-500

Immunohistochemistry in paraffin section: 1:10-100

Enzyme-linked Immunosorbent Assay: 1:100-200

Optimal working dilutions must be determined by end user.

[CONTENTS]

Form & Buffer: Supplied as solution form in PBS, pH7.4, containing 0.02% NaN₃, 50% glycerol.

[STORAGE]

Store at 4°C for frequent use. Stored at -20°C to -80°C in a manual defrost freezer for one year without detectable loss of activity. Avoid repeated freeze-thaw cycles.

Note: *As fluorescence can photobleach when exposed to light, so the antibody must be protected from light.*