

**SAA544Po09****HRP-Linked Rabbit Anti-Pig IgG Antibody**  
**Organism Species: *Sus scrofa*; Porcine (Pig)*****Instruction manual***

FOR IN VITRO USE AND RESEARCH USE ONLY  
NOT FOR USE IN CLINICAL DIAGNOSTIC PROCEDURES

---

---

11th Edition (Revised in May, 2016)

## **[ PROPERTIES ]**

**Source:** Antibody labeling**Host:** Rabbit**Purification:** Antigen-specific Affinity Chromatography.**Label:** HRP**Traits:** Liquid**Concentration:** 200µg/mL**UOM:** 100µg**Applications:** WB; IP; IHC-P; IHC-F; ELISA.

## **[ IMMUNOGEN ]**

**Immunogen:** IgG, Porcine

## **[ APPLICATIONS ]**

Western blotting: 1:2000-10000

Immunoprecipitation: 1:2000-10000

Immunohistochemistry in formalin fixed frozen section: 1:200-1000

Immunohistochemistry in paraffin section: 1:200-1000

Enzyme-linked Immunosorbent Assay: 1:4000-15000

Optimal working dilutions must be determined by end user.

## **[ FORMULATION ]**

**Form & Buffer:** Supplied as solution form in PBS, pH7.4, containing 0.02% NaN<sub>3</sub>, 50% glycerol.

## **[ STORAGE AND STABILITY ]**

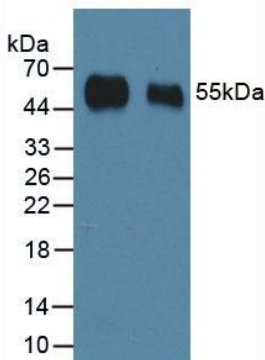
**Storage:** Avoid repeated freeze/thaw cycles.

Store at 4°C for frequent use.

Aliquot and store at -20°C for 12 months.

**Stability Test:** The thermal stability is described by the loss rate. The loss rate was determined by accelerated thermal degradation test, that is, incubate the protein at 37°C for 48h, and no obvious degradation and precipitation were observed. The loss rate is less than 5% within the expiration date under appropriate storage condition.

## **[ IDENTIFICATION ]**



**Figure 1:** Used in Western Blot, Sample: Native Porcine IgG Protein

**Ab:** 1:2000 Dilution of HRP-Linked Rabbit Anti-Pig IgG Ab (Catalog: SAA544Po09)