



SAA544Rb10

Caprine Anti-Rabbit IgG Antibody

Organism Species: *Oryctolagus cuniculus* (Rabbit)

Instruction manual

FOR IN VITRO USE AND RESEARCH USE ONLY
NOT FOR USE IN CLINICAL DIAGNOSTIC PROCEDURES

12th Edition (Revised in Aug, 2016)

[PROPERTIES]

Source: Polyclonal antibody preparation

Host: Caprine

Purification: Antigen-specific Affinity Chromatography.

Traits: Liquid

Concentration: 200µg/mL

UOM: 100µg

Applications: WB; IHC; ICC.

[IMMUNOGEN]

Immunogen: IgG, Rabbit

[APPLICATIONS]

Western blotting: 1:2000-10000

Immunohistochemistry: 1:200-1000

Immunocytochemistry: 1:200-1000

Optimal working dilutions must be determined by end user.

[FORMULATION]

Form & Buffer: Supplied as solution form in 0.01M PBS, pH7.4, containing 0.05% Proclin-300, 50% glycerol.

[STORAGE AND STABILITY]

Storage: Avoid repeated freeze/thaw cycles.

Store at 4°C for frequent use.

Aliquot and store at -20°C for 12 months.

Stability Test: The thermal stability is described by the loss rate. The loss rate was determined by accelerated thermal degradation test, that is, incubate the protein at 37°C for 48h, and no obvious degradation and precipitation were observed. The loss rate is less than 5% within the expiration date under appropriate storage condition.

[IDENTIFICATION]

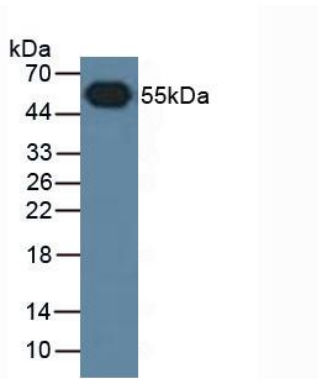


Figure 1: Used in Western Blot, Sample: Rabbit Serum

Ab: 1:4000 Dilution of Caprine Anti-Rabbit IgG Ab (Catalog: SAA544Rb10)