

**MAG369Hu21**

**Monoclonal Antibody to ATPase, Na<sup>+</sup>/K<sup>+</sup> Transporting Alpha 1 Polypeptide (ATP1a1)**

**Organism Species: *Homo sapiens (Human)***

***Instruction manual***

FOR RESEARCH USE ONLY

NOT FOR USE IN CLINICAL DIAGNOSTIC PROCEDURES

---

13th Edition (Revised in Aug, 2023)

**[ PROPERTIES ]**

**Source:** Monoclonal antibody preparation

**Host:** Mouse

**Antibody isotype:** IgG2b Kappa

**Purification:** Protein A + Protein G affinity chromatography

**Clone number:** C206

**Traits:** Liquid

**Concentration:** 1mg/mL

**UOM:** 200 $\mu$ L

**Cross Reactivity:** Mouse;Rat;Rabbit;Porcine;Bovine

**Applications:** WB; IHC; ICC; IP.

**[ IMMUNOGEN ]**

**Immunogen:** Recombinant ATP1a1 (His493~Ala660) expressed in *E.coli*

**Accession No.:** RPG369Hu01

**[ APPLICATIONS ]**

Western blotting: 0.01-5 $\mu$ g/mL;

Immunohistochemistry: 5-20 $\mu$ g/mL;

Optimal working dilutions must be determined by end user.

**[ FORMULATION ]**

**Form & Buffer:** Supplied as solution form in PBS, pH7.4, containing 0.02% NaN<sub>3</sub>, 50% glycerol.

**[ STORAGE AND STABILITY ]**

**Storage:** Avoid repeated freeze/thaw cycles.

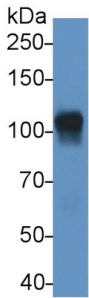
Store at 4°C for frequent use.

Aliquot and store at -20°C for 24 months.

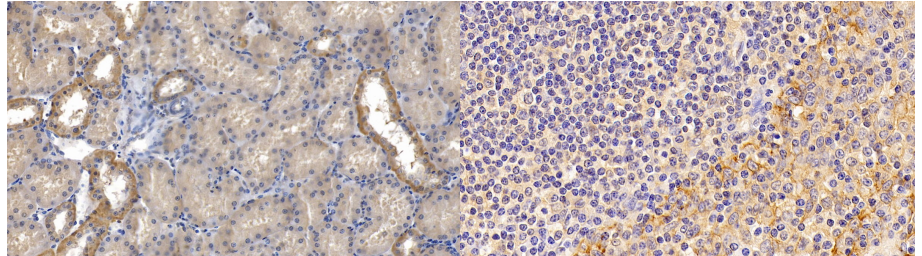
**Stability Test:** The thermal stability is described by the loss rate. The loss rate was determined by accelerated thermal degradation test, that is, incubate the protein at 37°C for 48h, and no

obvious degradation and precipitation were observed. The loss rate is less than 5% within the expiration date under appropriate storage condition.

**[ IDENTIFICATION ]**

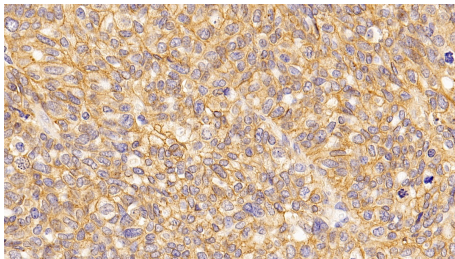


Western Blot; Sample: Mouse Heart lysate; Primary Ab: 5µg/ml Mouse Anti-Human ATP1a1 Antibody Second Ab: 0.2µg/mL HRP-Linked Caprine Anti-Mouse IgG Polyclonal Antibody (Catalog: SAA544Mu19)

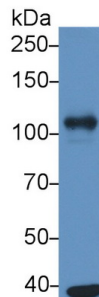


DAB staining on IHC-P; Samples: Human Kidney Tissue; Primary Ab: 20µg/ml Mouse Anti-Human ATP1a1 Antibody Second Ab: 2µg/mL HRP-Linked Caprine Anti-Mouse IgG Polyclonal Antibody (Catalog: SAA544Mu19)

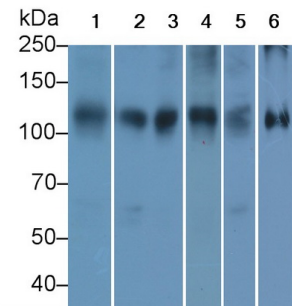
DAB staining on IHC-P; Samples: Human amygdalitis Tissue; Primary Ab: 10µg/ml Mouse Anti-Human ATP1a1 Antibody Second Ab: 2µg/mL HRP-Linked Caprine Anti-Mouse IgG Polyclonal Antibody (Catalog: SAA544Mu19)



DAB staining on IHC-P; Samples: Human Ovarian cancer Tissue; Primary Ab: 10µg/ml Mouse Anti-Human ATP1a1 Antibody Second Ab: 2µg/mL HRP-Linked Caprine Anti-Mouse IgG Polyclonal Antibody (Catalog: SAA544Mu19)



Western Blot; Sample: Human A549 cell lysate; Primary Ab: 5µg/ml Mouse Anti-Human ATP1a1 Antibody Second Ab: 0.2µg/mL HRP-Linked Caprine Anti-Mouse IgG Polyclonal Antibody (Catalog: SAA544Mu19)



Western Blot; Sample: Lane1: Mouse Heart lysate; Lane2: Porcine Heart lysate; Lane3: Rat Heart lysate; Lane4: Bovine Heart lysate; Lane5: Rabbit Heart lysate; Lane6: Porcine Cerebrum lysate Primary Ab: 2µg/ml Mouse Anti-Human ATP1a1 Antibody Second Ab: 0.2µg/mL HRP-Linked Rabbit Anti-Mouse IgG Polyclonal Antibody

**[ IMPORTANT NOTE ]**

The kit is designed for research use only, we will not be responsible for any issue if the kit was used in clinical diagnostic or any other procedures.