

MAB342Mi21

Monoclonal Antibody to Actin Alpha 2, Smooth Muscle (ACTa2)

Organism Species: *Homo sapiens (Human)*, *Mus musculus (Mouse)*, *Rattus norvegicus (Rat)*

Instruction manual

FOR RESEARCH USE ONLY

NOT FOR USE IN CLINICAL DIAGNOSTIC PROCEDURES

13th Edition (Revised in Aug, 2023)

[PROPERTIES]

Source: Monoclonal antibody preparation

Host: Mouse

Antibody isotype: IgG1 Kappa

Purification: Protein A + Protein G affinity chromatography

Clone number: F1

Traits: Liquid

Concentration: 1mg/ml

UOM: 20µl

Cross Reactivity: Canine;Porcine;Bovine

Applications: WB; IHC; ICC; IP.

[IMMUNOGEN]

Immunogen: Recombinant ACTa2 (Ile167~Phe377) expressed in *E.coli*

Accession No.: RPB342Mi01

[APPLICATIONS]

Western blotting: 0.001-2µg/mL

Immunohistochemistry: 5-20µg/mL

Immunocytochemistry: 5-20µg/mL

Optimal working dilutions must be determined by end user.

[FORMULATION]

Form & Buffer: Supplied as solution form in 0.01M PBS, pH7.4, containing 0.05% Proclin-300, 50% glycerol.

[STORAGE AND STABILITY]

Storage: Avoid repeated freeze/thaw cycles.

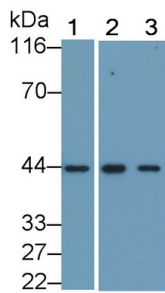
Store at 4°C for frequent use.

Aliquot and store at -20°C for 24 months.

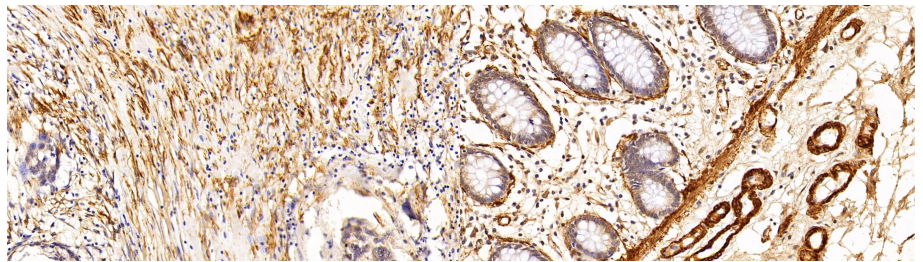
Stability Test: The thermal stability is described by the loss rate. The loss rate was determined

by accelerated thermal degradation test, that is, incubate the protein at 37°C for 48h, and no obvious degradation and precipitation were observed. The loss rate is less than 5% within the expiration date under appropriate storage condition.

[IDENTIFICATION]

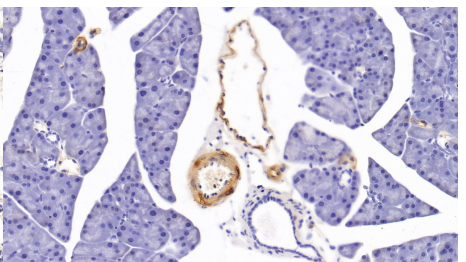
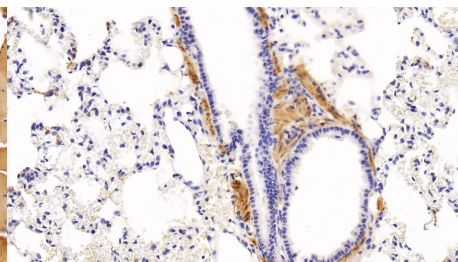
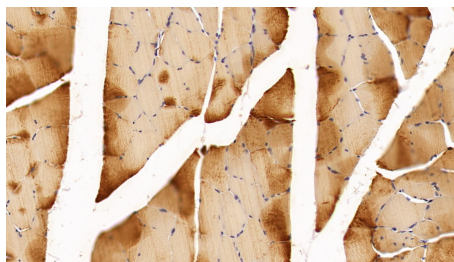


Western Blot; Sample: Lane1: Porcine Heart lysate; Lane2: Bovine Heart lysate; Lane3: Canine Heart lysate
 Primary Ab: 0.001µg/ml Mouse Anti-Multi-species ACTa2 Antibody Second Ab: 0.2µg/mL HRP-Linked Caprine Anti-Mouse IgG Polyclonal Antibody (Catalog: SAA544Mu19)



DAB staining on IHC-P; Sample: Human Ovarian cancer Tissue; Primary Ab: 10ug/ml Mouse Anti-Multi-species ACTa2 Antibody Second Ab: 2µg/mL HRP-Linked Caprine Anti-Mouse IgG Polyclonal Antibody (Catalog: SAA544Mu19)

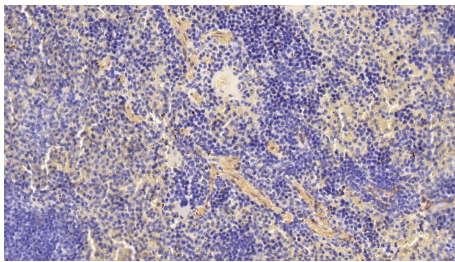
DAB staining on IHC-P; Sample: Human Rectum Tissue; Primary Ab: 10ug/ml Mouse Anti-Multi-species ACTa2 Antibody Second Ab: 2µg/mL HRP-Linked Caprine Anti-Mouse IgG Polyclonal Antibody (Catalog: SAA544Mu19)



DAB staining on IHC-P; Sample: Rat Skeletal muscle Tissue; Primary Ab: 3ug/ml Mouse Anti-Multi-species ACTa2 Antibody Second Ab: 2µg/mL HRP-Linked Caprine Anti-Mouse IgG Polyclonal Antibody (Catalog: SAA544Mu19)

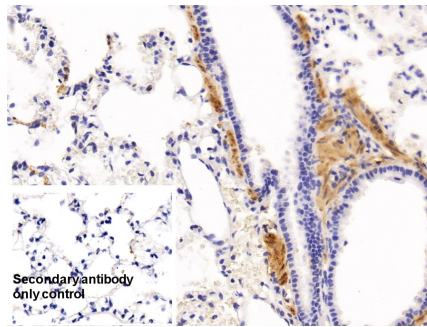
DAB staining on IHC-P; Sample: Rat Lung Tissue; Primary Ab: 3ug/ml Mouse Anti-Multi-species ACTa2 Antibody Second Ab: 2µg/mL HRP-Linked Caprine Anti-Mouse IgG Polyclonal Antibody (Catalog: SAA544Mu19)

DAB staining on IHC-P; Sample: Mouse Pancreas Tissue; Primary Ab: 3ug/ml Mouse Anti-Multi-species ACTa2 Antibody Second Ab: 2µg/mL HRP-Linked Caprine Anti-Mouse IgG Polyclonal Antibody (Catalog: SAA544Mu19)



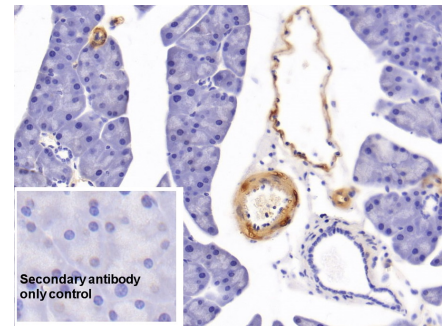
DAB staining on IHC-P;

Sample: Mouse Spleen Tissue;
 Primary Ab: 3ug/ml Mouse Anti-Multi-species ACTa2 Antibody
 Second Ab: 2µg/mL HRP-Linked Caprine Anti-Mouse IgG Polyclonal Antibody
 (Catalog: SAA544Mu19)



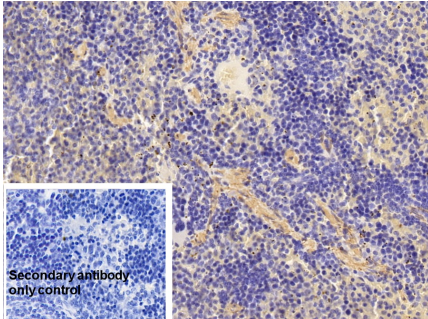
DAB staining on IHC-P;

Sample: Rat Lung Tissue
 Primary Ab: 3µg/ml Mouse Anti-Multi-species ACTa2 Antibody
 Control: Used PBS instead of primary antibody
 Second Ab: 2µg/ml HRP-Linked Caprine Anti-Mouse IgG Polyclonal Antibody
 (Catalog: SAA544Mu19)



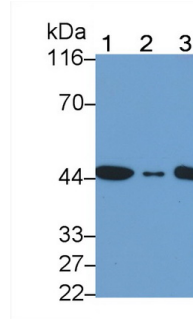
DAB staining on IHC-P;

Sample: Mouse Pancreas Tissue
 Primary Ab: 3µg/ml Mouse Anti-Multi-species ACTa2 Antibody
 Control: Used PBS instead of primary antibody
 Second Ab: 2µg/ml HRP-Linked Caprine Anti-Mouse IgG Polyclonal Antibody
 (Catalog: SAA544Mu19)



DAB staining on IHC-P;

Sample: Mouse Spleen Tissue
 Primary Ab: 3µg/ml Mouse Anti-Multi-species ACTa2 Antibody
 Control: Used PBS instead of primary antibody
 Second Ab: 2µg/ml HRP-Linked Caprine Anti-Mouse IgG Polyclonal Antibody
 (Catalog: SAA544Mu19)



Western Blot; Sample: Lane1: Human Placenta lysate; Lane2: Rat Heart lysate; Lane3: Mouse Heart lysate
 Primary Ab: 0.005µg/ml Mouse Anti-Multi-species ACTa2 Antibody
 Second Ab: 0.2µg/mL HRP-Linked Caprine Anti-Mouse IgG Polyclonal Antibody
 (Catalog: SAA544Mu19)

[IMPORTANT NOTE]

The kit is designed for research use only, we will not be responsible for any issue if the kit was used in clinical diagnostic or any other procedures.