

**MAB697Hu21**

**Monoclonal Antibody to Alpha-1-Antitrypsin (a1AT)**

**Organism Species: *Homo sapiens* (Human)**

***Instruction manual***

FOR RESEARCH USE ONLY

NOT FOR USE IN CLINICAL DIAGNOSTIC PROCEDURES

---

13th Edition (Revised in Aug, 2023)

**[ PROPERTIES ]**

**Source:** Monoclonal antibody preparation

**Host:** Mouse

**Antibody isotype:** IgG1 Kappa

**Purification:** Protein A + Protein G affinity chromatography

**Clone number:** H8

**Traits:** Liquid

**Concentration:** 1mg/mL

**UOM:** 100µL

**Cross Reactivity:** Mouse;Rat;Porcine

**Applications:** WB; IHC; ICC/IF.

**[ IMMUNOGEN ]**

**Immunogen:** Recombinant a1AT (Glu25~Lys418) expressed in *E.coli*

**Accession No.:** RPB697Hu01

**[ APPLICATIONS ]**

Western blotting: 0.01-2µg/mL;

Immunohistochemistry: 5-20µg/mL;

Immunocytochemistry: 5-20µg/mL;

Optimal working dilutions must be determined by end user.

**[ FORMULATION ]**

**Form & Buffer:** Supplied as solution form in 0.01M PBS, pH7.4, containing 0.05% Proclin-300, 50% glycerol.

**[ STORAGE AND STABILITY ]**

**Storage:** Avoid repeated freeze/thaw cycles.

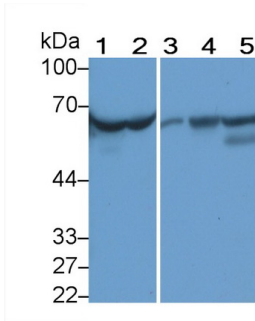
Store at 4°C for frequent use.

Aliquot and store at -20°C for 24 months.

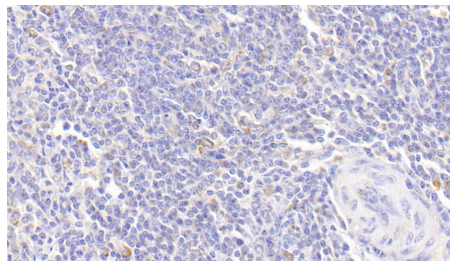
**Stability Test:** The thermal stability is described by the loss rate. The loss rate was determined

by accelerated thermal degradation test, that is, incubate the protein at 37°C for 48h, and no obvious degradation and precipitation were observed. The loss rate is less than 5% within the expiration date under appropriate storage condition.

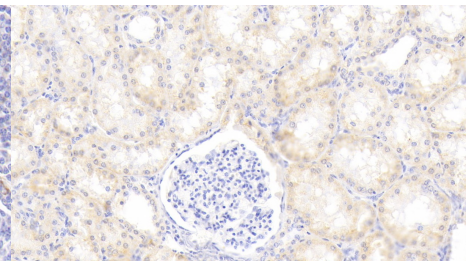
**[ IDENTIFICATION ]**



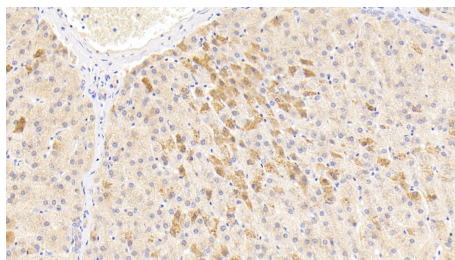
Western Blot; Sample: Lane1: Human Serum; Lane2: Human Plasma; Lane3: Rat Heart lysate; Lane4: Rat Liver lysate; Lane5: Mouse Liver lysate  
 Primary Ab: 2µg/ml Mouse Anti-Human a1AT Antibody Second Ab: 0.2µg/mL HRP-Linked Caprine Anti-Mouse IgG Polyclonal Antibody (Catalog: SAA544Mu19)



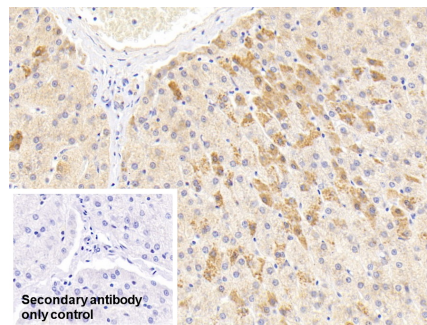
DAB staining on IHC-P; Sample: Human Spleen Tissue; Primary Ab: 20µg/ml Mouse Anti-Human a1AT Antibody Second Ab: 2µg/mL HRP-Linked Caprine Anti-Mouse IgG Polyclonal Antibody (Catalog: SAA544Mu19)



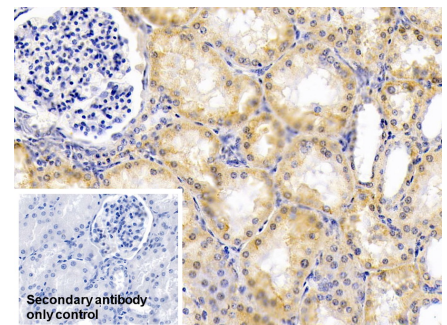
DAB staining on IHC-P; Sample: Human Kidney Tissue; Primary Ab: 20µg/ml Mouse Anti-Human a1AT Antibody Second Ab: 2µg/mL HRP-Linked Caprine Anti-Mouse IgG Polyclonal Antibody (Catalog: SAA544Mu19)



DAB staining on IHC-P; Sample: Human Liver Tissue; Primary Ab: 20µg/ml Mouse Anti-Human a1AT Antibody Second Ab: 2µg/mL HRP-Linked Caprine Anti-Mouse IgG Polyclonal Antibody (Catalog: SAA544Mu19)



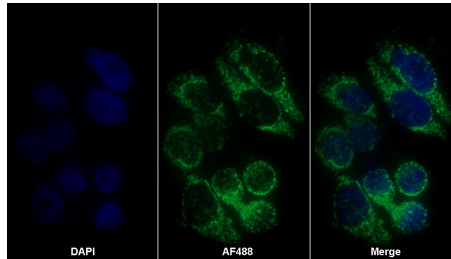
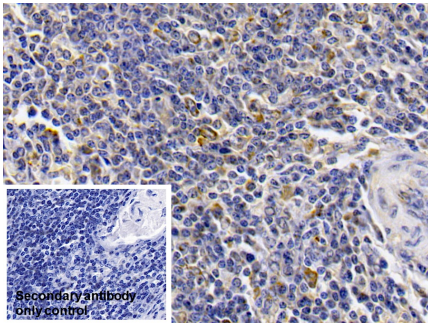
DAB staining on IHC-P; Sample: Human Liver Tissue Primary Ab: 20µg/ml Mouse Anti-Human a1AT Antibody Control: Used PBS instead of primary antibody Second Ab: 2µg/ml HRP-Linked



DAB staining on IHC-P; Sample: Human Kidney Tissue Primary Ab: 20µg/ml Mouse Anti-Human a1AT Antibody Control: Used PBS instead of primary antibody Second Ab: 2µg/ml HRP-Linked

Caprine Anti-Mouse IgG Polyclonal  
Antibody  
(Catalog: SAA544Mu19)

Caprine Anti-Mouse IgG Polyclonal  
Antibody  
(Catalog: SAA544Mu19)



DAB staining on IHC-P;  
Sample: Human Spleen Tissue  
Primary Ab: 20µg/ml Mouse Anti-  
Human a1AT Antibody  
Control: Used PBS instead of primary  
antibody  
Second Ab: 2µg/ml HRP-Linked  
Caprine Anti-Mouse IgG Polyclonal  
Antibody  
(Catalog: SAA544Mu19)

AF488 staining on IF;  
Sample: HepG2 cell  
Primary Ab: 30µg/ml Mouse Anti-  
Human a1AT Antibody  
Second Ab: 2µg/ml AF488-Linked  
Caprine Anti-Mouse IgG Polyclonal  
Antibody  
(Catalog: SAA544Mu11)

**[ IMPORTANT NOTE ]**

The kit is designed for research use only, we will not be responsible for any issue if the kit was used in clinical diagnostic or any other procedures.