

**MAA006Hu24**

**Monoclonal Antibody to Amphiregulin (AREG)**

**Organism Species: *Homo sapiens (Human)***

***Instruction manual***

FOR RESEARCH USE ONLY

NOT FOR USE IN CLINICAL DIAGNOSTIC PROCEDURES

---

13th Edition (Revised in Aug, 2023)

**[ PROPERTIES ]**

**Source:** Monoclonal antibody preparation

**Host:** Mouse

**Antibody isotype:** Ig2b Kappa

**Purification:** Protein A + Protein G affinity chromatography

**Clone number:** A3

**Traits:** Liquid

**Concentration:** 1mg/mL

**UOM:** 100µL

**Cross Reactivity:** Rat

**Applications:** WB; IHC; ICC/IF

**[ IMMUNOGEN ]**

**Immunogen:** Recombinant AREG (Ser20~Asp100) expressed in *E.coli*

**Accession No.:** RPA006Hu01

**[ APPLICATIONS ]**

Western blotting: 0.01-2µg/mL;

Immunohistochemistry: 5-30µg/mL;

Immunocytochemistry: 5-30µg/mL;

Optimal working dilutions must be determined by end user.

**[ FORMULATION ]**

**Form & Buffer:** Supplied as solution form in 0.01M PBS, pH7.4, containing 0.05% Proclin-300, 50% glycerol.

**[ STORAGE AND STABILITY ]**

**Storage:** Avoid repeated freeze/thaw cycles.

Store at 4°C for frequent use.

Aliquot and store at -20°C for 24 months.

**Stability Test:** The thermal stability is described by the loss rate. The loss rate was determined

by accelerated thermal degradation test, that is, incubate the protein at 37°C for 48h, and no obvious degradation and precipitation were observed. The loss rate is less than 5% within the expiration date under appropriate storage condition.

**[ IDENTIFICATION ]**

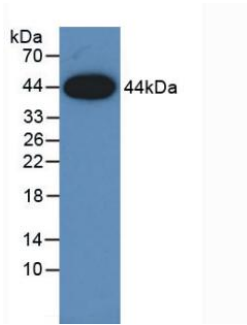
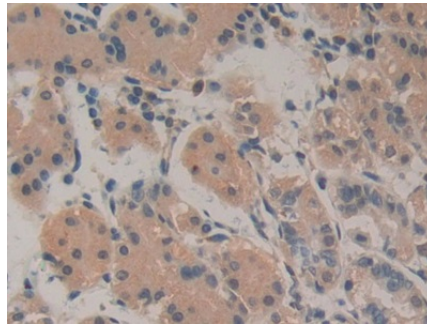
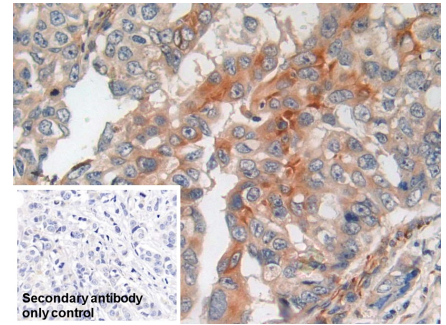


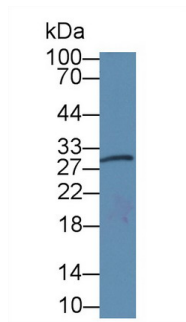
Figure. Western Blot; Sample: Recombinant AREG, Human.



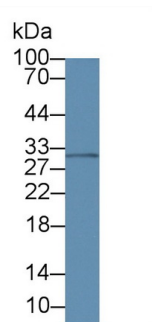
DAB staining on IHC-P; Samples: Human Stomach Tissue; Primary Ab: 30µg/ml Mouse Anti-Human AREG Antibody Second Ab: 2µg/mL HRP-Linked Caprine Anti-Mouse IgG Polyclonal Antibody (Catalog: SAA544Mu19)



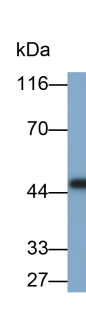
DAB staining on IHC-P; Sample: Human Breast cancer Tissue Primary Ab: 30µg/ml Mouse Anti-Human AREG Antibody Control: Used PBS instead of primary antibody Second Ab: 2µg/ml HRP-Linked Caprine Anti-Mouse IgG Polyclonal Antibody (Catalog: SAA544Mu19)



Western Blot; Sample: Rat Placenta lysate; Primary Ab: 3µg/ml Mouse Anti-Human AREG Antibody Second Ab: 0.2µg/mL HRP-Linked Caprine Anti-Mouse IgG Polyclonal



Western Blot; Sample: Human MCF7 cell lysate; Primary Ab: 3µg/ml Mouse Anti-Human AREG Antibody Second Ab: 0.2µg/mL HRP-Linked Caprine Anti-Mouse IgG Polyclonal

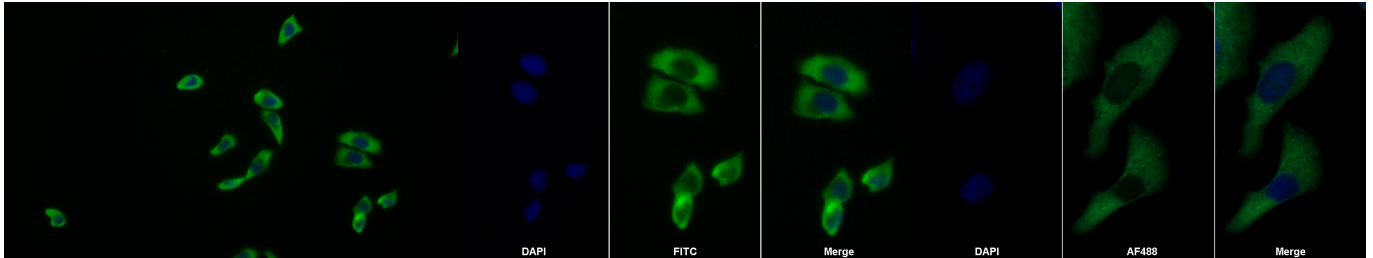


Western Blot; Sample: Rat Cerebrum lysate Primary Ab: 0.1µg/ml Mouse Anti-Human AREG Antibody Second Ab: 0.2µg/ml HRP-Linked Caprine Anti-Mouse IgG Polyclonal

Antibody  
(Catalog: SAA544Mu19)

Antibody  
(Catalog: SAA544Mu19)

Antibody  
(Catalog: SAA544Mu19)



FITC staining on IF;

Samples: Human MCF7 cell;

Primary Ab: 20µg/ml Mouse Anti-Human AREG Antibody

Second Ab: 0.75µg/ml FITC-Linked Caprine Anti-Mouse IgG Polyclonal

Antibody

(Catalog: SAA544Mu18)

FITC staining on IF;

Sample: MCF7 cell

Primary Ab: 20µg/ml Mouse Anti-Human AREG Antibody

Second Ab: 2µg/ml FITC-Linked Caprine Anti-Mouse IgG Polyclonal

Antibody

(Catalog: SAA544Mu11)

AF488 staining on IF;

Sample: HeLa cell

Primary Ab: 30µg/ml Mouse Anti-Human AREG Antibody

Second Ab: 2µg/ml AF488-Linked Caprine Anti-Mouse IgG Polyclonal

Antibody

(Catalog: SAA544Mu11)

**[ IMPORTANT NOTE ]**

The kit is designed for research use only, we will not be responsible for any issue if the kit was used in clinical diagnostic or any other procedures.