

**MAB340Hu22**

**Monoclonal Antibody to Beta Actin (ACTB)**

**Organism Species: *Homo sapiens (Human)***

***Instruction manual***

FOR RESEARCH USE ONLY

NOT FOR USE IN CLINICAL DIAGNOSTIC PROCEDURES

---

13th Edition (Revised in Aug, 2023)

**[ PROPERTIES ]**

**Source:** Monoclonal antibody preparation

**Host:** Mouse

**Antibody isotype:** IgG1 Kappa

**Purification:** Protein A + Protein G affinity chromatography

**Clone number:** D2

**Traits:** Liquid

**Concentration:** 1mg/mL

**UOM:** 100µL

**Cross Reactivity:** Canine; Porcine; Bovine; Caprine; Ovine.

**Applications:** WB; IHC; ICC; IP.

**[ IMMUNOGEN ]**

**Immunogen:** Recombinant ACTB (Met1~Phe375) expressed in *E.coli*

**Accession No.:** RPB340Hu01

**[ APPLICATIONS ]**

Western blotting: 0.01-5µg/mL;

Immunohistochemistry: 5-20µg/mL;

Immunocytochemistry: 5-20µg/mL;

Optimal working dilutions must be determined by end user.

**[ FORMULATION ]**

**Form & Buffer:** Supplied as solution form in 0.01M PBS, pH7.4, containing 0.05% Proclin-300, 50% glycerol.

**[ STORAGE AND STABILITY ]**

**Storage:** Avoid repeated freeze/thaw cycles.

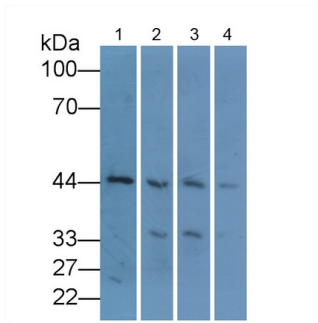
Store at 4°C for frequent use.

Aliquot and store at -20°C for 24 months.

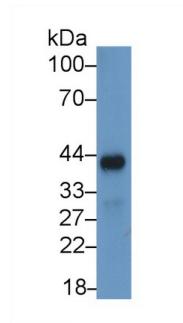
**Stability Test:** The thermal stability is described by the loss rate. The loss rate was determined

by accelerated thermal degradation test, that is, incubate the protein at 37°C for 48h, and no obvious degradation and precipitation were observed. The loss rate is less than 5% within the expiration date under appropriate storage condition.

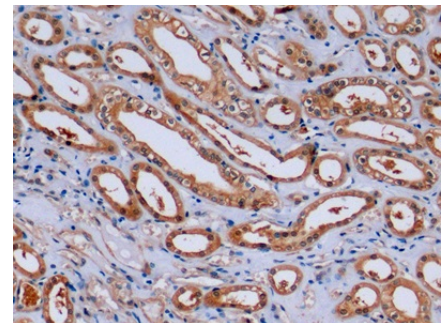
**[ IDENTIFICATION ]**



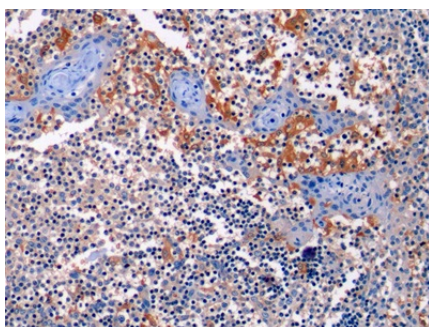
Western Blot; Sample: Lane1: Human Lung lysate; Lane2: Canine Kidney lysate; Lane3: Bovine Kidney lysate; Lane4: Porcine Kidney lysate Primary Ab: 5µg/ml Mouse Anti-Human ACTb Antibody Second Ab: 0.2µg/mL HRP-Linked Caprine Anti-Mouse IgG Polyclonal Antibody (Catalog: SAA544Mu19)



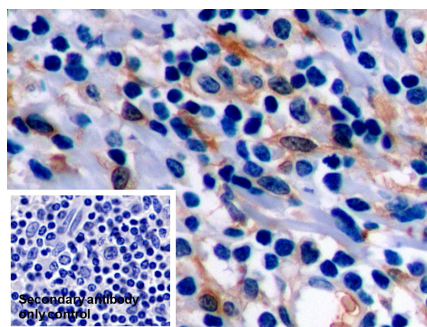
Western Blot; Sample: Caprine Kidney lysate Primary Ab: 5µg/ml Mouse Anti-Human ACTb Antibody Second Ab: 0.2µg/mL HRP-Linked Caprine Anti-Mouse IgG Polyclonal Antibody (Catalog: SAA544Mu19)



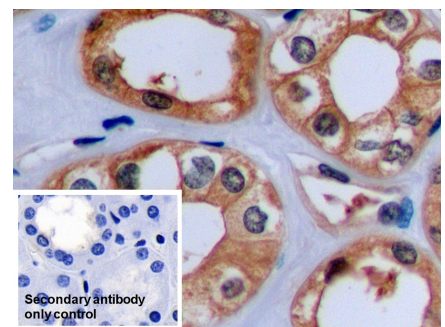
DAB staining on IHC-P; Samples: Human Kidney Tissue; Primary Ab: 10µg/ml Mouse Anti-Human ACTb Antibody Second Ab: 2µg/mL HRP-Linked Caprine Anti-Mouse IgG Polyclonal Antibody (Catalog: SAA544Mu19)



DAB staining on IHC-P; Samples: Human Tonsil Tissue; Primary Ab: 10µg/ml Mouse Anti-Human ACTb Antibody Second Ab: 2µg/mL HRP-Linked Caprine Anti-Mouse IgG Polyclonal Antibody



DAB staining on IHC-P; Sample: Human Tonsil Tissue Primary Ab: 10µg/ml Mouse Anti-Human ACTB Antibody Control: Used PBS instead of primary antibody Second Ab: 2µg/ml HRP-Linked



DAB staining on IHC-P; Sample: Human Kidney Tissue Primary Ab: 10µg/ml Mouse Anti-Human ACTB Antibody Control: Used PBS instead of primary antibody Second Ab: 2µg/ml HRP-Linked

(Catalog: SAA544Mu19)

Caprine Anti-Mouse IgG Polyclonal  
Antibody

(Catalog: SAA544Mu19)

Caprine Anti-Mouse IgG Polyclonal  
Antibody

(Catalog: SAA544Mu19)

**[ IMPORTANT NOTE ]**

The kit is designed for research use only, we will not be responsible for any issue if the kit was used in clinical diagnostic or any other procedures.