

**MAB340Mi21**

**Monoclonal Antibody to Beta Actin (ACTB)**

**Organism Species: *Homo sapiens* (Human), *Mus musculus* (Mouse), *Rattus norvegicus* (Rat), *Cavia* (Guinea pig), *Canis familiaris*; Canine (Dog), *Sus scrofa*; Porcine (Pig), *Bos taurus*; Bovine (Cattle), *Ovis aries*; Ovine (Sheep), *Equus caballus*; Equine (Horse),**

**Chicken (*Gallus*)**

***Instruction manual***

FOR RESEARCH USE ONLY

NOT FOR USE IN CLINICAL DIAGNOSTIC PROCEDURES

---

13th Edition (Revised in Aug, 2023)

**[ PROPERTIES ]**

**Source:** Monoclonal antibody preparation

**Host:** Mouse

**Antibody isotype:** IgG2b Kappa

**Purification:** Protein A + Protein G affinity chromatography

**Clone number:** C7

**Traits:** Liquid

**Concentration:** 1mg/ml

**UOM:** 100µl

**Cross Reactivity:** Rabbit;Caprine

**Applications:** WB; IHC; ICC; IP.

**[ IMMUNOGEN ]**

**Immunogen:** Recombinant ACTB (Met1~Phe375) expressed in *E.coli*

**Accession No.:** RPB340Mi01

**[ APPLICATIONS ]**

Western blotting: 0.01-2µg/mL;

Immunohistochemistry: 5-20µg/mL;

Immunocytochemistry: 5-20µg/mL;

Optimal working dilutions must be determined by end user.

**[ FORMULATION ]**

**Form & Buffer:** Supplied as solution form in PBS, pH7.4, containing 0.02% NaN<sub>3</sub>, 50% glycerol.

**[ STORAGE AND STABILITY ]**

**Storage:** Avoid repeated freeze/thaw cycles.

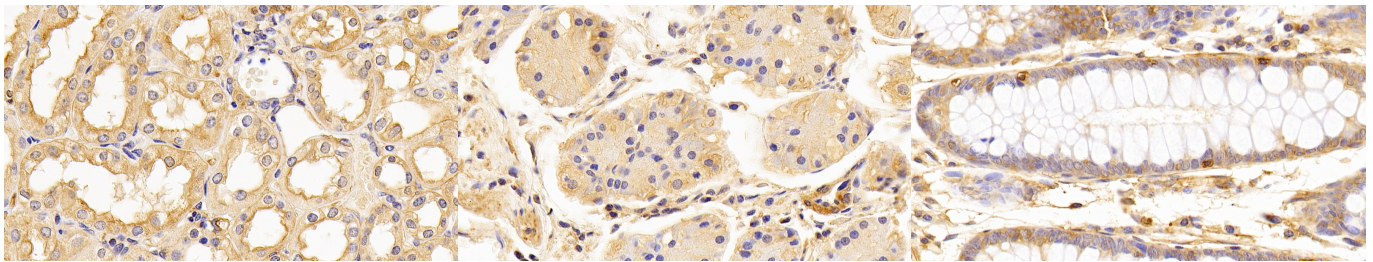
Store at 4°C for frequent use.

Aliquot and store at -20°C for 24 months.

**Stability Test:** The thermal stability is described by the loss rate. The loss rate was determined

by accelerated thermal degradation test, that is, incubate the protein at 37°C for 48h, and no obvious degradation and precipitation were observed. The loss rate is less than 5% within the expiration date under appropriate storage condition.

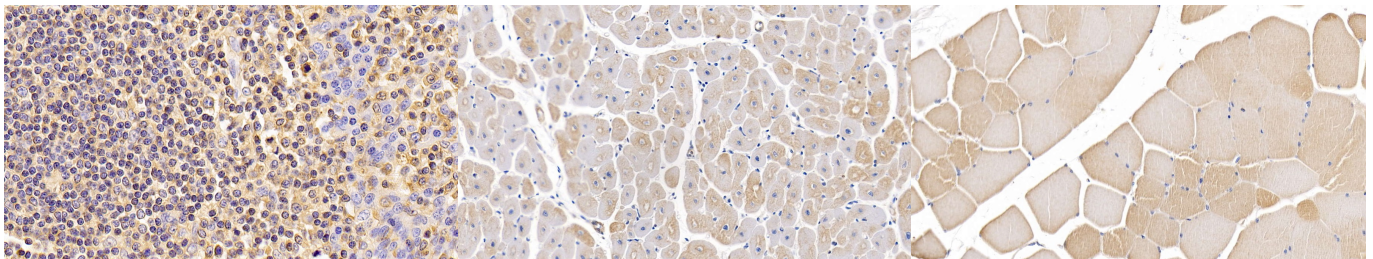
**[ IDENTIFICATION ]**



DAB staining on IHC-P; Sample: Human Kidney Tissue; Primary Ab: 10µg/ml Mouse Anti-Multi-species ACTb Antibody Second Ab: 2µg/mL HRP-Linked Caprine Anti-Mouse IgG Polyclonal Antibody (Catalog: SAA544Mu19)

DAB staining on IHC-P; Sample: Human Stomach Tissue; Primary Ab: 10µg/ml Mouse Anti-Multi-species ACTb Antibody Second Ab: 2µg/mL HRP-Linked Caprine Anti-Mouse IgG Polyclonal Antibody (Catalog: SAA544Mu19)

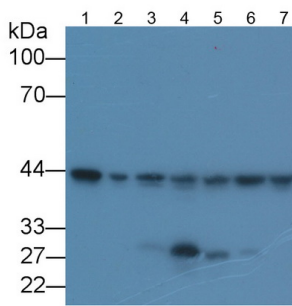
DAB staining on IHC-P; Sample: Human Colon Tissue; Primary Ab: 10µg/ml Mouse Anti-Multi-species ACTb Antibody Second Ab: 2µg/mL HRP-Linked Caprine Anti-Mouse IgG Polyclonal Antibody (Catalog: SAA544Mu19)



DAB staining on IHC-P; Sample: Human Amygdalitis Tissue; Primary Ab: 10µg/ml Mouse Anti-Multi-species ACTb Antibody Second Ab: 2µg/mL HRP-Linked Caprine Anti-Mouse IgG Polyclonal Antibody (Catalog: SAA544Mu19)

DAB staining on IHC-P; Sample: Porcine Cardiac Muscle Tissue; Primary Ab: 20µg/ml Mouse Anti-Multi-species ACTb Antibody Second Ab: 2µg/mL HRP-Linked Caprine Anti-Mouse IgG Polyclonal Antibody (Catalog: SAA544Mu19)

DAB staining on IHC-P; Sample: Porcine Skeletal muscle Tissue; Primary Ab: 20µg/ml Mouse Anti-Multi-species ACTb Antibody Second Ab: 2µg/mL HRP-Linked Caprine Anti-Mouse IgG Polyclonal Antibody (Catalog: SAA544Mu19)

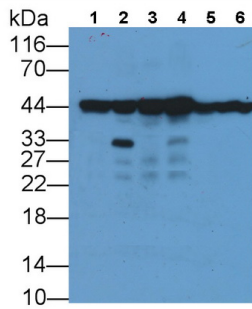


Western Blot; Sample: Lane1: Human Lung lysate; Lane2: 293T cell lysate; Lane3: Rat Liver lysate; Lane4: Rat Kidney lysate; Lane5: Porcine Liver lysate; Lane6: Porcine Kidney lysate; Lane7: Mouse Liver lysate

Primary Ab: 1µg/ml Mouse Anti-Multi-species ACTb Antibody

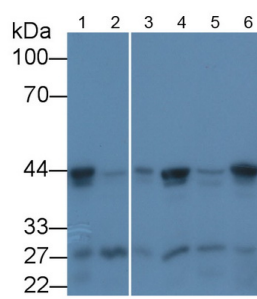
Second Ab: 0.2µg/mL HRP-Linked Caprine Anti-Mouse IgG Polyclonal Antibody

(Catalog: SAA544Mu19)



Western Blot; Sample: Lane1: Canine Cerebrum lysate; Lane2: Porcine Cerebrum lysate; Lane3: Bovine Cerebrum lysate; Lane4: Gallus Cerebrum lysate; Lane5: Equine Liver lysate; Lane6: Caprine Cerebrum lysate;

Primary Ab: 0.5µg/ml Mouse Anti-Multi-species ACTb Antibody

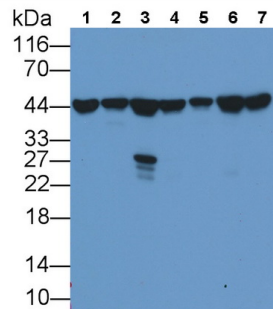


Western Blot; Sample: Lane1: Mouse Kidney lysate; Lane2: Rabbit Liver lysate; Lane3: Bovine Liver lysate; Lane4: Bovine Kidney lysate; Lane5: Canine Liver lysate; Lane6: Canine Kidney lysate

Primary Ab: 1µg/ml Mouse Anti-Multi-species ACTb Antibody

Second Ab: 0.2µg/mL HRP-Linked Caprine Anti-Mouse IgG Polyclonal Antibody

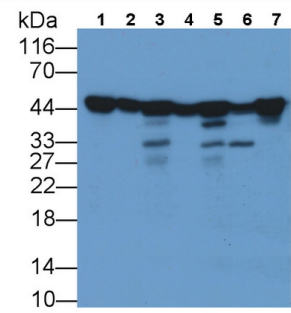
(Catalog: SAA544Mu19)



Western Blot; Sample: Lane1: DU145 cell lysate; Lane2: HL60 cell lysate; Lane3: THP1 cell lysate; Lane4: OS-RC-2 cell lysate; Lane5: HEC-1B cell lysate; Lane6: MDA-MB-435S cell lysate; Lane7: T-47D cell lysate

Primary Ab: 0.5µg/ml Mouse Anti-Multi-species ACTb Antibody

Second Ab: 0.2µg/mL HRP-Linked



Western Blot; Sample: Lane1: Human Lung lysate; Lane2: Human Placenta lysate; Lane3: Mouse Cerebrum lysate; Lane4: Mouse Liver lysate; Lane5: Rat Cerebrum lysate; Lane6: Rat Liver lysate; Lane7: Cavia Cerebrum lysate

Primary Ab: 1µg/ml Mouse Anti-Multi-species ACTb Antibody

Second Ab: 0.2µg/mL HRP-Linked Caprine Anti-Mouse IgG Polyclonal Antibody

(Catalog: SAA544Mu19)

Second Ab: 0.2µg/mL HRP-Linked Caprine Anti-Mouse IgG Polyclonal  
Caprine Anti-Mouse IgG Polyclonal Antibody  
Antibody (Catalog: SAA544Mu19)  
(Catalog: SAA544Mu19)

**[ IMPORTANT NOTE ]**

The kit is designed for research use only, we will not be responsible for any issue if the kit was used in clinical diagnostic or any other procedures.