

**MAB021Hu23**

**Monoclonal Antibody to Beta Catenin ( $\beta$ -catenin)**

**Organism Species: *Homo sapiens (Human)***

***Instruction manual***

FOR RESEARCH USE ONLY

NOT FOR USE IN CLINICAL DIAGNOSTIC PROCEDURES

---

13th Edition (Revised in Aug, 2023)

**[ PROPERTIES ]**

**Source:** Monoclonal antibody preparation

**Host:** Mouse

**Antibody isotype:** IgG2b Kappa

**Purification:** Protein A + Protein G affinity chromatography

**Clone number:** C9041

**Traits:** Liquid

**Concentration:** 1mg/mL

**UOM:** 20 $\mu$ L

**Cross Reactivity:** Mouse;Canine;Porcine;Bovine

**Applications:** WB; IHC; ICC; IP.

**[ IMMUNOGEN ]**

**Immunogen:** Recombinant  $\beta$ -catenin (Cys439~Ser675) expressed in *E.coli*

**Accession No.:** RPB021Hu01

**[ APPLICATIONS ]**

Western blotting: 0.01-2 $\mu$ g/mL;

Immunohistochemistry: 5-20 $\mu$ g/mL;

Immunocytochemistry: 5-20 $\mu$ g/mL;

Optimal working dilutions must be determined by end user.

**[ FORMULATION ]**

**Form & Buffer:** Supplied as solution form in 0.01M PBS, pH7.4, containing 0.05% Proclin-300, 50% glycerol.

**[ STORAGE AND STABILITY ]**

**Storage:** Avoid repeated freeze/thaw cycles.

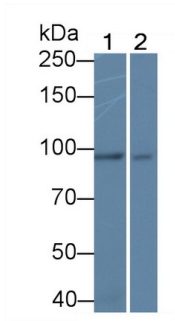
Store at 4°C for frequent use.

Aliquot and store at -20°C for 24 months.

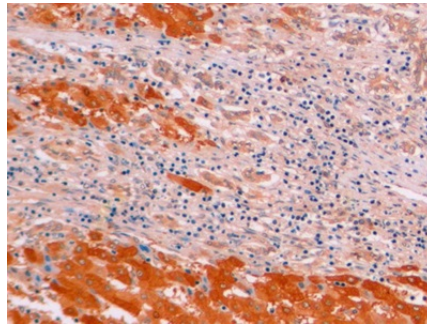
**Stability Test:** The thermal stability is described by the loss rate. The loss rate was determined

by accelerated thermal degradation test, that is, incubate the protein at 37°C for 48h, and no obvious degradation and precipitation were observed. The loss rate is less than 5% within the expiration date under appropriate storage condition.

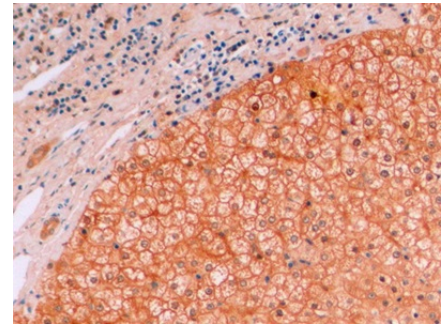
**[ IDENTIFICATION ]**



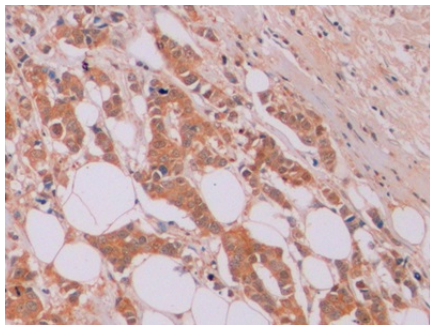
Western Blot; Sample: Lane1: Canine Cerebrum lysate; Lane2: Bovine Heart lysate Primary Ab: 2 $\mu$ g/ml Mouse Anti-Human  $\beta$ -catenin Antibody Second Ab: 0.2 $\mu$ g/mL HRP-Linked Caprine Anti-Mouse IgG Polyclonal Antibody (Catalog: SAA544Mu19)



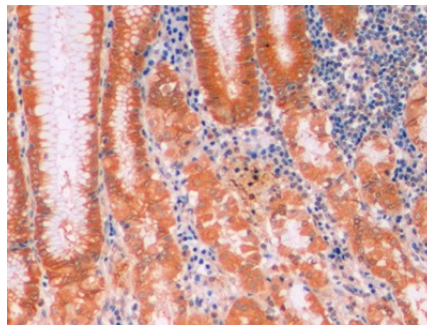
DAB staining on IHC-P; Sample: Human Liver cancer Tissue; Primary Ab: 10 $\mu$ g/ml Mouse Anti-Human  $\beta$ -catenin Antibody Second Ab: 2 $\mu$ g/mL HRP-Linked Caprine Anti-Mouse IgG Polyclonal Antibody (Catalog: SAA544Mu19)



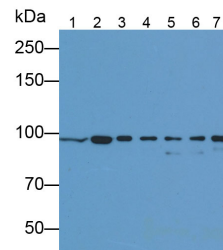
DAB staining on IHC-P; Sample: Human Liver Tissue; Primary Ab: 10 $\mu$ g/ml Mouse Anti-Human  $\beta$ -catenin Antibody Second Ab: 2 $\mu$ g/mL HRP-Linked Caprine Anti-Mouse IgG Polyclonal Antibody (Catalog: SAA544Mu19)



DAB staining on IHC-P; Sample: Human Breast cancer Tissue; Primary Ab: 10 $\mu$ g/ml Mouse Anti-Human  $\beta$ -catenin Antibody Second Ab: 2 $\mu$ g/mL HRP-Linked Caprine Anti-Mouse IgG Polyclonal Antibody (Catalog: SAA544Mu19)



DAB staining on IHC-P; Sample: Human Stomach Tissue; Primary Ab: 10 $\mu$ g/ml Mouse Anti-Human  $\beta$ -catenin Antibody Second Ab: 2 $\mu$ g/mL HRP-Linked Caprine Anti-Mouse IgG Polyclonal Antibody (Catalog: SAA544Mu19)



Western Blot; Samples: Lane1: U87MG cell lysate; Lane2: A549 cell lysate; Lane3: Porcine Cerebrum lysate; Lane4: Mouse Cerebrum lysate; Lane5: Bovine Cerebrum lysate; Lane6: Gallus Cerebrum lysate; Lane7: Canine Cerebrum lysate; Primary Ab: 0.03 $\mu$ g/ml Mouse Anti-

Human  $\beta$ -catenin Antibody  
Second Ab: 0.2 $\mu$ g/ml HRP-Linked  
Caprine Anti-Mouse IgG Polyclonal  
Antibody  
(Catalog: SAA544Mu19)

**[ IMPORTANT NOTE ]**

The kit is designed for research use only, we will not be responsible for any issue if the kit was used in clinical diagnostic or any other procedures.