

MAC102Bo21

Monoclonal Antibody to Bone Morphogenetic Protein 3 (BMP3)

Organism Species: *Bos taurus*; Bovine (Cattle)

Instruction manual

FOR RESEARCH USE ONLY

NOT FOR USE IN CLINICAL DIAGNOSTIC PROCEDURES

13th Edition (Revised in Aug, 2023)

[PROPERTIES]

Source: Monoclonal antibody preparation

Host: Mouse

Antibody isotype: IgG1 Kappa

Purification: Protein A + Protein G affinity chromatography

Clone number: D3

Traits: Liquid

Concentration: 1mg/mL

UOM: 100 μ L

Cross Reactivity: Human

Applications: WB; IHC

[IMMUNOGEN]

Immunogen: Recombinant BMP3 (Lys313~Ser471) expressed in *E.coli*

Accession No.: RPC102Bo01

[APPLICATIONS]

Western blotting: 0.01-2 μ g/mL;

Immunohistochemistry: 5-20 μ g/mL;

Optimal working dilutions must be determined by end user.

[FORMULATION]

Form & Buffer: Supplied as solution form in 0.01M PBS, pH7.4, containing 0.05% Proclin-300, 50% glycerol.

[STORAGE AND STABILITY]

Storage: Avoid repeated freeze/thaw cycles.

Store at 4°C for frequent use.

Aliquot and store at -20°C for 24 months.

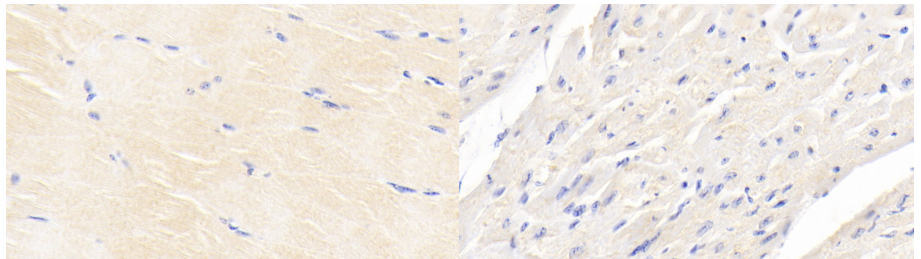
Stability Test: The thermal stability is described by the loss rate. The loss rate was determined by accelerated thermal degradation test, that is, incubate the protein at 37°C for 48h, and no

obvious degradation and precipitation were observed. The loss rate is less than 5% within the expiration date under appropriate storage condition.

[IDENTIFICATION]

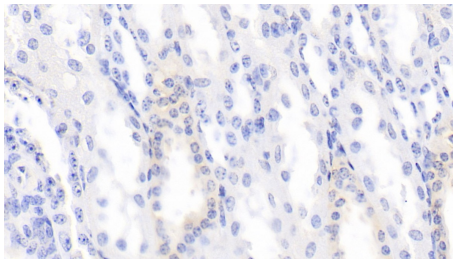


Western Blot; Sample: Hela cell lysate
 Primary Ab: 2µg/ml Mouse Anti-Bovine BMP3 Antibody
 Second Ab: 0.2µg/mL HRP-Linked Rabbit Anti-Mouse IgG Polyclonal Antibody (Catalog: SAA544Mu09)

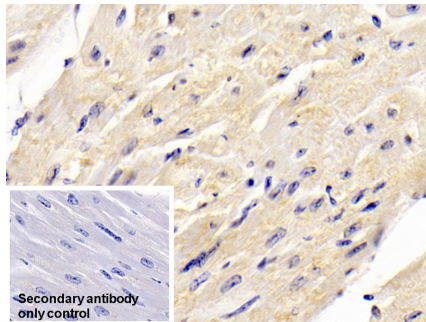


DAB staining on IHC-P; Sample: Bovine Skeletal muscle Tissue; Primary Ab: 20µg/ml Mouse Anti-Bovine BMP3 Antibody
 Second Ab: 2µg/mL HRP-Linked Caprine Anti-Mouse IgG Polyclonal Antibody (Catalog: SAA544Mu19)

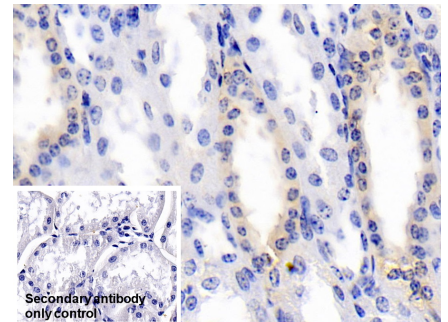
DAB staining on IHC-P; Sample: Bovine Cardiac Muscle Tissue; Primary Ab: 20µg/ml Mouse Anti-Bovine BMP3 Antibody
 Second Ab: 2µg/mL HRP-Linked Caprine Anti-Mouse IgG Polyclonal Antibody (Catalog: SAA544Mu19)



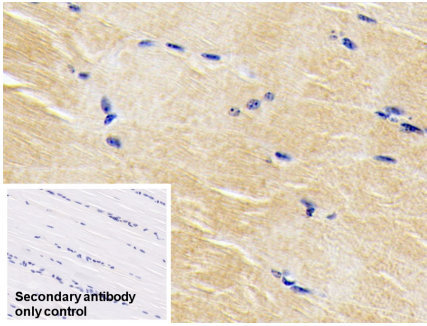
DAB staining on IHC-P; Sample: Bovine Kidney Tissue; Primary Ab: 20µg/ml Mouse Anti-Bovine BMP3 Antibody
 Second Ab: 2µg/mL HRP-Linked Caprine Anti-Mouse IgG Polyclonal Antibody (Catalog: SAA544Mu19)



DAB staining on IHC-P; Sample: Bovine Cardiac Muscle Tissue; Primary Ab: 20µg/ml Mouse Anti-Bovine BMP3 Antibody
 Control: Used PBS instead of primary antibody
 Second Ab: 2µg/ml HRP-Linked Caprine Anti-Mouse IgG Polyclonal Antibody (Catalog: SAA544Mu19)



DAB staining on IHC-P; Sample: Bovine Kidney Tissue; Primary Ab: 20µg/ml Mouse Anti-Bovine BMP3 Antibody
 Control: Used PBS instead of primary antibody
 Second Ab: 2µg/ml HRP-Linked Caprine Anti-Mouse IgG Polyclonal Antibody (Catalog: SAA544Mu19)



DAB staining on IHC-P;

Western Blot; Sample: Hela cell lysate

Sample: Bovine Skeletal muscle Tissue Primary Ab: 2 μ g/ml Mouse Anti-Bovine

Primary Ab: 20 μ g/ml Mouse Anti-

BMP3 Antibody

Bovine BMP3 Antibody

Second Ab: 0.2 μ g/mL HRP-Linked

Control: Used PBS instead of primary antibody

Rabbit Anti-Mouse IgG Polyclonal Antibody

Second Ab: 2 μ g/ml HRP-Linked

(Catalog: SAA544Mu09)

Caprine Anti-Mouse IgG Polyclonal

Antibody

(Catalog: SAA544Mu19)

[**IMPORTANT NOTE**]

The kit is designed for research use only, we will not be responsible for any issue if the kit was used in clinical diagnostic or any other procedures.