

**MAC978Ra21**  
**Monoclonal Antibody**  
**To Carcinoembryonic Antigen Related Cell Adhesion Molecule 3 (CEACAM3)**  
**Organism Species: Rattus norvegicus (Rat)**  
***Instruction manual***

FOR IN VITRO USE AND RESEARCH USE ONLY  
NOT FOR USE IN CLINICAL DIAGNOSTIC PROCEDURES

9th Edition (Revised in Jul, 2013)

**[ PRODUCT INFORMATION ]**

**Immunogen:** CEACAM3, Rat

**Clonality:** Monoclonal

**Clone number:** G4

**Host:** Mouse

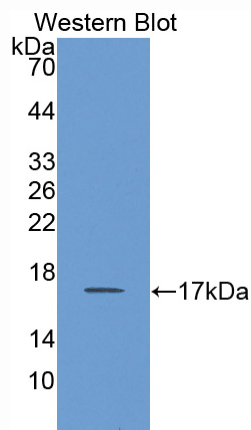
**Immunoglobulin Type:** IgG

**Purification:** Affinity Chromatography.

**Applications:** WB, ICC, IHC-P, IHC-F, ELISA

**Concentration:** 500µg/mL

**UOM:** 200µg



*Sample: Recombinant CEACAM3, Rat*

**[ IMMUNOGEN INFORMATION ]**

**Immunogen:** Recombinant CEACAM3 (Ser273~Leu416) expressed in *E. coli*.

**Accession No.:** RPC978Ra01

**Sequence:** The target protein is fused with N-terminal His-Tag and its sequence is listed below.

MGHHHHHSGSEF- SAQLTVES APTSVAEGAS VLLLVHNLPE NLRAIFWYKG VILFKDLEVA  
RYVIGTNSSV LGPAHSGRET MYSNGSLLLQ NVTRNDAGFY TLRTLSTD LK AKVVHVQLQV  
NTSSCCDPLT PALLTIDPVP RHAAGGESVL LQVRNL

## **[ ANTIBODY SPECIFICITY ]**

The antibody is a mouse monoclonal antibody raised against CEACAM3. It has been selected for its ability to recognize CEACAM3 in immunohistochemical staining and western blotting.

## **[ APPLICATIONS ]**

Western blotting: 1:100-400

Immunocytochemistry in formalin fixed cells: 1:100-500

Immunohistochemistry in formalin fixed frozen section: 1:100-500

Immunohistochemistry in paraffin section: 1:50-200

Enzyme-linked Immunosorbent Assay: 1:100-200

Optimal working dilutions must be determined by end user.

## **[ CONTENTS ]**

**Form & Buffer:** Supplied as solution form in PBS, pH7.4, containing 0.02% NaN<sub>3</sub>, 50% glycerol.

## **[ STORAGE ]**

Store at 4°C for frequent use. Stored at -20°C to -80°C in a manual defrost freezer for one year without detectable loss of activity. Avoid repeated freeze-thaw cycles.