

MAC340Bo22

Monoclonal Antibody to Caspase 6 (CASP6)

Organism Species: *Bos taurus*; Bovine (Cattle)

Instruction manual

FOR RESEARCH USE ONLY

NOT FOR USE IN CLINICAL DIAGNOSTIC PROCEDURES

13th Edition (Revised in Aug, 2023)

[PROPERTIES]

Source: Monoclonal antibody preparation

Host: Mouse

Antibody isotype: IgG1 Kappa

Purification: Protein A + Protein G affinity chromatography

Clone number: C1

Traits: Liquid

Concentration: 1mg/mL

UOM: 100µL

Cross Reactivity: N/A

Applications: WB; IHC

[IMMUNOGEN]

Immunogen: Recombinant CASP6 (Ala194~Lys293) expressed in *E.coli*

Accession No.: RPC340Bo02

[APPLICATIONS]

Western blotting: 0.01-3µg/mL;

Immunohistochemistry: 5-30µg/mL;

Optimal working dilutions must be determined by end user.

[FORMULATION]

Form & Buffer: Supplied as solution form in 0.01M PBS, pH7.4, containing 0.05% Proclin-300, 50% glycerol.

[STORAGE AND STABILITY]

Storage: Avoid repeated freeze/thaw cycles.

Store at 4°C for frequent use.

Aliquot and store at -20°C for 24 months.

Stability Test: The thermal stability is described by the loss rate. The loss rate was determined by accelerated thermal degradation test, that is, incubate the protein at 37°C for 48h, and no

obvious degradation and precipitation were observed. The loss rate is less than 5% within the expiration date under appropriate storage condition.

[IDENTIFICATION]

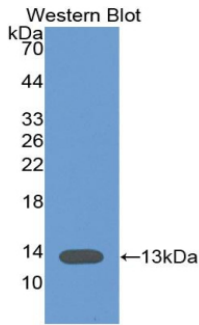
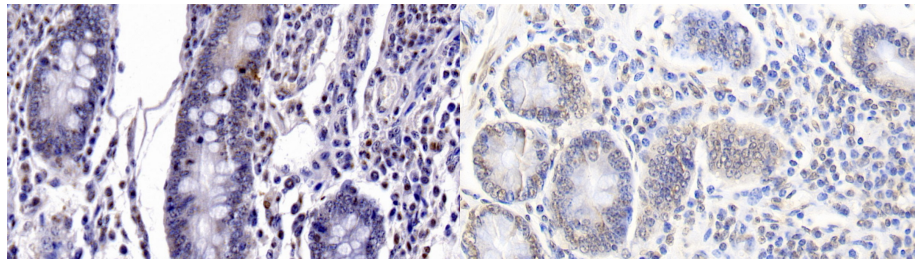
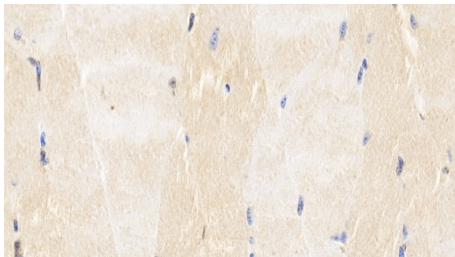


Figure. Western Blot; Sample: Recombinant CASP6, Bovine.

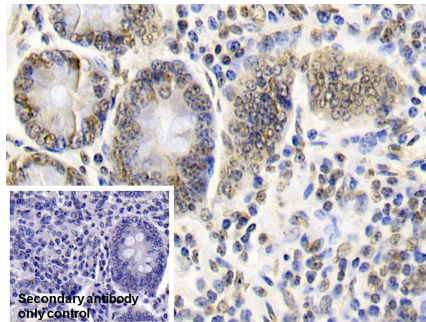


DAB staining on IHC-P; Samples: Bovine Small intestine Tissue; Primary Ab: 30ug/ml Mouse Anti-Bovine CASP6 Antibody Second Ab: 2µg/mL HRP-Linked Caprine Anti-Mouse IgG Polyclonal Antibody (Catalog: SAA544Mu19)

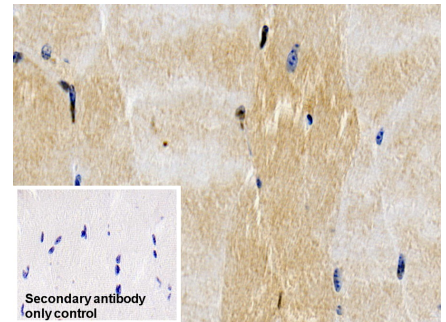
DAB staining on IHC-P; Sample: Bovine Colon Tissue; Primary Ab: 20µg/ml Mouse Anti-Bovine CASP6 Antibody Second Ab: 2µg/mL HRP-Linked Caprine Anti-Mouse IgG Polyclonal Antibody (Catalog: SAA544Mu19)



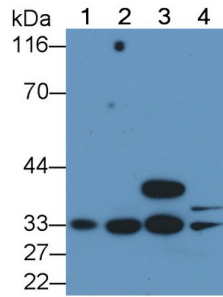
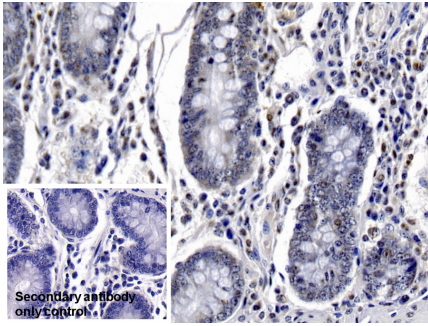
DAB staining on IHC-P; Sample: Bovine Skeletal muscle Tissue; Primary Ab: 20µg/ml Mouse Anti-Bovine CASP6 Antibody Second Ab: 2µg/mL HRP-Linked Caprine Anti-Mouse IgG Polyclonal Antibody (Catalog: SAA544Mu19)



DAB staining on IHC-P; Sample: Bovine Colon Tissue Primary Ab: 20µg/ml Mouse Anti-Bovine CASP6 Antibody Control: Used PBS instead of primary antibody Second Ab: 2µg/ml HRP-Linked Caprine Anti-Mouse IgG Polyclonal Antibody (Catalog: SAA544Mu19)



DAB staining on IHC-P; Sample: Bovine Skeletal muscle Tissue Primary Ab: 20µg/ml Mouse Anti-Bovine CASP6 Antibody Control: Used PBS instead of primary antibody Second Ab: 2µg/ml HRP-Linked Caprine Anti-Mouse IgG Polyclonal Antibody (Catalog: SAA544Mu19)



<p>DAB staining on IHC-P; Sample: Bovine Small intestine Tissue Primary Ab: 20µg/ml Mouse Anti-Bovine CASP6 Antibody Control: Used PBS instead of primary antibody Second Ab: 2µg/ml HRP-Linked Caprine Anti-Mouse IgG Polyclonal Antibody (Catalog: SAA544Mu19)</p>	<p>Western Blot; Sample: Lane1: Bovine Kidney lysate; Lane2: Bovine Cerebrum lysate; Lane3: Bovine Colon lysate; Lane4: Bovine Testis lysate Primary Ab: 1µg/ml Mouse Anti-Bovine CASP6 Antibody Second Ab: 0.2µg/mL HRP-Linked Caprine Anti-Mouse IgG Polyclonal Antibody (Catalog: SAA544Mu19)</p>
---	---

[IMPORTANT NOTE]

The kit is designed for research use only, we will not be responsible for any issue if the kit was used in clinical diagnostic or any other procedures.