

**MAA979Mu21**

**Monoclonal Antibody to Cyclophilin A (CYPA)**

**Organism Species: *Mus musculus* (Mouse)**

***Instruction manual***

FOR RESEARCH USE ONLY

NOT FOR USE IN CLINICAL DIAGNOSTIC PROCEDURES

---

13th Edition (Revised in Aug, 2023)

**[ PROPERTIES ]**

**Source:** Monoclonal antibody preparation

**Host:** Mouse

**Antibody isotype:** IgG1 Kappa

**Purification:** Protein A + Protein G affinity chromatography

**Clone number:** D4

**Traits:** Liquid

**Concentration:** 1mg/mL

**UOM:** 10 $\mu$ L

**Cross Reactivity:** Human;Rat;Porcine;Bovine

**Applications:** WB; IHC; ICC; IP.

**[ IMMUNOGEN ]**

**Immunogen:** Recombinant CYPA (Val2~Leu164) expressed in *E.coli*

**Accession No.:** RPA979Mu01

**[ APPLICATIONS ]**

Western blotting: 0.01-2 $\mu$ g/mL

Immunohistochemistry: 5-20 $\mu$ g/mL

Immunocytochemistry: 5-20 $\mu$ g/mL

Optimal working dilutions must be determined by end user.

**[ FORMULATION ]**

**Form & Buffer:** Supplied as solution form in PBS, pH7.4, containing 0.02% NaN<sub>3</sub>, 50% glycerol.

**[ STORAGE AND STABILITY ]**

**Storage:** Avoid repeated freeze/thaw cycles.

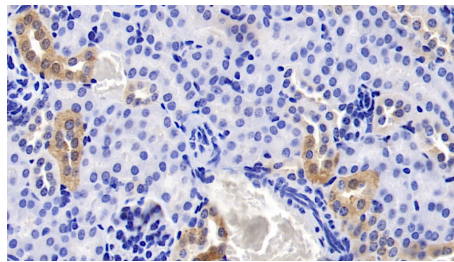
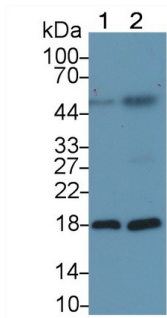
Store at 4°C for frequent use.

Aliquot and store at -20°C for 24 months.

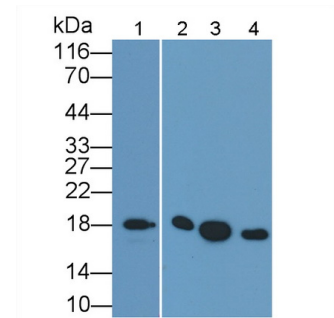
**Stability Test:** The thermal stability is described by the loss rate. The loss rate was determined

by accelerated thermal degradation test, that is, incubate the protein at 37°C for 48h, and no obvious degradation and precipitation were observed. The loss rate is less than 5% within the expiration date under appropriate storage condition.

**[ IDENTIFICATION ]**



DAB staining on IHC-P; Sample: Mouse



Western Blot; Sample: Lane1: HepG2 cell lysate; Lane2: Porcine Cerebrum lysate; Lane3: Rat Cerebrum lysate; Lane4: Bovine Cerebrum lysate  
 Primary Ab: 0.01?g/ml Mouse Anti-Mouse CYPA Antibody  
 Second Ab: 0.2µg/mL HRP-Linked Caprine Anti-Mouse IgG Polyclonal Antibody  
 (Catalog: SAA544Mu19)

Western Blot; Sample: Lane1: Mouse Liver lysate; Lane2: Mouse Testis lysate  
 Primary Ab: 2µg/mL Mouse Anti-Mouse CYPA Antibody  
 Second Ab: 0.2µg/mL HRP-Linked Caprine Anti-Mouse IgG Polyclonal Antibody  
 (Catalog: SAA544Mu19)

Kidney Tissue; Primary Ab: 20µg/ml Mouse Anti-Mouse CYPA Antibody  
 Second Ab: 2µg/mL HRP-Linked Caprine Anti-Mouse IgG Polyclonal Antibody (Catalog: SAA544Mu19)

**[ IMPORTANT NOTE ]**

The kit is designed for research use only, we will not be responsible for any issue if the kit was used in clinical diagnostic or any other procedures.