

MAA979Mu22

Monoclonal Antibody to Cyclophilin A (CYPA)

Organism Species: *Mus musculus* (Mouse)

Instruction manual

FOR RESEARCH USE ONLY

NOT FOR USE IN CLINICAL DIAGNOSTIC PROCEDURES

13th Edition (Revised in Aug, 2023)

[PROPERTIES]

Source: Monoclonal antibody preparation

Host: Mouse

Antibody isotype: IgG2a Kappa

Purification: Protein A + Protein G affinity chromatography

Clone number: C1

Traits: Liquid

Concentration: 1mg/ml

UOM: 100µl

Cross Reactivity: Human;Rat;Porcine

Applications: WB; IHC

[IMMUNOGEN]

Immunogen: Recombinant CYPA (Val2~Leu164) expressed in *E.coli*

Accession No.: RPA979Mu01

[APPLICATIONS]

Western blotting: 0.01-2µg/mL

Immunohistochemistry: 5-20µg/mL

Optimal working dilutions must be determined by end user.

[FORMULATION]

Form & Buffer: Supplied as solution form in 0.01M PBS, pH7.4, containing 0.05% Proclin-300, 50% glycerol.

[STORAGE AND STABILITY]

Storage: Avoid repeated freeze/thaw cycles.

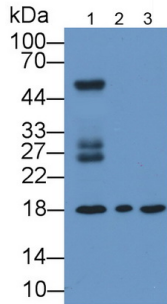
Store at 4°C for frequent use.

Aliquot and store at -20°C for 24 months.

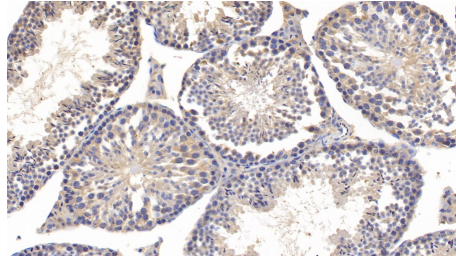
Stability Test: The thermal stability is described by the loss rate. The loss rate was determined by accelerated thermal degradation test, that is, incubate the protein at 37°C for 48h, and no

obvious degradation and precipitation were observed. The loss rate is less than 5% within the expiration date under appropriate storage condition.

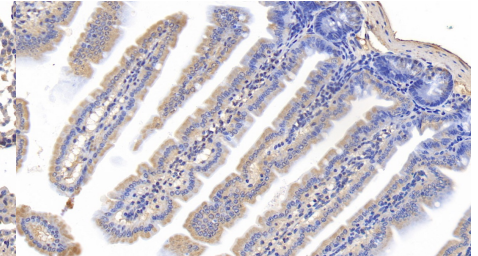
[IDENTIFICATION]



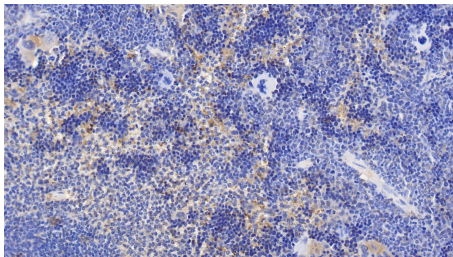
Western Blot; Sample: Lane1: Mouse Testis lysate; Lane2: HepG2 cell lysate; Lane3: Jurkat cell lysate Primary Ab: 2µg/ml Mouse Anti-Multi-species CYPA Antibody Second Ab: 0.2µg/mL HRP-Linked Caprine Anti-Mouse IgG Polyclonal Antibody (Catalog: SAA544Mu19)



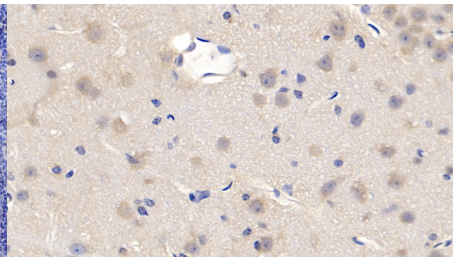
DAB staining on IHC-P; Sample: Mouse Testis Tissue; Primary Ab: 10µg/ml Mouse Anti-Mouse CYPA Antibody Second Ab: 2µg/mL HRP-Linked Caprine Anti-Mouse IgG Polyclonal Antibody (Catalog: SAA544Mu19)



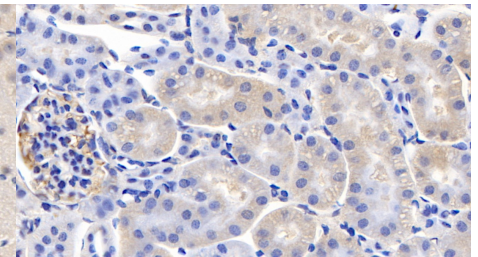
DAB staining on IHC-P; Sample: Mouse Colon Tissue; Primary Ab: 10µg/ml Mouse Anti-Mouse CYPA Antibody Second Ab: 2µg/mL HRP-Linked Caprine Anti-Mouse IgG Polyclonal Antibody (Catalog: SAA544Mu19)



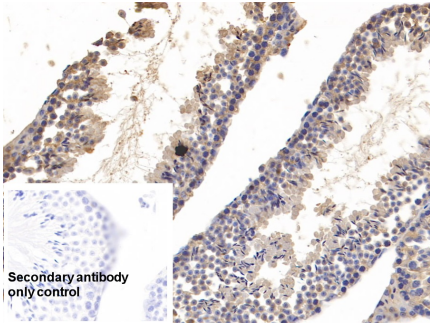
DAB staining on IHC-P; Sample: Mouse Spleen Tissue; Primary Ab: 10µg/ml Mouse Anti-Mouse CYPA Antibody Second Ab: 2µg/mL HRP-Linked Caprine Anti-Mouse IgG Polyclonal Antibody (Catalog: SAA544Mu19)



DAB staining on IHC-P; Sample: Mouse Cerebrum Tissue; Primary Ab: 10µg/ml Mouse Anti-Mouse CYPA Antibody Second Ab: 2µg/mL HRP-Linked Caprine Anti-Mouse IgG Polyclonal Antibody (Catalog: SAA544Mu19)



DAB staining on IHC-P; Sample: Mouse Kidney Tissue; Primary Ab: 10µg/ml Mouse Anti-Mouse CYPA Antibody Second Ab: 2µg/mL HRP-Linked Caprine Anti-Mouse IgG Polyclonal Antibody (Catalog: SAA544Mu19)



DAB staining on IHC-P;

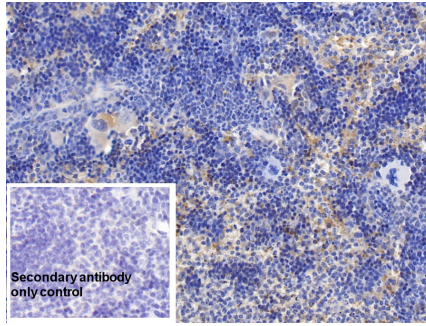
Sample: Mouse Testis Tissue

Primary Ab: 10µg/ml Mouse Anti-Mouse CYP4A Antibody

Control: Used PBS instead of primary antibody

Second Ab: 2µg/ml HRP-Linked Caprine Anti-Mouse IgG Polyclonal Antibody

(Catalog: SAA544Mu19)



DAB staining on IHC-P;

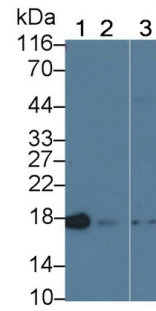
Sample: Mouse Spleen Tissue

Primary Ab: 10µg/ml Mouse Anti-Mouse CYP4A Antibody

Control: Used PBS instead of primary antibody

Second Ab: 2µg/ml HRP-Linked Caprine Anti-Mouse IgG Polyclonal Antibody

(Catalog: SAA544Mu19)



Western Blot; Sample: Lane1: Porcine Cerebrum lysate; Lane2: Porcine Liver lysate; Lane3: Rat Testis lysate

Primary Ab: 2µg/ml Mouse Anti-Multi-species CYP4A Antibody

Second Ab: 0.2µg/mL HRP-Linked Caprine Anti-Mouse IgG Polyclonal Antibody

(Catalog: SAA544Mu19)

[IMPORTANT NOTE]

The kit is designed for research use only, we will not be responsible for any issue if the kit was used in clinical diagnostic or any other procedures.